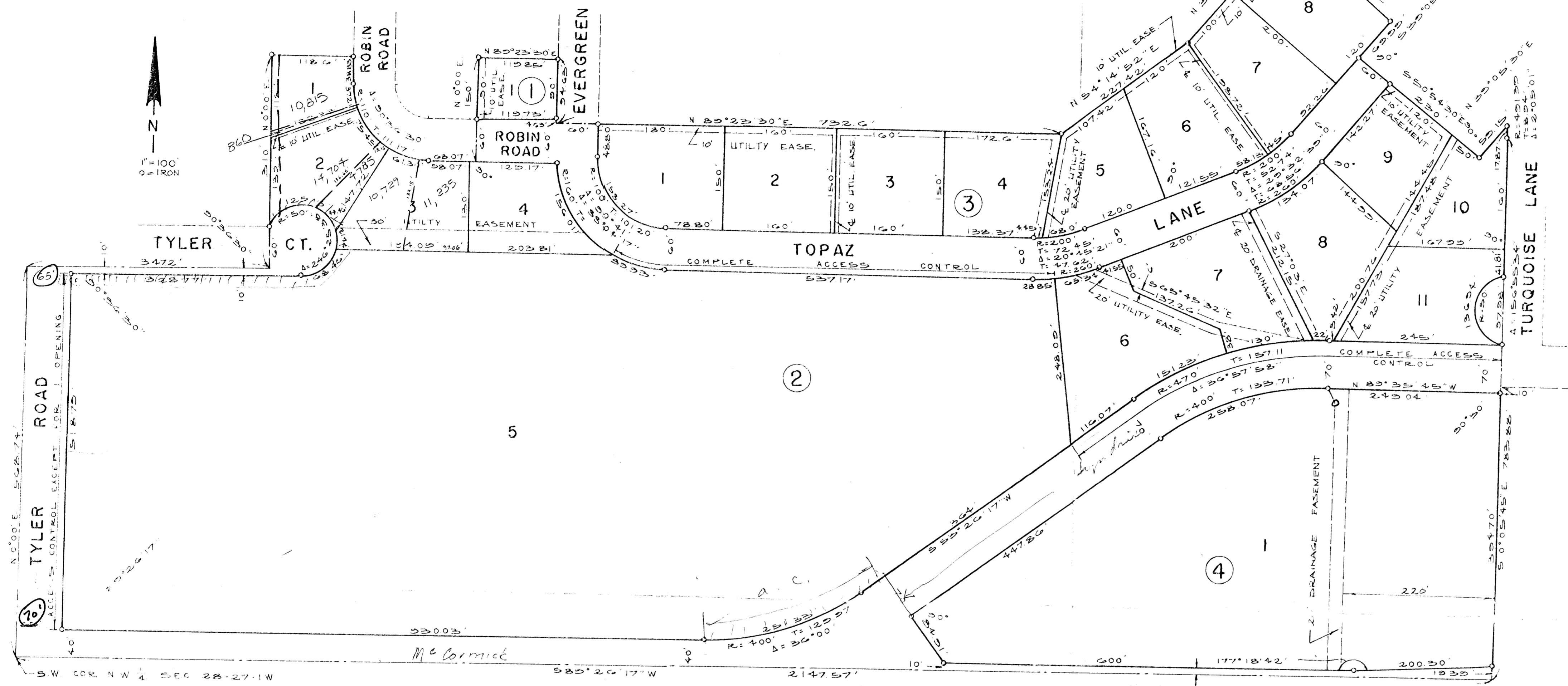


# CARRIAGE HOUSE PLAZA SECOND ADDITION

## WICHITA, SEDGWICK COUNTY, KANSAS



State of Kansas, County of Sedgwick, SS.

I, Kenneth O. Taylor, Civil Engineer in said State and County, do hereby certify that I have surveyed and platted "CARRIAGE HOUSE PLAZA SECOND ADDITION", Wichita, Sedgwick County, Kansas and that the accompanying plat is a true and correct exhibit of said survey described as follows: Part of the NW 1/4 of Section 28, T27S, R1W of the 6th P.M., Sedgwick County, Kansas and part of Floyd Bailey Fourth Addition, Wichita, Sedgwick County, Kansas, part of Floyd Bailey Third Addition, Sedgwick County, Kansas, part of Floyd Bailey Fifth Addition, Wichita, Sedgwick County, Kansas and part of Carriage House Plaza, Wichita, Sedgwick County, Kansas, described as follows: Beginning at the SW corner of said NW 1/4; thence north on the west line of said NW 1/4, 569.74 feet to the SW corner of said Floyd Bailey Fourth Addition; thence east 347.2 feet; thence north 310 feet to the NW corner of Lot 1, Block 1 in said Floyd Bailey Fifth Addition; thence east 118.6 feet to the easterly line of Lots 1 and 2, Block 1 and along the north line of Lots 3 and 4, Block 1, 280.96 feet to the west line of Lot 12, Block 2, extended south, all in said Floyd Bailey Fifth Addition; thence north 150 feet to the NW corner of Lot 12, Block 2 in said Floyd Bailey Fifth Addition; thence east 119.85 feet to the NE corner of said Lot 12, Block 2; thence south at an interior angle of 89°19', 94.63 feet; thence east 60 feet to the SW corner of Lot 1, Block D in Floyd Bailey Third Addition, Sedgwick County, Kansas; thence east on the south line of Lots 1, 2, 3, 4 and 5, Block D in said Floyd Bailey Third Addition, 672.6 feet to the NE corner of Lot 17 in said Block D and also to the NE corner of Lot 1, Block 3 in said Carriage House Plaza; thence north-easterly along the north line (rear line) of Lots 15 and 14 in said Block D in said Floyd Bailey Third Addition, 227.42 feet to the NE corner of said Lot 14; thence northeasterly 220 feet to the NE corner of Lot 12 in said Block D; thence southeasterly 200 feet to the SE corner of said Lot 12 in said Block D; thence southwesterly along the south line of said Lot 12, 69.99 feet; thence southeasterly 60 feet to the NW corner of Lot 5, Block E in said Floyd Bailey Third Addition; thence southeasterly 170 feet to the SW corner of said Lot 5, Block E; thence northeasterly 59.15 feet, more or less, to the SE corner of said Lot 5, Block E; thence south along the east line of Lot 2, Block 2 in said Carriage House Plaza and said east line extended south 377.66 feet to the NE corner of Lot 3, Block 1 in said Carriage House Plaza; thence south along the east line of Lots 3 and 1, Block 1 in said Carriage House Plaza and along said east line extended south, 424.09 feet to the south line of said NW 1/4; thence west 2147.57 feet to the point of beginning.

All lots, blocks and streets lying within the bounds of the above described property being vacated and replatted by virtue of K.S.A. 1970 Supp. 12-512(b).

Kenneth O. Taylor  
Civil Engineer

Know all men by these presents that we, Bud White and Joyce B. White, husband and wife and Bill E. Mesker and Doris Jean Mesker, husband and wife, have caused the land described in the Civil Engineer's certificate to be platted into lots, blocks and streets to be known as "CARRIAGE HOUSE PLAZA SECOND ADDITION", Wichita, Sedgwick County, Kansas. Utility easements as indicated on the plat are hereby granted for the construction and maintenance of all public utilities. Drainage easements as indicated on the plat are hereby granted for drainage purposes. The streets are hereby dedicated to and for the use of the public.

All abutter's rights of access to or from Tyler Road, over and across the west line of Lot 5, Block 2 are hereby granted to the City of Wichita, provided, however, that Lot 5, Block 2 shall have access to Tyler Road at one location to be designated by the City Engineer of the City of Wichita, Kansas. All abutter's rights of access to or from Tyler Court, over and across the south line of Lot 2, Block 2, the west line of Lot 3, Block 2 and the north line of Lot 5, Block 2, are hereby granted to the City of Wichita. All abutter's rights of access to or from Topaz Lane, over and across the north line of Lot 5, Block 2, are hereby granted to the City of Wichita. All abutter's rights of access to or from \_\_\_\_\_, over and across the south line of Lots 6, 7, 8 and 11, Block 2, are hereby granted to the City of Wichita.

\_\_\_\_\_  
Bud White  
\_\_\_\_\_  
Joyce B. White

\_\_\_\_\_  
Bill E. Mesker  
\_\_\_\_\_  
Doris Jean Mesker

State of Kansas, County of Sedgwick, SS.

The foregoing instrument was acknowledged before me this \_\_\_\_\_ day of \_\_\_\_\_, 19\_\_\_\_, by Bud White and Joyce B. White, husband and wife and Bill E. Mesker and Doris Jean Mesker, husband and wife.

\_\_\_\_\_  
Notary Public

This plat of "CARRIAGE HOUSE PLAZA SECOND ADDITION", Wichita, Sedgwick County, Kansas has been submitted to and approved by the Wichita-Sedgwick County Metropolitan Area Planning Commission, Wichita, Kansas.

Dated this \_\_\_\_\_ day of \_\_\_\_\_, 19\_\_\_\_.

Wichita-Sedgwick County Metropolitan Area Planning Commission

By \_\_\_\_\_, Chairman  
Harlan R. Kamen

\_\_\_\_\_, Secretary  
Robert A. Lakin

This plat approved and all dedications shown hereon accepted by the Board of City Commissioners of the City of Wichita, Kansas, this \_\_\_\_\_ day of \_\_\_\_\_, 19\_\_\_\_.

\_\_\_\_\_  
Connie A. Peters, Mayor

\_\_\_\_\_  
Donald C. Gisick, City Clerk

This plat approved and all dedications shown hereon accepted by the Board of County Commissioners of Sedgwick County, Kansas, this \_\_\_\_\_ day of \_\_\_\_\_, 19\_\_\_\_.

\_\_\_\_\_  
Earl E. Rush, Chairman

\_\_\_\_\_  
Tom Scott, Commissioner

ATTEST:  
\_\_\_\_\_  
John Hale, Commissioner

\_\_\_\_\_  
George Pierce, County Clerk

Entered on transfer record this \_\_\_\_\_ day of \_\_\_\_\_, 19\_\_\_\_.

\_\_\_\_\_  
George Pierce, County Clerk

State of Kansas, County of Sedgwick, SS.

This is to certify that this instrument was filed for record in the Register of Deeds Office, at \_\_\_\_\_ o'clock \_\_\_\_\_, on the \_\_\_\_\_ day of \_\_\_\_\_, 19\_\_\_\_.

\_\_\_\_\_  
Datto F. McCart, Register of Deeds

\_\_\_\_\_  
Pearl B. Gilbert, Deputy