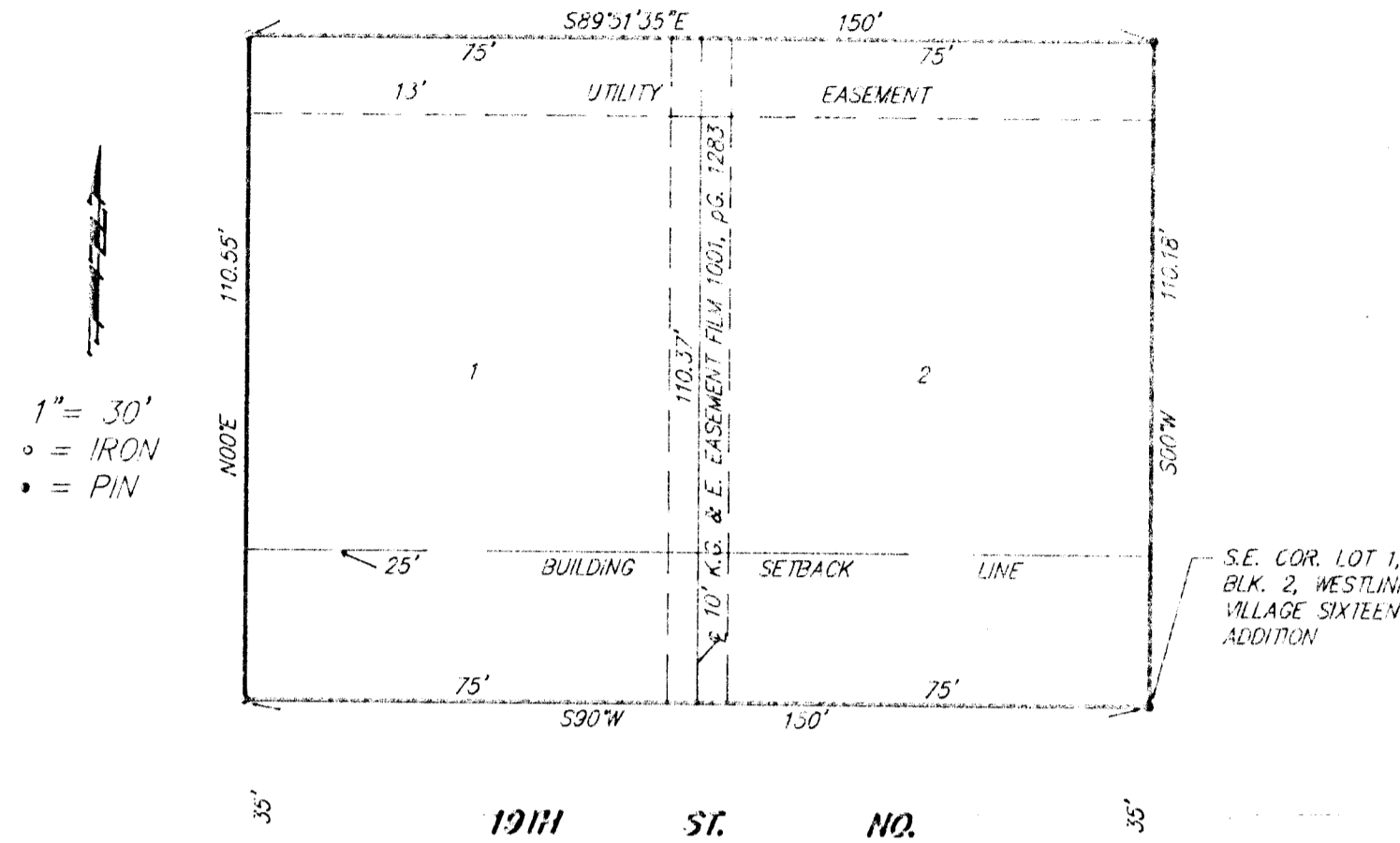


CARSON ADDITION

WICHITA, SEDGWICK COUNTY, KANSAS

State of Kansas) ss We, Baughman Company, P.A., Surveyors in
Sedgwick County) do hereby certify that we have surveyed
and platted "Carson Addition," Wichita, Sedgwick County, Kansas, and
that the accompanying plat is a true and correct exhibit of the prop-
erty surveyed, described as and being a replat of the east 2 feet of
Lot 14, and the west half of vacated street adjacent on the east,
Block 1, Westlink Village Sixteenth Addition, Wichita, Sedgwick County,
Kansas, and Lot 1, and the east half of vacated street on the west,
Block 2, Westlink Village Sixteenth Addition, Wichita, Sedgwick County,
Kansas.

Existing public easements and building setbacks being vacated
by virtue of KSA 12-512 (b). All being situated in the N.W. 1/4 of
Sec. 9, Twp. 27-S, R-1-W of the 6th P.M., Sedgwick County, Kansas.



12-17-90

Date

Baughman Company, P.A.



Gregory F. Sevens Surveyor
Gregory F. Sevens

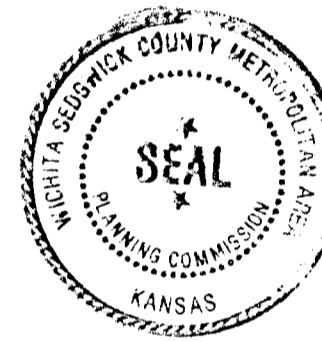
Know all men by these presents that we,
the undersigned, have caused the land described in the surveyors
certificate to be platted into Lots to be known as "Carson Addition,"
Wichita, Sedgwick County, Kansas. The easement is hereby granted
as indicated for the construction and maintenance of all public util-
ities.

Carson & Company, Inc.

Garry O. Carson President
Garry O. Carson

This plat of "Carson Addition," Wichita,
Sedgwick County, Kansas, has been submitted to and approved by the
Wichita, Sedgwick County Metropolitan Area Planning Commission,
Wichita, Kansas.

Dated this _____ day of _____, 1991.



George Sherman Chairman
George Sherman

Marvin S. Krout Secretary
Marvin S. Krout

This plat approved and all dedications shown
hereon accepted by the City Council of the City Of Wichita, Kansas,
this _____ day of _____, 1991.

Bob Knight Mayor
Bob Knight

Pat Burnett City Clerk
Pat Burnett

State of Kansas) ss The foregoing instrument was acknowledged
Sedgwick County) before me this _____ day of _____, 1991, by
Garry O. Carson, President of Carson & Company on behalf of the
corporation.

Mildred E. Franz Notary Public
Mildred E. Franz

My App't Exp. 2-3-91

Entered on transfer record this _____ day
of _____, 1991.

Don Wright County Clerk
Don Wright

State of Kansas) ss This is to certify that this plat has been
Sedgwick County) filed for record in the office of the Register of Deeds, this _____ day
of _____, 1991, at _____ o'clock _____ M.; and is duly
recorded.

Pat Kettler Register of Deeds
Pat Kettler

Ed Resa Deputy
Ed Resa