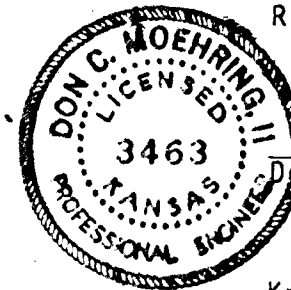
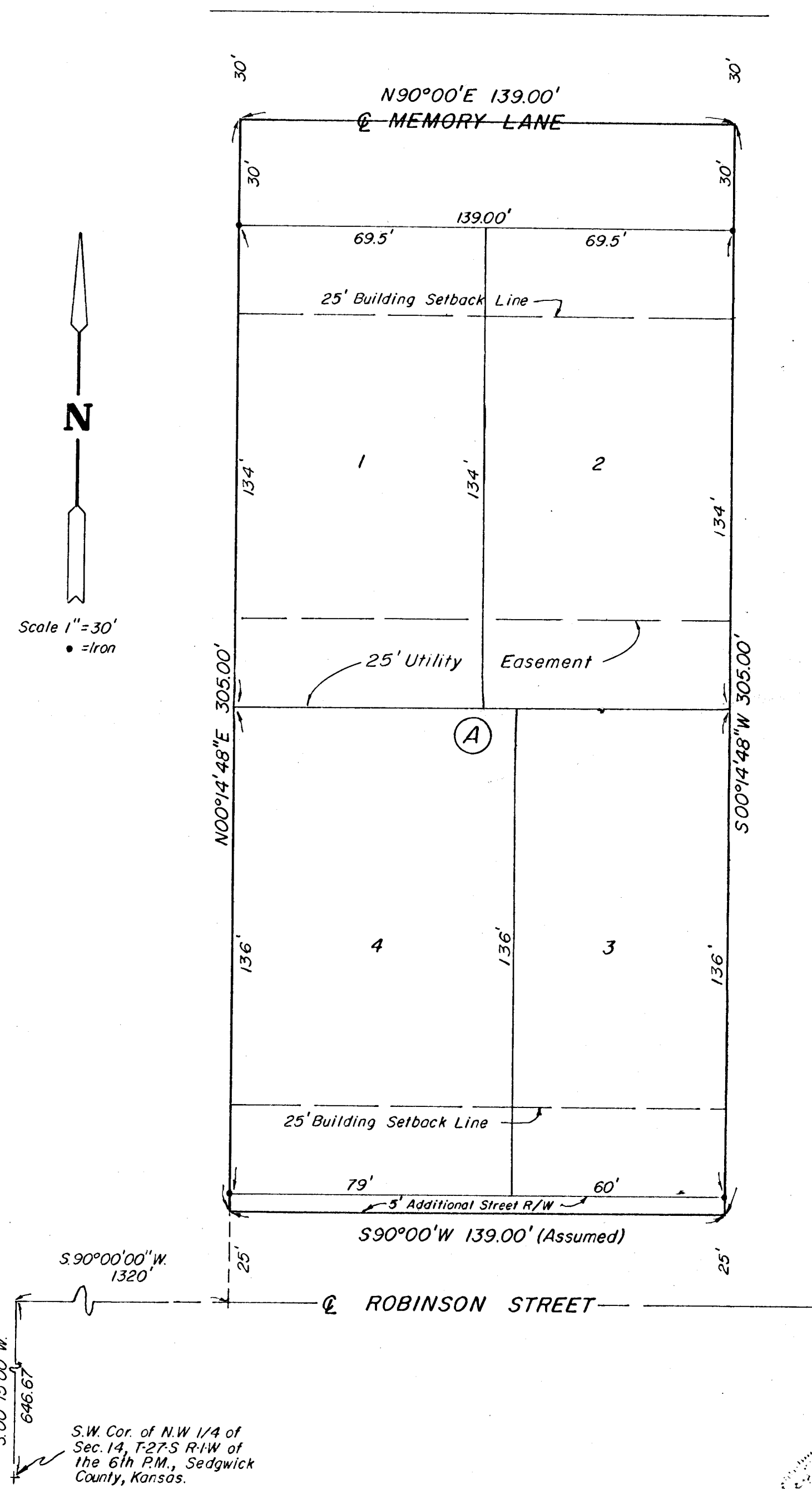


**BOB CARTER ADDITION  
TO WICHITA, SEDGWICK COUNTY, KANSAS**



STATE OF KANSAS, COUNTY OF SEDGWICK, SS:  
I, Don C. Moehring II, a Civil Engineer in said State and County do hereby certify that I have surveyed and platted "BOB CARTER ADDITION" to Wichita, Sedgwick County, Kansas, into Lots, a Block and Streets, the same being accurately set forth on the accompanying plat, and described as the West 139.0' of Lot 24 in R. A. Morris Tracts, Sedgwick County, Kansas.

Don C. Moehring II  
Consulting Engineer

Know all men by these presents that we the undersigned, property owners of the land as above set forth in the Civil Engineer's Certificate, have caused the same to be surveyed and platted into Lots, a Block and Streets, and to be known as "BOB CARTER ADDITION" to Wichita, Sedgwick County, Kansas. Easements for the construction and maintenance of public utilities, as indicated on the accompanying plat, are hereby granted. The Streets are hereby dedicated to, and for the use of the public.

Richard P. Thompson  
Richard P. Thompson

Sharon A. Thompson  
Sharon A. Thompson

STATE OF KANSAS, COUNTY OF SEDGWICK, SS:  
Be it remembered that on 23 day of JUNE, 1983, before me, a Notary Public in and for said State and County, came Richard P. Thompson and Sharon A. Thompson, to me personally known to be the same persons who executed the foregoing instrument of writing and duly acknowledged the execution of the same. In testimony whereof, I have hereunto set my hand and affixed my notarial seal the day and year above written.

Joseph D. Bode  
Notary Public  
My Commission Expires 6-30-86

We the undersigned, mortgagee on the above described property do hereby consent to the plat of "BOB CARTER ADDITION".

KANSAS STATE BANK & TRUST COMPANY  
Arnold Gray  
Executive Vice President

J. V. Lentell  
President and Chairman of the Board

STATE OF KANSAS, COUNTY OF SEDGWICK, SS:  
Be it remembered that on this 23 day of June, 1983, before me, a Notary Public in and for said State and County, came Kansas State Bank & Trust Company by Arnold Gray, Executive Vice President and J. V. Lentell, President and Chairman of the Board, to me personally known to be the same persons who executed the foregoing instrument of writing and duly acknowledged the execution of the same. In testimony whereof I have hereunto set my hand and affixed my notarial seal the day and year above written.

Sheryl A. George  
Notary Public  
My Commission Expires 1-1-87

This plat of "BOB CARTER ADDITION" has been submitted to and approved by the Wichita-Sedgwick County Metropolitan Area Planning Commission.

Dated this 16<sup>th</sup> day of June, 1983.

WICHITA-SEDGWICK COUNTY METROPOLITAN AREA PLANNING COMMISSION  
David Bayouth  
Chairman  
Robert A. Lakin  
Secretary

This plat has been approved and all dedications shown hereon, if any, accepted by the City Commission of the City of Wichita, Kansas, this 12<sup>th</sup> day of JULY, 1983.

Margalee Wright  
Mayor  
Donald C. Gistic  
City Clerk

This plat has been approved and all dedications shown hereon, if any, accepted by the Board of Commissioners of Sedgwick County, Kansas, this \_\_\_\_\_ day of \_\_\_\_\_, 1983.

\_\_\_\_\_  
Chairman  
\_\_\_\_\_  
Commissioner  
\_\_\_\_\_  
Commissioner  
Attest: Dorothy K. White  
County Clerk

STATE OF KANSAS, COUNTY OF SEDGWICK SS:  
This is to certify that this instrument was filed for record in the Register of Deeds Office at \_\_\_\_\_ on the \_\_\_\_\_ day of \_\_\_\_\_, 1983.

\_\_\_\_\_  
Register of Deeds  
Bette F. McCart  
Deputy  
Entered on transfer record this \_\_\_\_\_ day of \_\_\_\_\_, 1983.  
Dorothy K. White  
County Clerk