

# CEDAR CLIFF ADDITION

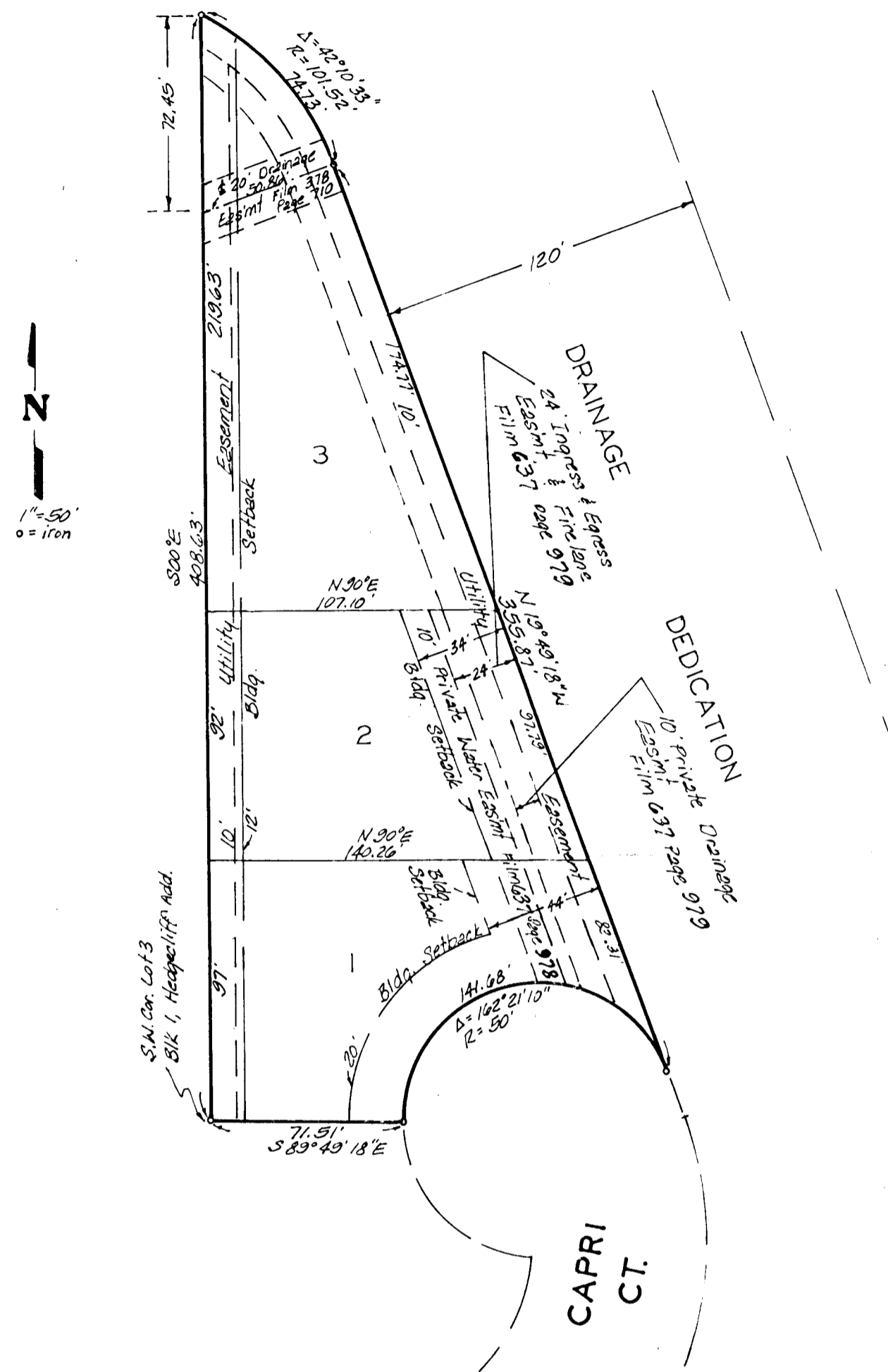
WICHITA, KANSAS

State of Kansas }  
 Sedgwick County } s.s. We, Baughman Company P.A.,  
 Surveyors in aforesaid county and state do hereby  
 certify that we have surveyed and platted "CEDAR  
 CLIFF ADDITION" Wichita, Kansas, and that the ac-  
 companying plat is a true and correct exhibit of  
 the property surveyed described as and being a  
 replat of Lots 3 and 4, Block 1, Hedgecliff Addi-  
 tion, Wichita, Sedgwick County, Kansas, being situated  
 in the N.E. 1/4 of Sec. 32, Twp. 27-S, R. 2-E of the 6th P.M.

6/1/83 Date Baughman Company, P.A.  
 William L. Kerber Surveyor

Know all men by these presents  
 that we, the undersigned, have caused the land de-  
 scribed in the surveyors certificate to be platted  
 into lots to be known as "CEDAR CLIFF ADDITION,"  
 Wichita, Kansas. The utility easements are hereby  
 granted as indicated for the construction and main-  
 tenance of all public utilities.

Bill Suter



State of Kansas }  
 Sedgwick County } s.s. The foregoing instrument was  
 acknowledged before me this 8th day of  
 February 1984, by Bill Suter, a single person.

Mark A. Sawyer Notary Public  
 Mark A. Sawyer  
 May App. Exp. 12 May 1984

This plat of "CEDAR CLIFF ADDI-  
 TION," Wichita, Kansas, has been submitted to and  
 approved by the Wichita-Sedgwick County Metro-  
 politan Area Planning Commission, Wichita, Kansas.  
 Dated this 1st day of June 1983.

Wichita-Sedgwick County Metropolitan Area Planning  
 Commission

Daniel S. Sawyer Chairman  
 Daniel Sawyer  
 Robert A. Larson Secretary  
 Robert A. Larson

This plat approved and all dedi-  
 cations shown hereon accepted by the Board of  
 Commissioners of the City of Wichita, Kansas,  
 this 21st day of June 1983.

Madeline Wright Mayor  
 Donald J. Bissel City Clerk  
 Donald J. Bissel

This plat approved and all dedi-  
 cations shown hereon accepted by the Board of  
 Commissioners of Sedgwick County, Kansas, this  
 day of 1983.

Jack Spratt Chairman  
 Donald E. Gragg Commissioner  
 Tom Scott Commissioner  
 Dorothy K. White County Clerk

Entered on transfer record this  
 day of 1983.

Dorothy K. White County Clerk

State of Kansas }  
 Sedgwick County } s.s. This is to certify that this  
 plat has filed for record in the office of the  
 Register of Deeds this day of  
 1983, at o'clock M; and is duly record-  
 ed.

Bette F. McCart Register of Deeds  
 Pat Kettler Deputy