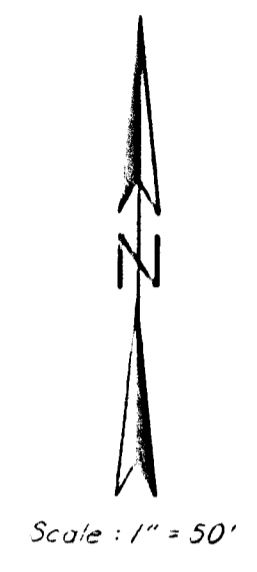
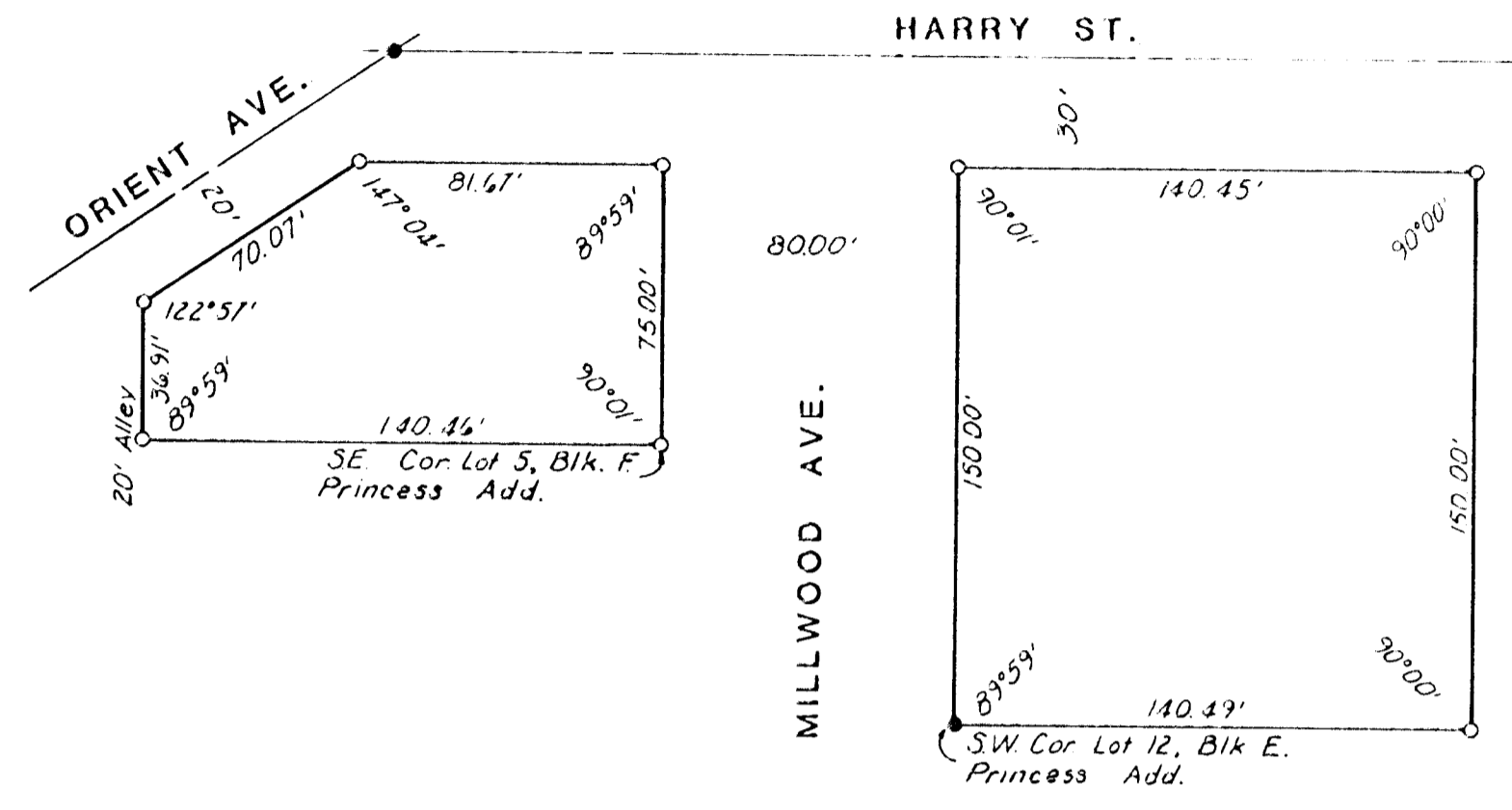


FINAL PLAT OF
CAZEL'S 6TH ADDITION
WICHITA, KANSAS



THIS PLAT OF "CAZEL'S 6TH ADDITION", WICHITA, KANSAS, HAS BEEN SUBMITTED TO AND APPROVED BY THE WICHITA-SEDGWICK COUNTY METROPOLITAN AREA PLANNING COMMISSION, WICHITA, KANSAS, DATED THIS _____ DAY OF _____, 1981.

WICHITA-SEDGWICK COUNTY METROPOLITAN AREA PLANNING COMMISSION
 _____ CHAIRMAN
 JAMES L. GARDNER II
 _____ SECRETARY
 ROBERT A. LAXIN

THIS PLAT APPROVED AND ALL DEDICATIONS SHOWN HEREON ACCEPTED BY THE BOARD OF CITY COMMISSIONERS, WICHITA, KANSAS, THIS _____ DAY OF _____, 1981.

_____ MAYOR
 R.C. BROWN
 _____ CITY CLERK
 DONALD C. GISICK

THIS PLAT APPROVED AND ALL DEDICATIONS SHOWN HEREON ACCEPTED BY THE BOARD OF COUNTY COMMISSIONERS, SEDGWICK COUNTY, KANSAS, THIS _____ DAY OF _____, 1981.

_____ CHAIRMAN
 DONALD E. GRAGG
 _____ COMMISSIONER
 JACK SPRATT
 _____ COMMISSIONER
 TOM SCOTT
 _____ COUNTY CLERK
 DOROTHY K. WHITE

ENTERED ON TRANSFER RECORD THIS _____ DAY OF _____, 1981.

_____ COUNTY CLERK
 DOROTHY K. WHITE

STATE OF KANSAS)
 SEDGWICK COUNTY) SS
 I, ALLEN D. LOWRY, A REGISTERED LAND SURVEYOR IN AFORESAID COUNTY AND STATE, DO HEREBY CERTIFY THAT I HAVE SURVEYED AND PLATTED "CAZEL'S 6TH ADDITION", WICHITA, KANSAS, AND THAT THE ACCOMPANYING PLAT IS A TRUE AND CORRECT EXHIBIT OF THE PROPERTY SURVEYED, DESCRIBED AS A REPLAT OF LOTS 1,3,45, BLOCK F; LOTS 2,11,6,8,10,12 OF VACATED BLOCK E, IN PRINCESS ADDITION TO WICHITA, KANSAS.
 DATE _____ ALLEN D. LOWRY R.L.S. 755

KNOW ALL MEN BY THESE PRESENTS THAT WE, THE UNDERSIGNED, HAVE CAUSED THE LAND DESCRIBED IN THE SURVEYORS CERTIFICATE TO BE PLATTED INTO TWO (2) LOTS TO BE KNOWN AS "CAZEL'S 6TH ADDITION", WICHITA, KANSAS.

 RONALD CAZEL

 ROSALIND D. CAZEL

STATE OF KANSAS)
 COUNTY OF SEDGWICK) SS
 BE IT REMEMBERED THAT ON THIS _____ DAY OF _____, 1981, BEFORE ME A NOTARY PUBLIC IN AND FOR SAID COUNTY AND STATE, CAME RONALD CAZEL AND ROSALIND D. CAZEL, HIS WIFE, TO ME PERSONALLY KNOWN TO BE THE SAME PERSONS WHO EXECUTED THE FOREGOING INSTRUMENT OF WRITING AND DULY ACKNOWLEDGED THE EXECUTION OF SAME. IN TESTIMONY WHEREOF I HAVE HEREUNTO SET MY HAND AND AFFIXED MY NOTARIAL SEAL THE DAY AND YEAR ABOVE WRITTEN.
 _____, NOTARY PUBLIC
 MY APPOINTMENT EXPIRES: _____

STATE OF KANSAS)
 COUNTY OF SEDGWICK) SS
 THIS IS TO CERTIFY THAT THIS PLAT HAS BEEN FILED FOR RECORD IN THE OFFICE OF THE REGISTER OF DEEDS THIS _____ DAY OF _____, 1981, AT _____ O'CLOCK _____ M, AND IS DULY RECORDED.
 _____ REGISTER OF DEEDS
 BETTE F. MCCART
 _____ DEPUTY
 PAT KETTLER