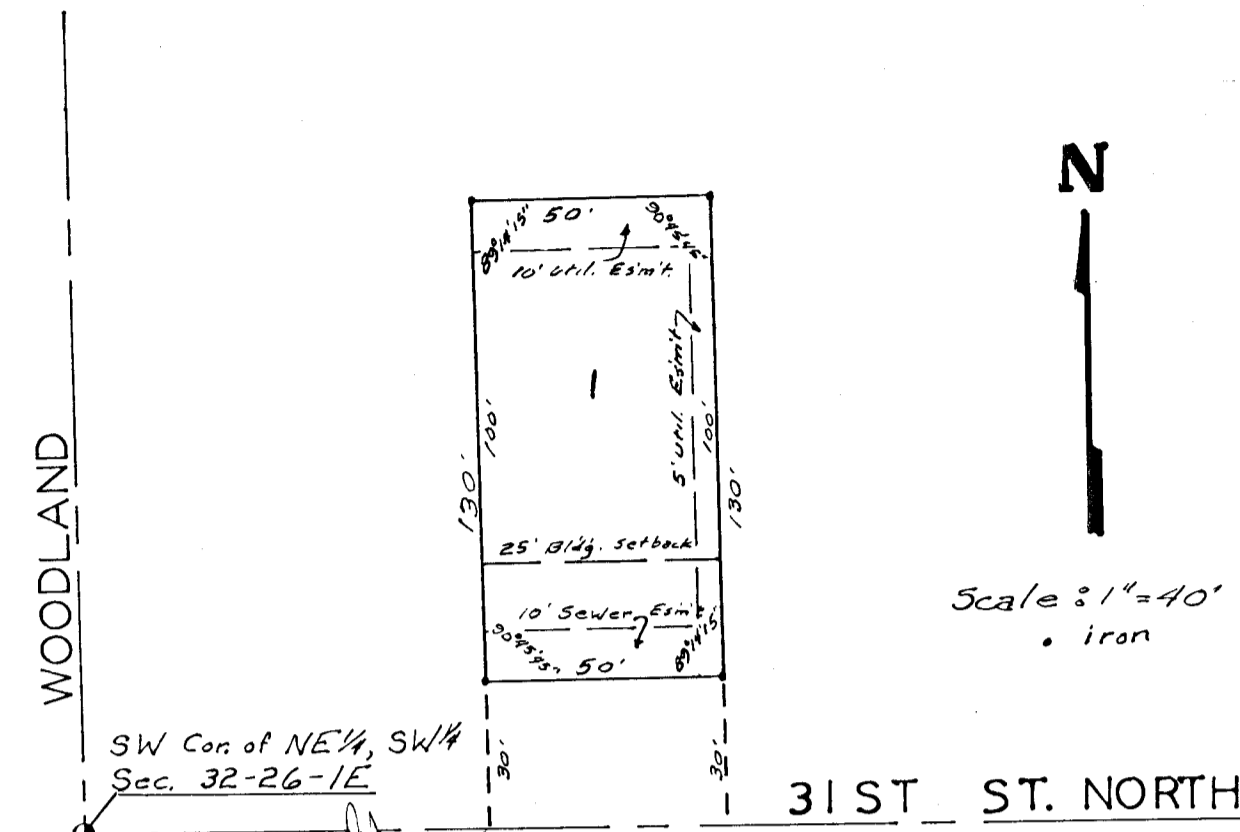


CASTER ADDITION

WICHITA, KANSAS

State of Kansas }
 Sedwick County } s.s. We, Baughman Company, P.A.,
 Surveyors in aforesaid county and state do
 hereby certify that we have surveyed and
 platted "CASTER ADDITION" Wichita, Kansas,
 and the accompanying plat is a true and
 correct exhibit of the property surveyed,
 described as the south 130 feet of the east
 50 feet of the west 1/4 of the NE 1/4 of
 the SW 1/4 of Sec. 32, Twp. 26-S, R-1-E of the 6th P.M.
 Sedgwick County, Kansas



5/1/81
 Date
 Baughman Company, P.A.
 James E. Jordan Surveyor

Know all men by these presents
 that we, the undersigned, have caused the land
 described in the surveyors certificate to
 be platted into a lot and street to be known as
 "CASTER ADDITION", Wichita, Kansas.
 The easements are hereby granted as
 indicated for the construction and main-
 tenance of all public utilities. The street
 is hereby dedicated to and for the use of
 the public.

Ruth I. Caster
 Ruth I. Caster

State of Kansas }
 Sedgwick County } s.s. Be it remembered that on this
 3th day of May 1981, before me a notary public
 in aforesaid county and state came Ruth I. Caster,
 a single person. In testimony whereof I have
 hereunto set my hand and affixed my notarial
 seal the day and year above written.

Mark A. Sawyer Notary Public
 My Comm. Exp. 3/12/84

State of Kansas }
 Sedgwick County } s.s. This is to certify that
 this plat has been filed for record in the
 office of the Register of Deeds, this
 day of May 1981 at 1:00 o'clock P.M.;
 and is duly recorded.

Betty K. McCurt Register of Deeds
 Pat Keller Deputy

This plat of "CASTER ADDITION",
 Wichita, Kansas, has been submitted to and
 approved by the Wichita-Sedgwick County
 Metropolitan Area Planning Commission,
 Wichita, Kansas.
 Dated this 12th day of MARCH 1981.
 Wichita-Sedgwick County Metropolitan Area Planning Commission.

Alvin J. Hannassy, Jr. Chairman
 Robert A. Lakin Secretary

This plat approved and all
 dedications shown hereon accepted by the
 Board of Commissioners of the City of
 Wichita, Kansas this 19th day of May 1981.

R.C. Brown Mayor
 Donald C. Garsick City Clerk

This plat approved and all
 dedications shown hereon accepted by
 the Board of Commissioners, Sedgwick
 County, Kansas, this ___ day of ___ 1981.

Donald E. Gregg Chairman
 Jack Spratt Commissioner
 Tom Scott Commissioner
 Dorothy K. White County Clerk

Entered on transfer record
 this ___ day of ___ 1981.
 Dorothy K. White County Clerk