

204' south of NE 1/4  
SE 1/4, sec. 35  
Twp 27S, R.1.W.

X 1/2" 12" AC 2/1/10  
Access Control Except for 4 openings

WEST

STREET

EXISTING  
BUILDING

ASPHALT PARKING

EXISTING  
BUILDING

Proposed Pavement

Proposed 9' x 3.5' R.C.B.

35' BUILDING SETBACK

RIGHT OF WAY  
DEDICATION  
(Pump station)

16" San. Sewer?

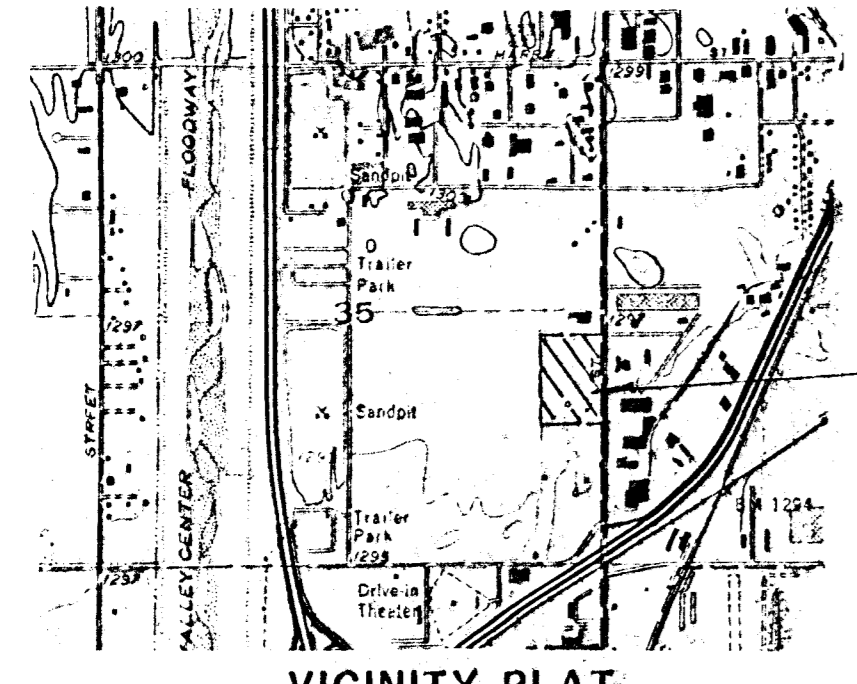
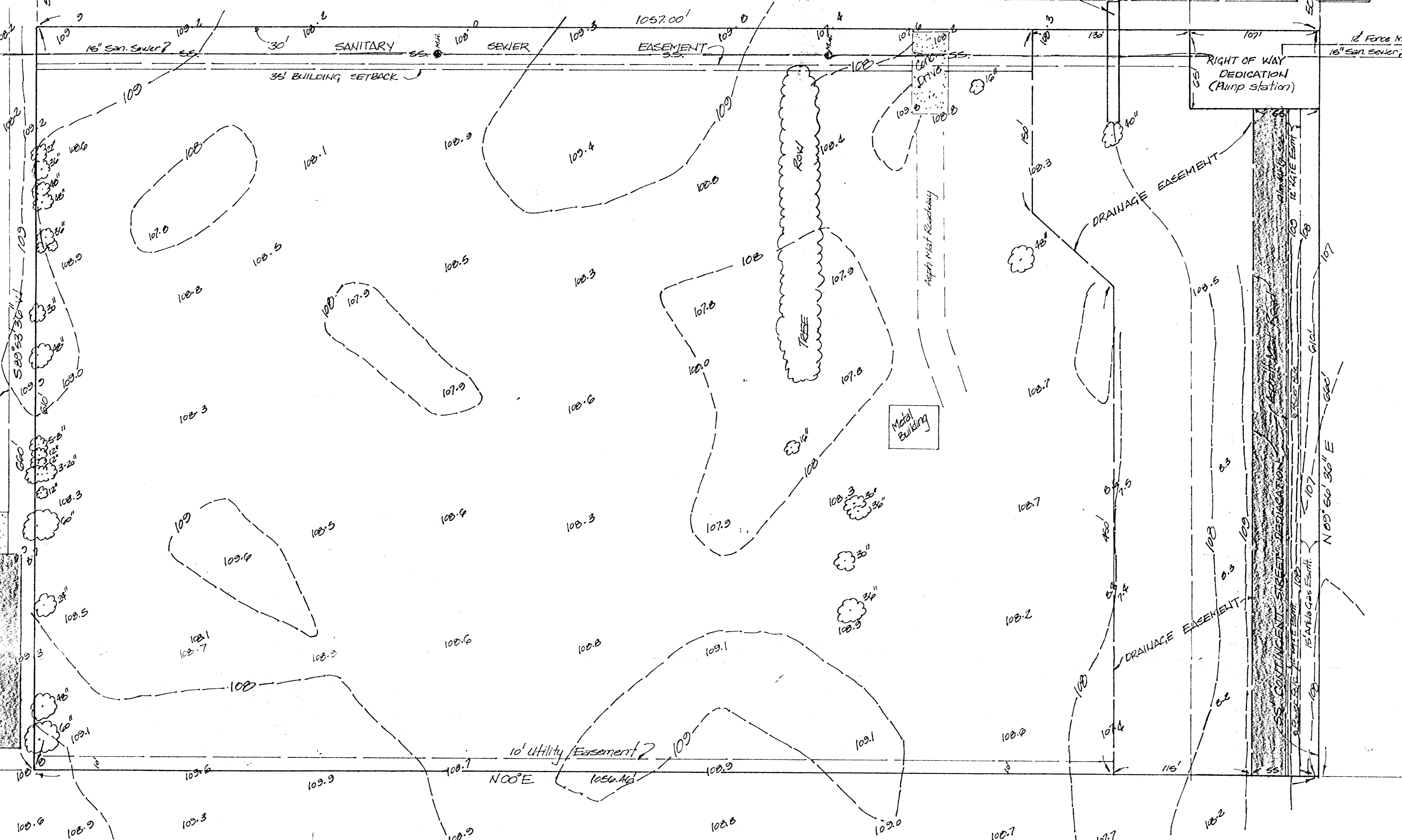
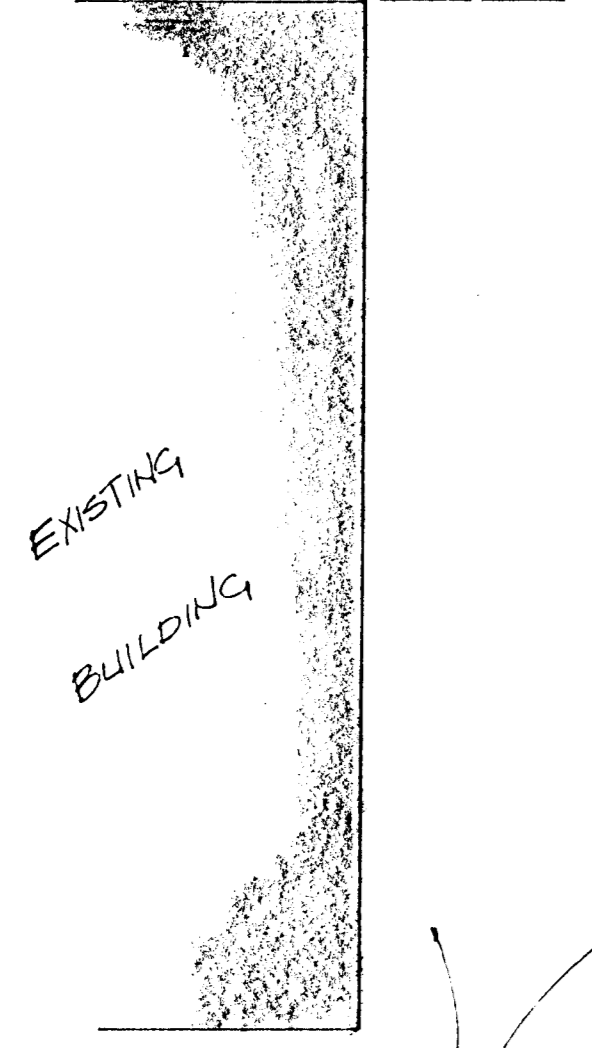
SANITARY

SEWER

EASEMENT

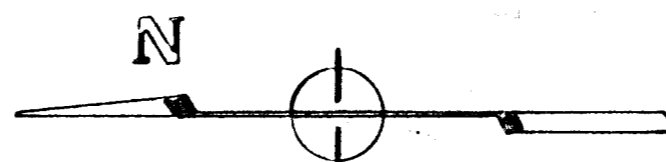
12" Force Main?

16" San. Sewer?



CASCO ADDITION

Main 1/4, S 22 is under contract



SCALE: 1" = 40'  
CITY DATUM  
BENCH MARK: South Bolt on top of Fire Hydrant 133'4" E&E of E. JEWELL and West St. Elev. = 112.14 City Datum

# PRELIMINARY PLAT CASCO ADDITION

PART OF SE 1/4 OF SEC. 35, TWP. 27-S, R-1-W

CASCO INC.  
FRED SCHILLER, PRES.

BAUGHMAN COMPANY, P.A.  
SURVEYING & ENGINEERING  
310-262-7271 • 330 LAURA • WICHITA, KANSAS 67211