

CASADO--WALKER ADDITION

WICHITA, KANSAS

State of Kansas ss Sedgwick County ss We, Boughman Company P.A., Surveyors in aforesaid county and state do hereby certify that we have surveyed and platted "CASADO-WALKER ADDITION," Wichita, Kansas, and that the accompanying plat is a true and correct exhibit of the property surveyed described as a tract beginning at a point on the east line of the S.E. 1/4 of Sec. 29, Twp. 27-S, R-1-W of the 4th P.M., Sedgwick County, Kansas, said point being 287 feet north of the north line of the A.T.&S.F. Railroad Right-of-Way (Deed Book 31, Page 344); thence west parallel with the north line of said S.E. 1/4, 330 feet; thence north 367.7 feet more or less to a point in the southerly right-of-way line of U.S. 54 Highway as condemned in Case No. 38302; thence northeasterly along said southerly right-of-way line 361.3 feet more or less to a point on the east line of said S.E. 1/4; thence south 508.99 feet more or less to the place of beginning.

Feb. 22, 1985
Date
Boughman Company, P.A.
John E. Lundquist, Surveyor

Know all men by these presents that we the undersigned, have caused the land described in the surveyors certificate to be platted into a lot, and streets to be known as "CASADO-WALKER ADDITION," Wichita, Kansas. The utility easement is hereby granted as indicated for the construction and maintenance of all public utilities. The streets are hereby dedicated to and for the use of the public. All abutters rights of access to or from Kellogg Drive over and across the north line of Lot 1 and to or from Tyler Road over and across the east line of Lot 1 and to or from U.S. 54 over and across the north line of Kellogg Drive adjacent to the north line of said Lot 1, are hereby granted to the City of Wichita, provided however that Lot 1 shall have 2 points of access to Kellogg Drive over all but the east 40 feet of the north line of said Lot 1 and shall have 3 points of access to Tyler Road over all but the north 40 feet of the east line of said Lot 1, all as shall be determined by the City Engineer of the City of Wichita, Kansas.

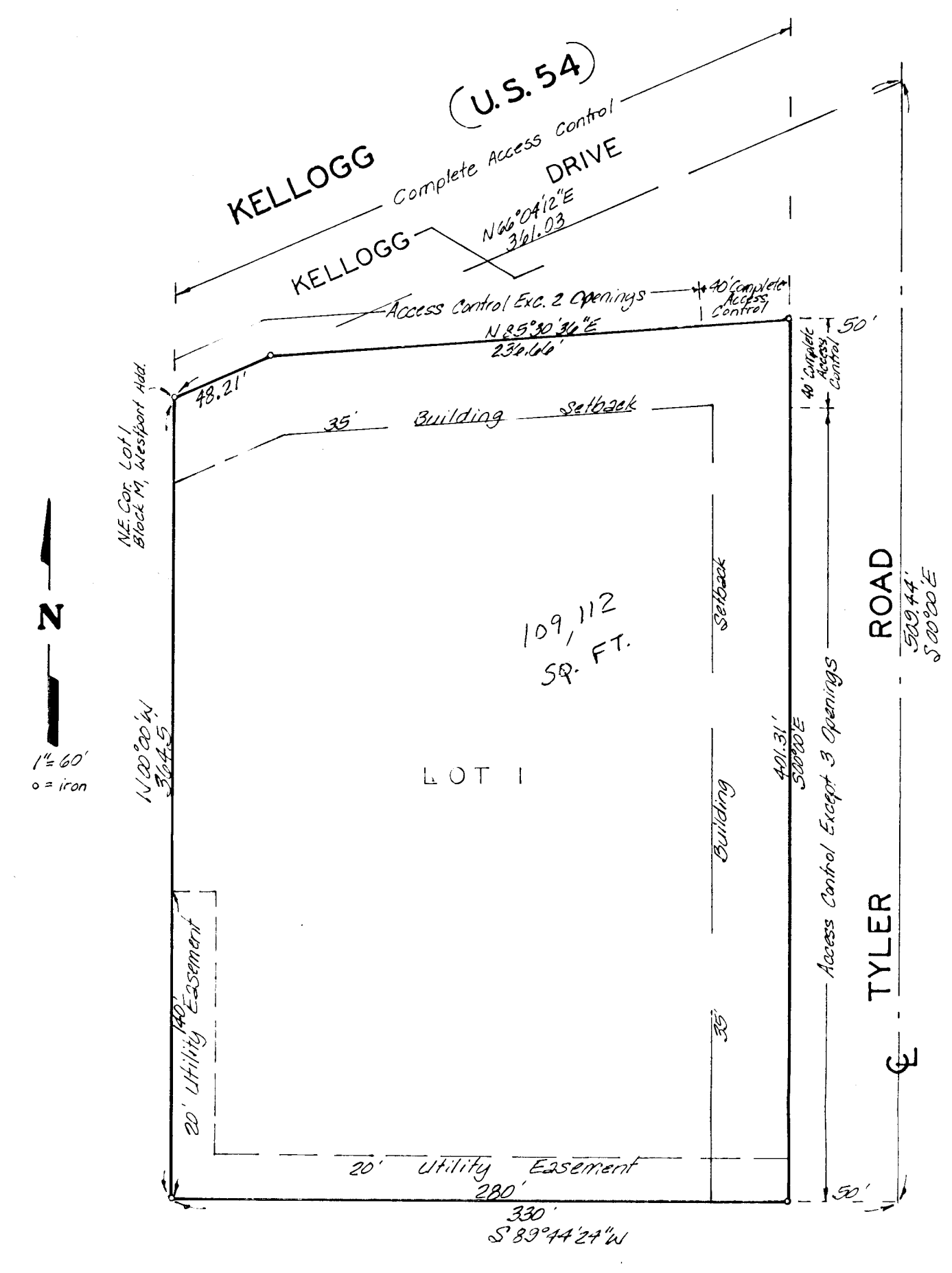
Luis A. Casado Vera J. Casado
Wilbur E. Walker Bernice H. Walker

State of Kansas ss Sedgwick County ss The foregoing instrument was acknowledged before me this 22th day of February 1985, by Luis A. Casado and Vera J. Casado.

Mark A. Lundy, Notary Public
My App. Exp. 12 May 1988

State of Kansas ss Sedgwick County ss The foregoing instrument was acknowledged before me this 22th day of February 1985, by Wilbur E. Walker and Bernice H. Walker.

Mark A. Lundy, Notary Public
My App. Exp. 12 May 1988



This plat of "CASADO-WALKER ADDITION," Wichita, Kansas, has been submitted to and approved by the Wichita-Sedgwick County Metropolitan Area Planning Commission, Wichita, Kansas. Dated this 24th day of January 1985.

Wichita-Sedgwick County Metropolitan Area Planning Commission
William J. Crebel, Vice-Chairman
Robert A. Lakin, Secretary

This plat approved and all dedications shown hereon accepted by the Board of Commissioners of the City of Wichita, Kansas, this 19th day of April 1985.

Robert E. Knight, Mayor
Donald E. Briscoe, City Clerk

Entered on transfer record this day of 1985.
Don Wright, County Clerk

State of Kansas ss Sedgwick County ss This is to certify that this plat has been filed for record in the office of the Register of Deeds, this day of 1985, at o'clock M; and is duly recorded.

Pat Kettler, Register of Deeds
Ed Resa, Deputy