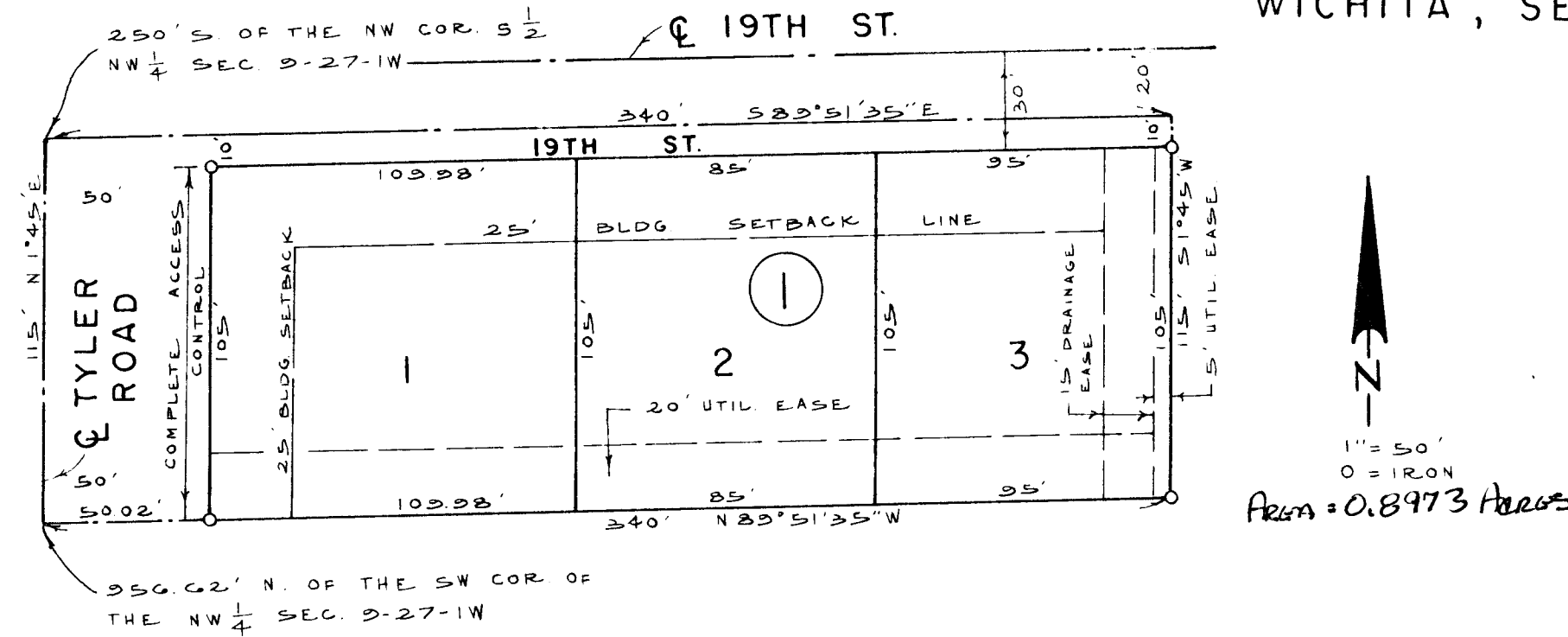


# DONALD CARY ADDITION

WICHITA, SEDGWICK COUNTY, KANSAS



State of Kansas, County of Sedgwick, SS.

The foregoing instrument was acknowledged before me this \_\_\_\_\_ day of \_\_\_\_\_, 19\_\_\_\_, by \_\_\_\_\_ of Mid Kansas Federal Savings and Loan Association of Wichita, a Kansas corporation, on behalf of the corporation.



\_\_\_\_\_, Notary Public

My Commission expires: \_\_\_\_\_

This plat of "DONALD CARY ADDITION", Wichita, Sedgwick County, Kansas has been submitted to and approved by the Wichita-Sedgwick County Metropolitan Area Planning Commission, Wichita, Kansas.

Dated this 12<sup>th</sup> day of June, 1986

Wichita-Sedgwick County Metropolitan Area Planning Commission

John Terry Moore, Chairman

Marvin S. Kreut, Secretary

This plat approved and all dedications shown hereon accepted by the Board of City Commissioners of the City of Wichita, Kansas, this \_\_\_\_\_ day of \_\_\_\_\_, 1987.

Robert G. Knight, Mayor

Dale E. Rea, Ready City Clerk

State of Kansas, County of Sedgwick, SS.

I, Lowell D. High, Land Surveyor in said State and County do hereby certify that I have surveyed and platted "DONALD CARY ADDITION", Wichita, Sedgwick County, Kansas and that the accompanying plat is a true and correct exhibit of said survey described as follows: Beginning at a point on the west line of the S 1/2 of the NW 1/4 of Section 9, T27S, R1W of the 6th P.M., Sedgwick County, Kansas, 250 feet south of the NW corner of said S 1/2 of said NW 1/4; thence south on said west line, 115 feet; thence east parallel to the north line of said S 1/2 of said NW 1/4, 340 feet; thence north 115 feet; thence west 340 feet to the point of beginning.

Lowell D. High  
Lowell D. High, L.S. 9-1-87

Know all men by these presents that we, Donald E. Cary and Katherine L. Cary, husband and wife and Douglas E. Cary and Margaret B. Cary, husband and wife, have caused the land described in the Land Surveyor's certificate to be platted into lots, a block and streets to be known as "DONALD CARY ADDITION", Wichita, Sedgwick County, Kansas. Utility easements as indicated on the plat are hereby granted for the construction and maintenance of all public utilities. The streets are hereby dedicated to and for the use of the public.

All abutter's rights of access to or from Tyler Road over and across the west line of Lot 1, Block 1, are hereby granted to the City of Wichita.

Donald E. Cary

Douglas E. Cary

Katherine L. Cary

Margaret B. Cary

State of Kansas, County of Sedgwick, SS.

The foregoing instrument was acknowledged before me this \_\_\_\_\_ day of \_\_\_\_\_, 19\_\_\_\_, by Donald E. Cary and Katherine L. Cary, husband and wife and Douglas E. Cary and Margaret B. Cary, husband and wife.

Debra K. Blasdel, Notary Public

My Commission expires: \_\_\_\_\_

Mid Kansas Federal Savings and Loan Association of Wichita, by \_\_\_\_\_, mortgagee of the land described in the Land Surveyor's certificate, does hereby consent to the platting of "DONALD CARY ADDITION", Wichita, Sedgwick County, Kansas.

Mid Kansas Federal Savings and Loan Association of Wichita

ATTEST:  
Konstance L. Laws, Asst. Secretary  
Konstance L. Laws

Entered on transfer record this \_\_\_\_\_ day of \_\_\_\_\_, 1987.

Don Wright, County Clerk

State of Kansas, County of Sedgwick, SS.

This is to certify that this instrument was filed for record in the Register of Deeds Office, at \_\_\_\_\_ o'clock \_\_\_\_\_ m., on the \_\_\_\_\_ day of \_\_\_\_\_, 1987.

Pat Kettler, Register of Deeds

Ed Reso, Deputy