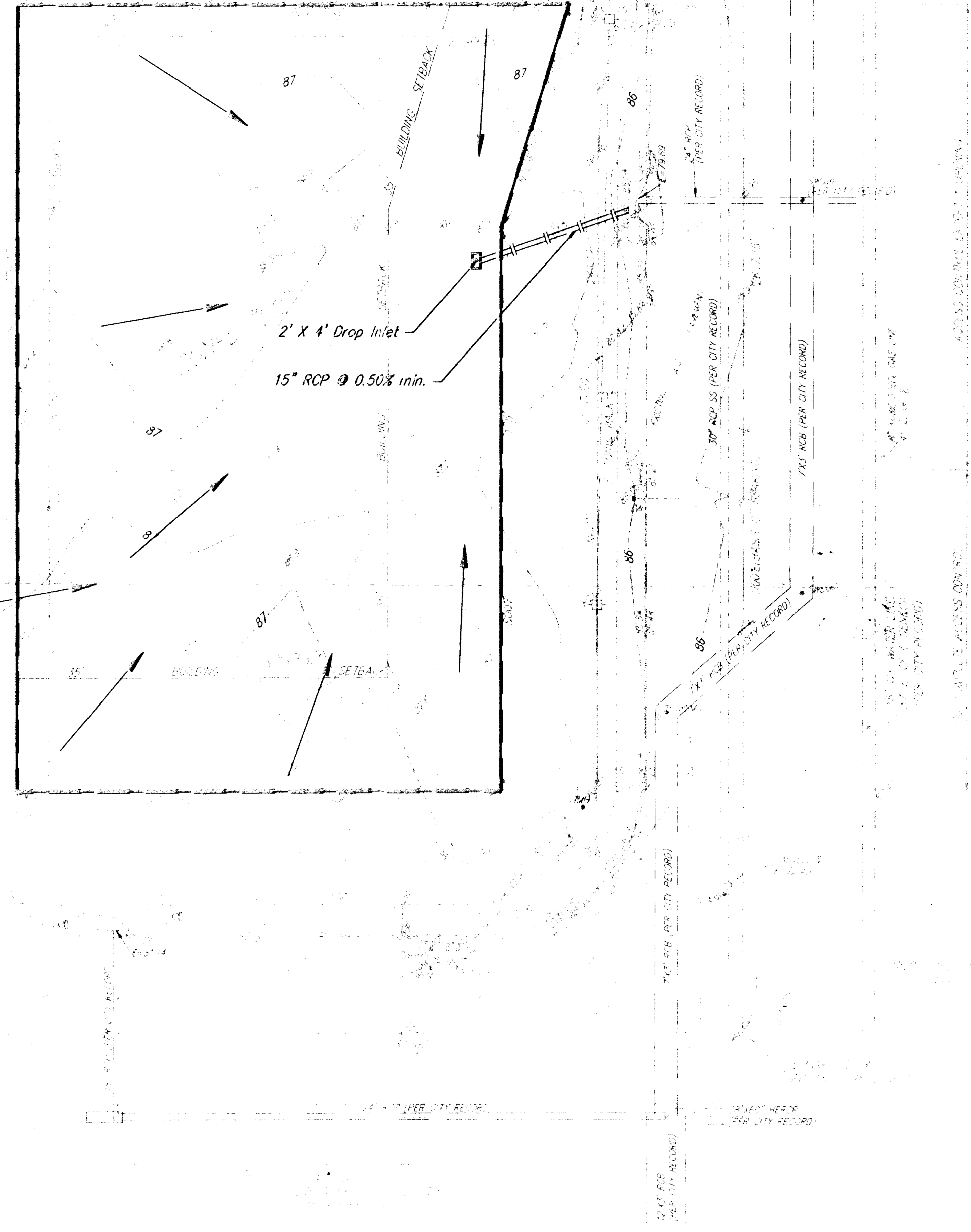
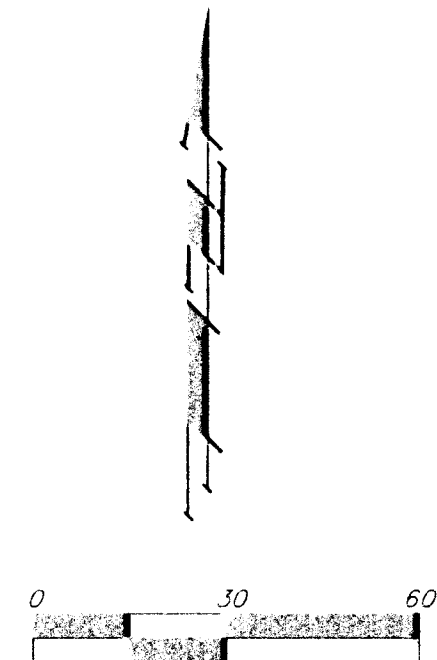


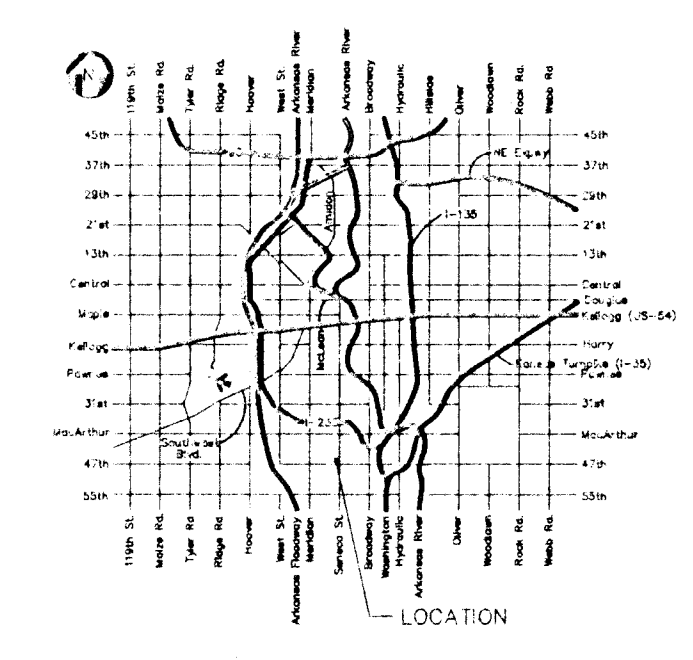
# DRAINAGE PLAN

## R & L CARPENTER ADDITION

### WICHITA, SEDGWICK COUNTY, KANSAS



D.A. = 0.9 acres  
 "C" = 0.9  
 I2 = 3.83 in/hr  
 I100 = 7.37 in/hr  
 Q2 = 3.1 cfs  
 Q100 = 6.0 cfs

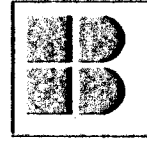


VICINITY MAP

**BENCHMARK:**  
 SENECA & 47TH ST. SO. - CITY OF WICHITA BENCHMARK DISC  
 NE COR. OF INTERSECTION - 74' N. & 44' E. OF C. BOTH.  
 ELEV. = 87.431 CITY DATUM

**OWNER:**  
 R & L CARPENTER ENTERPRISES, LLC  
 ATTN: ROGER CARPENTER  
 812 W. 11TH STREET  
 P.O. BOX 1207  
 COFFEYVILLE, KS 67337-0921  
 PH# 316-251-7720

1-16-1997


**D.D. BAUGHMAN COMPANY P.A.**  
 ENGINEERING, SURVEYING, & PLANNING  
316-262-7271 • 310 ELLIS • WICHITA, KANSAS 67211