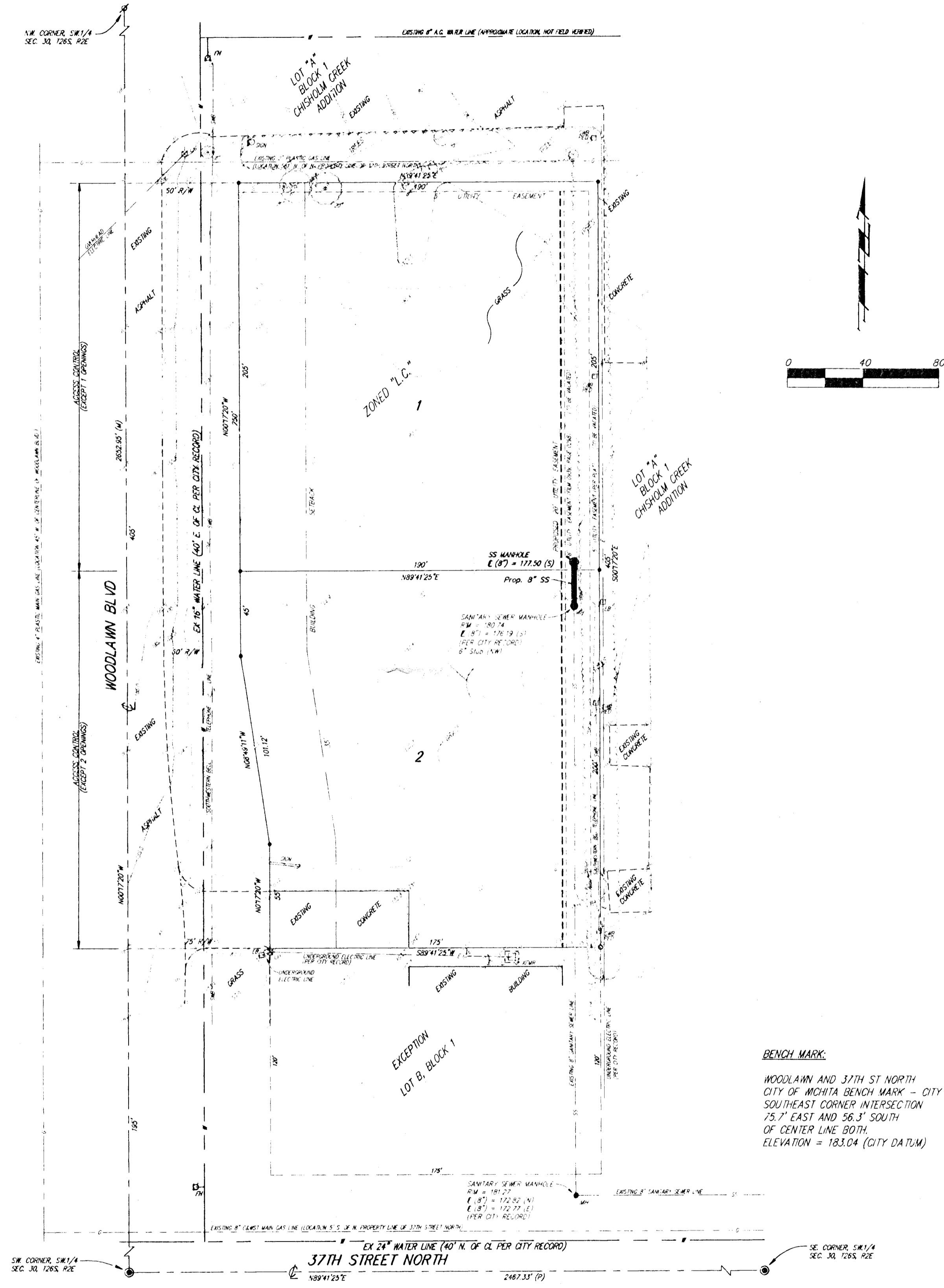


Utility Plan  
**R & L CARPENTER 3RD ADDITION**  
 WICHITA, SEDGWICK COUNTY, KANSAS



**BENCH MARK:**  
 WOODLAWN AND 37TH ST NORTH  
 CITY OF WICHITA BENCH MARK - CITY DISC  
 SOUTHEAST CORNER INTERSECTION  
 75.7' EAST AND 56.1' SOUTH  
 OF CENTER LINE BOTH  
 ELEVATION = 183.04 (CITY DATUM)