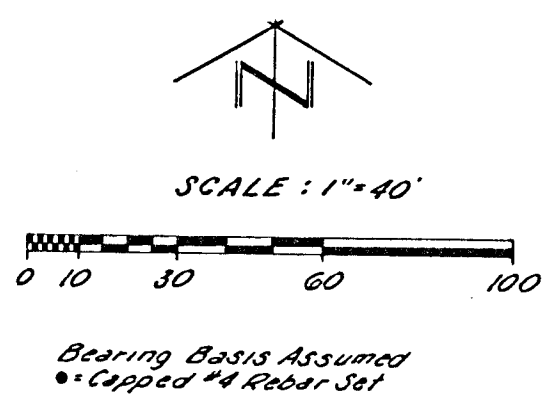
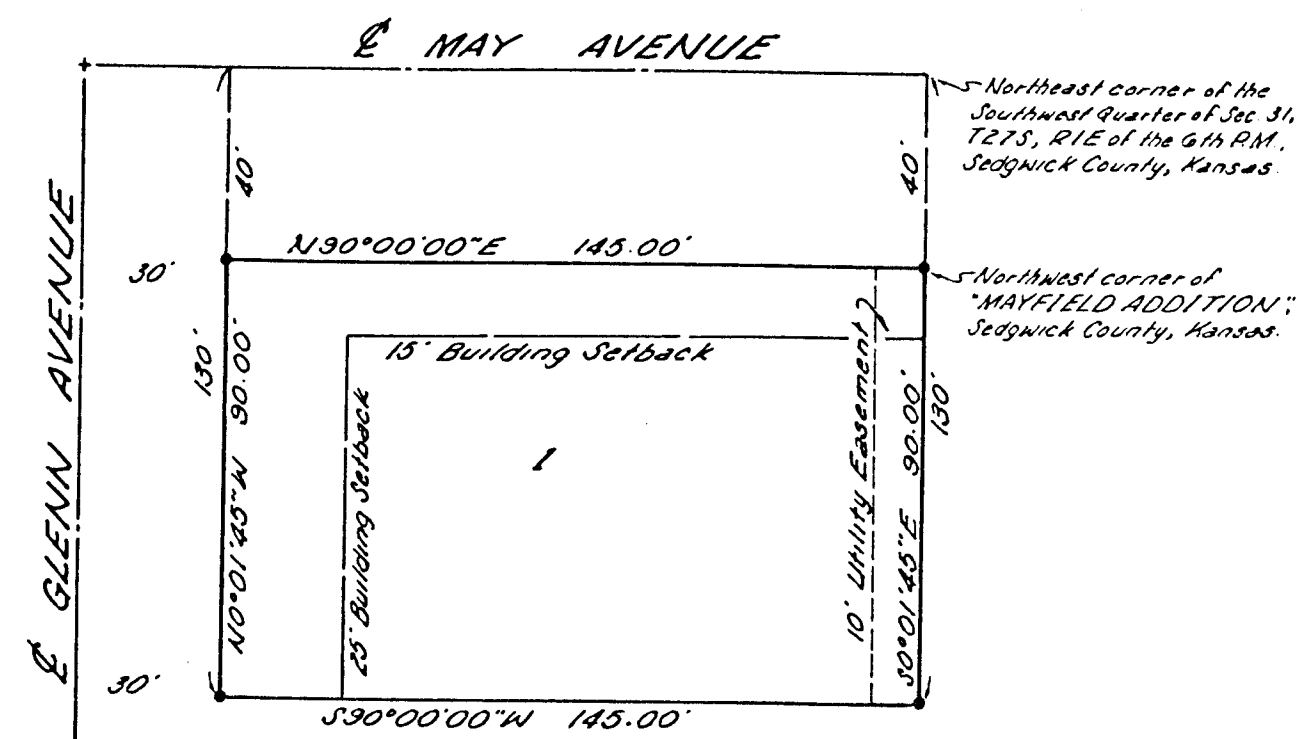


Bea Carpenter's Addition

BEA CARPENTER'S ADDITION WICHITA, SEDGWICK COUNTY, KANSAS

SW 1/4 SEC. 31, T27S, R1E



THIS PLAT APPROVED AND ALL DEDICATIONS SHOWN HEREON ACCEPTED BY THE BOARD OF CITY COMMISSIONERS OF THE CITY OF WICHITA, KANSAS, THIS 25TH DAY OF NOV, 1986.

BOARD OF CITY COMMISSIONERS

Tony Casado, MAYOR
TONY CASADO

DALE B. PEA CITY CLERK
DALE B. PEA

STATE OF KANSAS)
SEDGWICK COUNTY) SS

THIS IS TO CERTIFY THAT THIS INSTRUMENT WAS FILED FOR RECORD IN THE REGISTER OF DEEDS OFFICE AT 0 O'CLOCK AM, ON THE 25 DAY OF NOVEMBER, 1986.

_____, REGISTER OF DEEDS
PAT KETTLER

_____, DEPUTY
ED RESA

ENTERED ON TRANSFER RECORD THIS _____ DAY OF _____, 1986.

_____, COUNTY CLERK
DON WRIGHT

STATE OF KANSAS)
SEDGWICK COUNTY) SS

WE, TERRA TECH LAND SURVEYING, INC., A CORPORATION REGISTERED AND AUTHORIZED TO PRACTICE LAND SURVEYING IN THE STATE OF KANSAS, HEREBY CERTIFY THAT WE HAVE SURVEYED AND PLATTED "BEA CARPENTER'S ADDITION", WICHITA, SEDGWICK COUNTY, KANSAS, AND THE ACCOMPANYING PLAT IS A TRUE AND CORRECT EXHIBIT OF SUCH SURVEY, DESCRIBED AS FOLLOWS:

THE NORTH 130 FEET OF THE EAST 145 FEET OF THE SOUTHWEST QUARTER OF SECTION 31, TOWNSHIP 27 SOUTH, RANGE 1 EAST OF THE SIXTH PRINCIPAL MERIDIAN, SEDGWICK COUNTY, KANSAS.

TERRA TECH LAND SURVEYING, INC.

T. L. Daniel
T. L. DANIEL LS#489
31 October, 1986
DATE

KNOW ALL MEN BY THESE PRESENTS THAT I THE UNDERSIGNED OWNER OF THE LAND DESCRIBED IN THE SURVEYOR'S CERTIFICATE HAVE CAUSED THE SAME TO BE SURVEYED AND PLATTED INTO A LOT AND A STREET TO BE KNOWN AS "BEA CARPENTER'S ADDITION", WICHITA, SEDGWICK COUNTY, KANSAS. THE EASEMENT AS SHOWN HEREON IS GRANTED FOR THE CONSTRUCTION AND MAINTENANCE OF ALL PUBLIC UTILITIES. THE STREET IS HEREBY DEDICATED TO AND FOR THE USE OF THE PUBLIC.

Beatrice Carpenter
BEATRICE CARPENTER

STATE OF KANSAS)
SEDGWICK COUNTY) SS

THE FOREGOING INSTRUMENT WAS ACKNOWLEDGED BEFORE ME THIS 13TH DAY OF NOVEMBER, 1986, BY BEATRICE CARPENTER.

Michele R. Hall, NOTARY PUBLIC
MICHELE R. HALL
MY APPOINTMENT EXPIRES: 2 August 1988

THIS PLAT OF "BEA CARPENTER'S ADDITION", WICHITA, SEDGWICK COUNTY, KANSAS HAS BEEN SUBMITTED TO AND APPROVED BY THE WICHITA-SEDGWICK COUNTY, METROPOLITAN AREA PLANNING COMMISSION, WICHITA, KANSAS, THIS 13TH DAY OF NOVEMBER, 1986.

WICHITA-SEDGWICK COUNTY METROPOLITAN AREA PLANNING COMMISSION

John Terry Moore, CHAIRMAN
JOHN TERRY MOORE

Michael E. Lindebak, SECRETARY
MICHAEL E. LINDEBAK