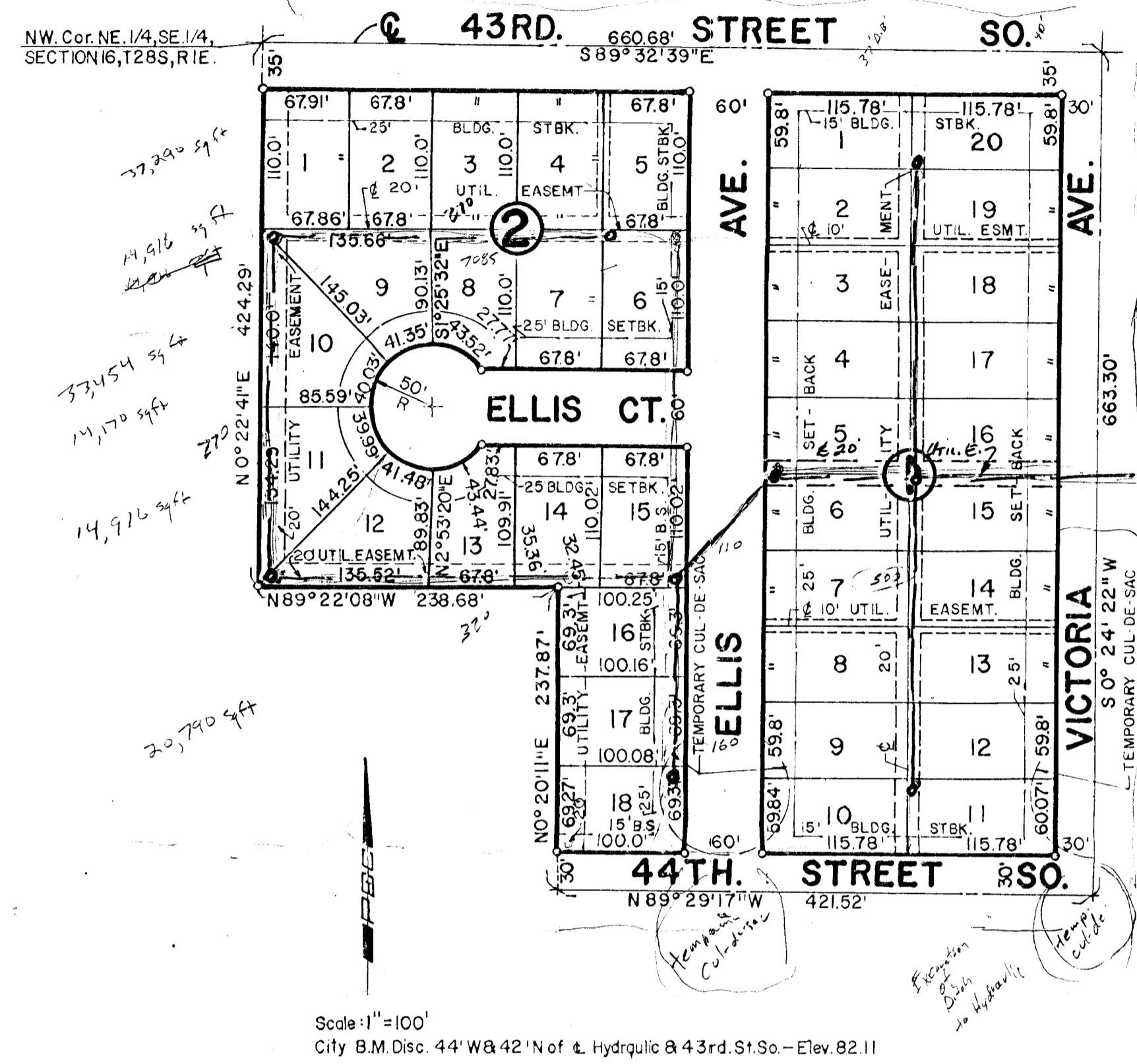


CAROL JEAN 2ND ADDITION

AN ADDITION TO WICHITA, SEDGWICK COUNTY, KANSAS



State of Kansas
County of Sedwick ss

I, R. H. Linn, a Professional Engineer in aforesaid County do hereby certify that on this _____ day of _____, 1981, I have caused to be surveyed and plotted "CAROL JEAN 2ND ADDITION" to Wichita, Sedgwick County, Kansas, into lots, blocks, and streets, and being more particularly described as: Beginning at the NW Cor. of the NW 1/4, SE 1/4, of Section 16, Township 28 South, Range 1 E. of the 6th P.M.; thence along the North Line of said SE 1/4 bearing S 89° 32' 39" E. a distance of 660.68 ft.; thence bearing S 0° 24' 22" W. a distance of 663.30 ft.; thence bearing N 89° 29' 17" W. a distance of 421.52 ft.; thence bearing N 0° 20' 11" E. a distance of 237.87 ft.; thence bearing N 89° 22' 08" W. a distance of 238.68 ft. to a point on the West Line of the NW 1/4 of said SE 1/4; thence along said West Line bearing N 0° 22' 41" E. a distance of 424.29 ft. to the point of beginning.

R. H. Linn, P.E.
No. 3684

Know all men by these presents that we, the undersigned property owners of the land as above set forth in the Engineer's Certificate, have caused the land to be surveyed and plotted into lots, blocks and streets, the same to be known as "CAROL JEAN 2ND ADDITION" to Wichita, Sedgwick County, Kansas. Easements, as indicated for the construction and maintenance of public utilities and drainage, are hereby granted. The streets are hereby dedicated to and for the use of the Public. The temporary Cul-de-sac right-of-way will expire at such future time as the streets are extended further South. All previous easements and right-of-ways are hereby vacated by virtue of K.S.A. 1972 Supp. 12-512(b).
Owners:

Melvin L. Brooks

Rachel M. Brooks

Walter W. White

Betty J. White

State of Kansas
County of Sedgwick ss

Be it remembered that on this _____ day of _____, 1981, before me, a notary public in aforesaid State and County, came Melvin L. Brooks & Rachel M. Brooks, Walter W. White & Betty J. White to me personally known to be the same persons who executed the foregoing instrument of writing and duly acknowledge the execution of same, in testimony whereof I have hereunto set my hand & affixed my notarial seal the day & year above written.

Notary Public

My Commission Expires: _____

This plat of CAROL JEAN 2ND ADDITION has been submitted to and approved by the Wichita-Sedgwick County Metropolitan Area Planning Commission, Wichita, Kansas. Dated this _____ day of _____, 1981.

Chairman

Secretary
Robert A. Lakin

This plat approved & all dedications shown hereon are accepted by the City Commission of the City of Wichita, Kansas. Dated this _____ day of _____, 1981.

Mayor
Robert G. Knight

City Clerk
Donald C. Gisick

This plat approved & all dedications shown hereon are accepted by the board of County Commissioners of Sedgwick County, Kansas. Dated this _____ day of _____, 1981.

Chairman
Donald E. Grogg

Commissioner
Jack Spratt

Commissioner
Tom Scott

Attest:

Dorothy E. White
County Clerk

Entered on transfer record this _____ day of _____, 1981.

County Clerk
Dorothy E. White

This is to certify that this instrument was filed for record in the Register of Deeds office at _____ M. on this _____ day of _____, 1981.

Register of Deeds
Betts F. McCarl

Deputy
Pat Kettler