

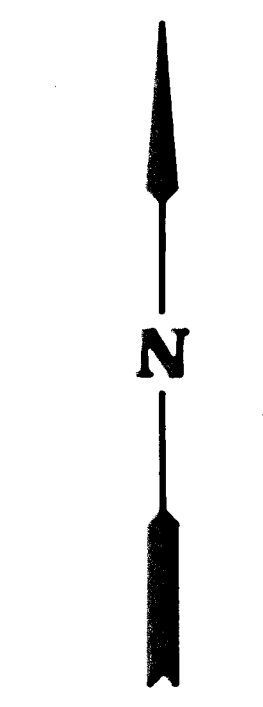
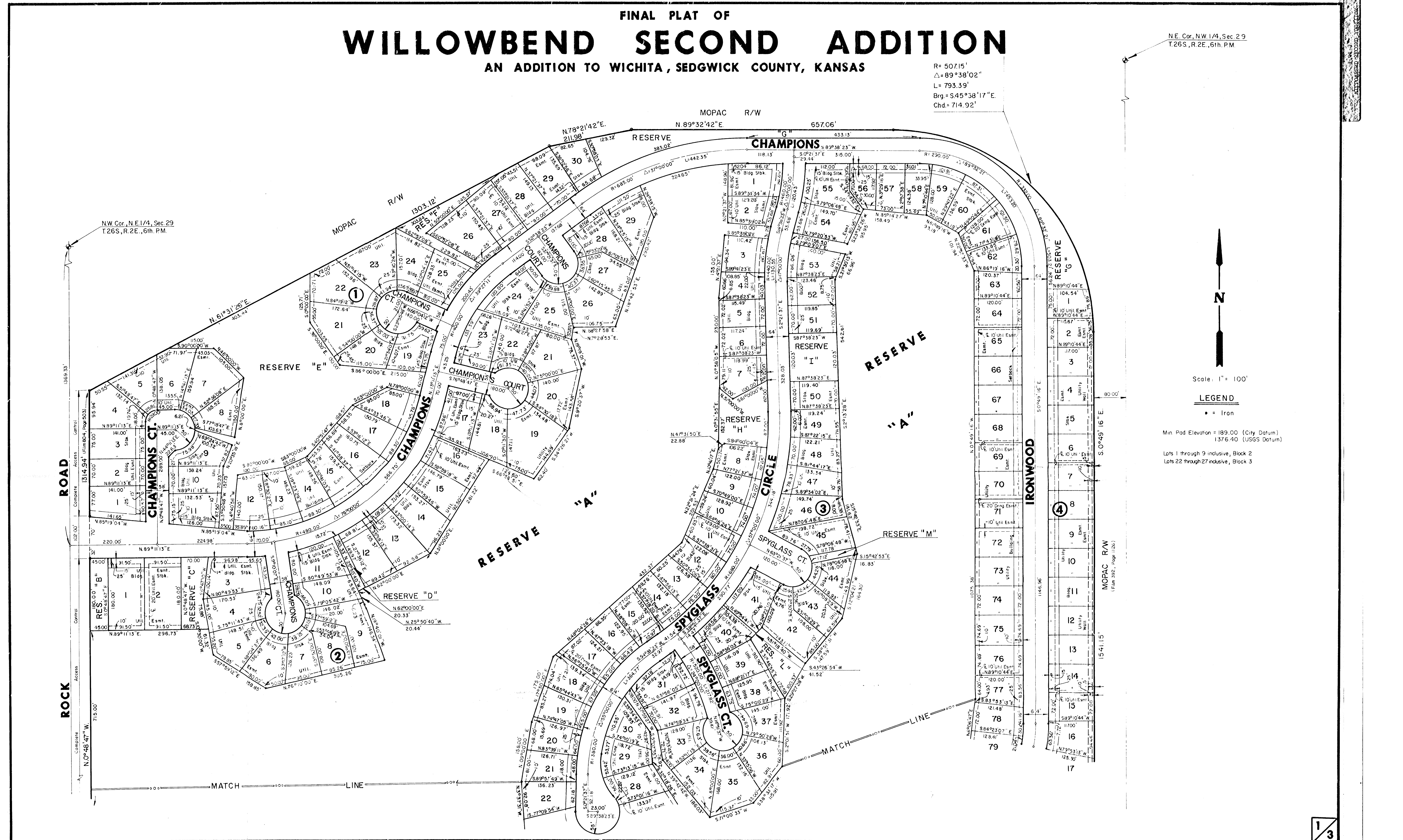
Willowbend 2nd Addition

FINAL PLAT OF WILLOWBEND SECOND ADDITION

AN ADDITION TO WICHITA, SEDGWICK COUNTY, KANSAS

N.E. Cor., N.W. 1/4, Sec. 29
T.26S., R.2E., 6th. PM

R= 507.15'
Δ= 89°38'02"
L= 793.39'
Brg.= S.45°38'17"E.
Chd.= 714.92'



Scale: 1" = 100'

LEGEND

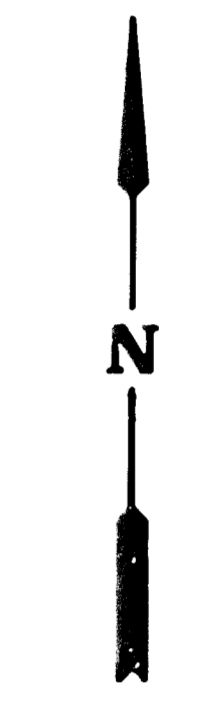
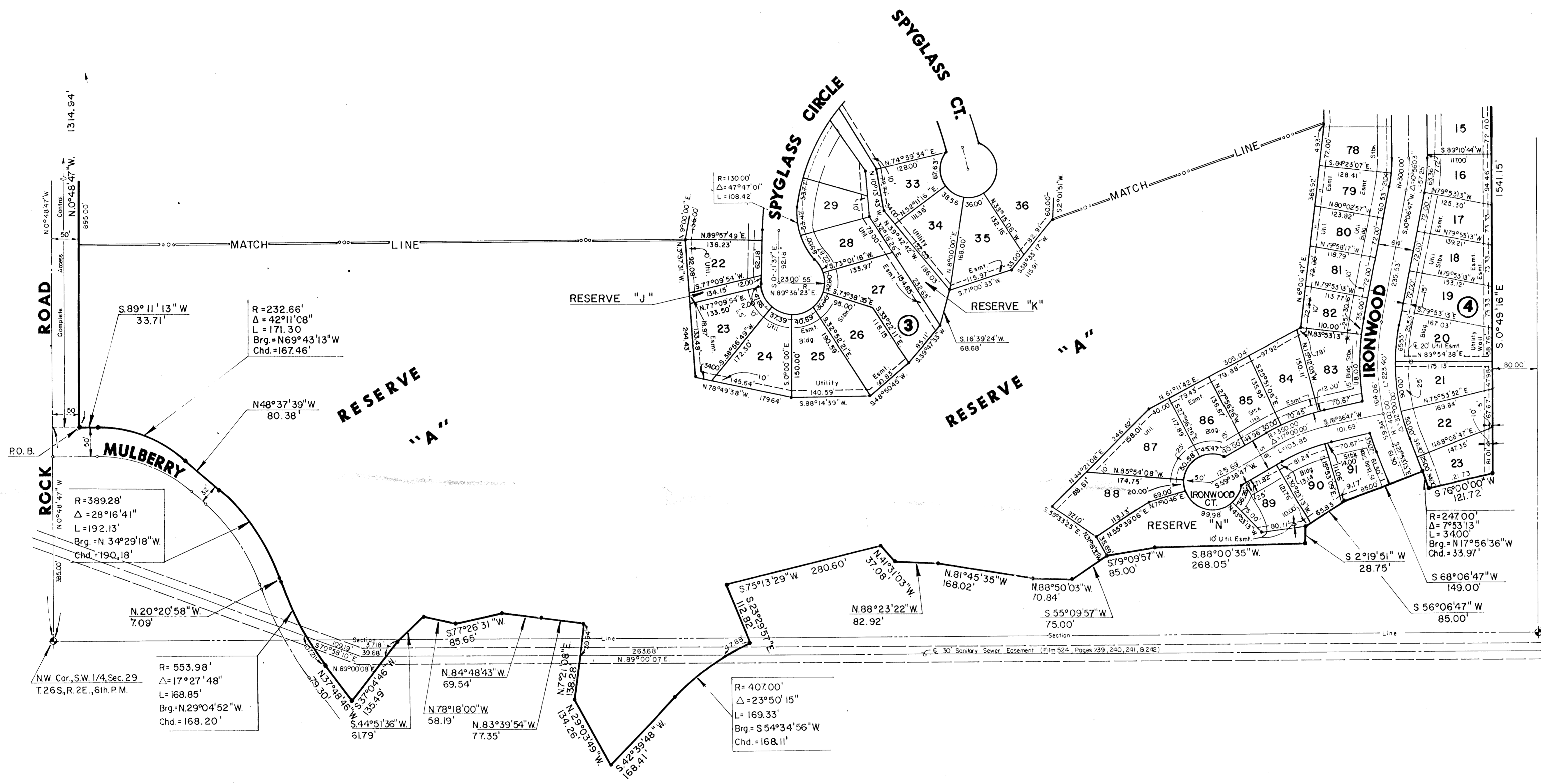
• = Iron

Min. Pad Elevation = 189.00 (City Datum)
1376.40 (USGS Datum)

Lots 1 through 9 inclusive, Block 2
Lots 22 through 27 inclusive, Block 3

FINAL PLAT OF WILLOWBEND SECOND ADDITION

AN ADDITION TO WICHITA, SEDGWICK COUNTY, KANSAS



Scale: 1" = 100'

LEGEND

• = Iron

Min. Pad Elevation = 189.00 (City Datum)
1376.40 (USGS Datum)

Lots 1 through 9 inclusive, Block 2
Lots 22 through 27 inclusive, Block 3

Center, Section 29
T 26S., R. 2E., 6th. P.M.

FINAL PLAT OF
WILLOWBEND SECOND ADDITION
 AN ADDITION TO WICHITA, SEDGWICK COUNTY, KANSAS

I, Kenneth H. Bengtson, a Civil Engineer in Kansas, do hereby certify that I have been in responsible charge of surveying and platting of "WILLOWBEND SECOND ADDITION", an addition to Wichita, Sedgwick County, Kansas, into Lots, Blocks, Reserves, and Streets, the same being accurately set forth in the accompanying plat and described herein:

A tract of land lying in the West Half of Section 29, Township 26 South, Range 2 East, of the 6th P.M. more particularly described as follows:

Commencing at the Northwest corner of the Southwest Quarter, Section 29, Township 26 South, Range 2 East, of the 6th P.M.; thence North along the West line of the Northwest quarter of said Section 29; bearing N 0° 48' 47" W, 385.00 feet; thence N 89° 11' 13" E, 50.00 feet to the point of beginning, said point also being the intersection of the East line of Rock Road and the North line of Willowbend First Addition; thence Northerly along the East line of Rock Road bearing N 0° 48' 47" W, 1314.94 feet to the South line of the MOPAC right-of-way; thence Northeasterly along said South line bearing N 61° 31' 26" E, 1303.12 feet; thence N 78° 21' 42" E, 211.98 feet; thence N 89° 32' 42" E, 657.06 feet to a point on a curve to the right having a central angle of 89° 38' 02", a radius of 507.15 feet, and a long chord of 714.92 feet bearing S 45° 38' 17" E; thence along said curve a distance of 793.39 feet; thence S 0° 49' 16" E, 1541.15 feet, thence S 76° 00' 00" W, 121.72 feet to a point on a curve to the left having a central angle of 7° 53' 13", a radius of 247.00 feet, and a long chord of 33.97 feet bearing N 17° 56' 36" W; thence along said curve a distance of 34.00 feet; thence S 68° 06' 47" W, 149.00 feet; thence S 56° 06' 47" W, 85.00 feet; thence S 2° 19' 51" W, 28.75 feet; thence S 88° 00' 35" W, 268.05 feet; thence S 79° 09' 57" W, 85.00 feet; thence S 55° 09' 57" W, 75.00 feet; thence N 88° 50' 03" W, 70.88 feet; thence N 81° 45' 35" W, 168.02 feet; thence N 88° 23' 22" W, 82.92 feet; thence N 41° 31' 03" W, 37.08 feet; thence S 75° 13' 29" W, 280.60 feet; thence S 23° 29' 57" E, 112.82 feet to a point on a curve to the left having a central angle of 23° 50' 15", a radius of 407.00 feet, and a long chord of 168.11 feet bearing S 54° 34' 56" W; thence along said curve a distance of 169.33 feet; thence S 42° 39' 48" W, 168.41 feet; thence N 29° 03' 49" W, 134.26 feet; thence N 7° 21' 08" E, 138.28 feet; thence N 83° 39' 51" W, 77.35 feet; thence N 84° 48' 43" W, 69.54 feet; thence S 77° 26' 31" W, 85.65 feet; thence N 78° 18' 00" W, 58.19 feet; thence S 44° 51' 06" W, 61.79 feet; thence S 37° 04' 46" W, 135.49 feet; thence N 37° 48' 46" W, 79.30 feet to a point on a curve to the right having a central angle of 17° 27' 48", a radius of 553.98 feet, a long chord of 168.20 feet bearing N 29° 04' 52" W; thence along said curve a distance of 168.85 feet; thence N 20° 20' 58" W, 7.09 feet to a point on a curve to the left having a central angle of 28° 16' 41", a radius of 389.28 feet, a long chord of 190.18 feet bearing N 34° 29' 18" W; thence along said curve a distance of 192.13 feet; thence N 48° 37' 39" W, 80.38 feet to a point on a curve to the left having a central angle of 42° 11' 08", a radius of 232.66 feet, a long chord of 167.46 feet bearing N 69° 43' 13" W; thence along said curve a distance of 171.30 feet; thence S 89° 11' 13" W, 33.71 feet to the point of beginning.

I hereby certify that the details of this plat are correct to the best of my knowledge and belief this 11 day of June, 1986.

Kenneth H. Bengtson
 Kenneth H. Bengtson, P.E.
 Mid-Kansas Engineering Consultants, P.A.
 3500 N. Rock Road, Building #800
 Wichita, KS 67226



Know all men by these presents that we the undersigned property owners of the land as above set forth in the Civil Engineer's Certificate, have caused the same to be surveyed and platted into Lots, Blocks, Reserves, and Streets, the same to be known as "WILLOWBEND SECOND ADDITION", an addition to Wichita, Sedgwick County, Kansas. The streets are hereby dedicated to and for the use of the public. Reserves B through N inclusive are platted for the construction and maintenance of public utilities, drainage, and open spaces and shall be owned and maintained by the Homeowners Association. Reserve A is platted for construction of a golf course, cart paths, recreation, construction and maintenance of public utilities, drainage, buffer zones, and open spaces and shall be owned and maintained by the Golf Course Association. Easements for the construction and maintenance of public utilities and drainage, as indicated on the accompanying plat, are hereby granted. The wall easement is hereby platted for the purpose of construction and maintenance of a private wall. All abutters rights of access to and from Rock Road over and across the west line of Reserve A "WILLOWBEND SECOND ADDITION" are hereby granted to the City of Wichita, Kansas. Minimum pad elevation on Lot 1 through 9 inclusive, Block 2 and Lots 22 through 27 inclusive, Block 3, shall be as indicated on the face of the plat.

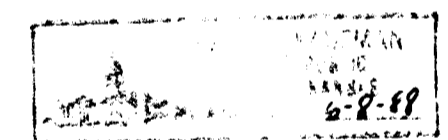
GOLF COURSES OF AMERICA, INC.

Frank A. Mills
 Frank A. Mills, President

STATE OF KANSAS)
) ss:
 SEDGWICK COUNTY)

Be it remembered that on this 11th day of June, 1986, before me a Notary Public in and for said State and County, came Golf Courses of America, Inc. by Frank A. Mills, President, to me personally known to be the same person who executed the foregoing instrument of writing and duly acknowledged the execution of the same. In testimony whereof I have hereunto set my hand and affixed my notarial seal the day and year above written.

Robert L. Kaufman, Notary Public
 My Appointment Expires: June 8, 1988



We, the Bank Audi (USA), mortgagees on the above described property, do hereby consent to the plat of "WILLOWBEND SECOND ADDITION".

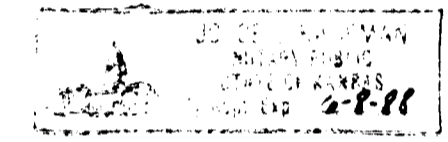
BANK AUDI (USA)

By: Phillip S. Frick
 Phillip S. Frick, Attorney-in-Fact

STATE OF KANSAS)
) ss:
 SEDGWICK COUNTY)

Be it remembered that on this 11th day of June, 1986, before me a Notary Public in and for said State and County, came Phillip S. Frick, Attorney-in-Fact, on behalf of Bank Audi (USA), to me personally known to be the same person who executed the foregoing instrument of writing and duly acknowledged the execution of the same. In testimony whereof I have hereunto set my hand and affixed my notarial seal the day and year above written.

Robert L. Kaufman, Notary Public
 My Appointment Expires: June 8, 1988



This plat of "WILLOWBEND SECOND ADDITION" has been submitted to and approved by the Wichita-Sedgwick County Metropolitan Area Planning Commission, Wichita, Kansas.

Dated this 6th day of MARCH, 1986.

WICHITA-SEDGWICK COUNTY METROPOLITAN AREA PLANNING COMMISSION

David Bayouth, Vice-Chairman

Michael E. Lindebak, Secretary

This plat approved and all dedications shown hereon, if any, accepted by the City Commission of the City of Wichita, Kansas, this 11 day of June, 1986.

Tony Casado, Mayor

Donald C. Gistick, City Clerk

Entered on transfer record this 11 day of June, 1986.

Don Wright, County Clerk

STATE OF KANSAS)
) ss:
 SEDGWICK COUNTY)

This is to certify that this instrument was filed for record in the Register of Deeds office this 11 day of June, 1986.

Pat Kettler, Register of Deeds

Ed Resa, Deputy