

N 89°39'05"E

2653.58'

210

24100

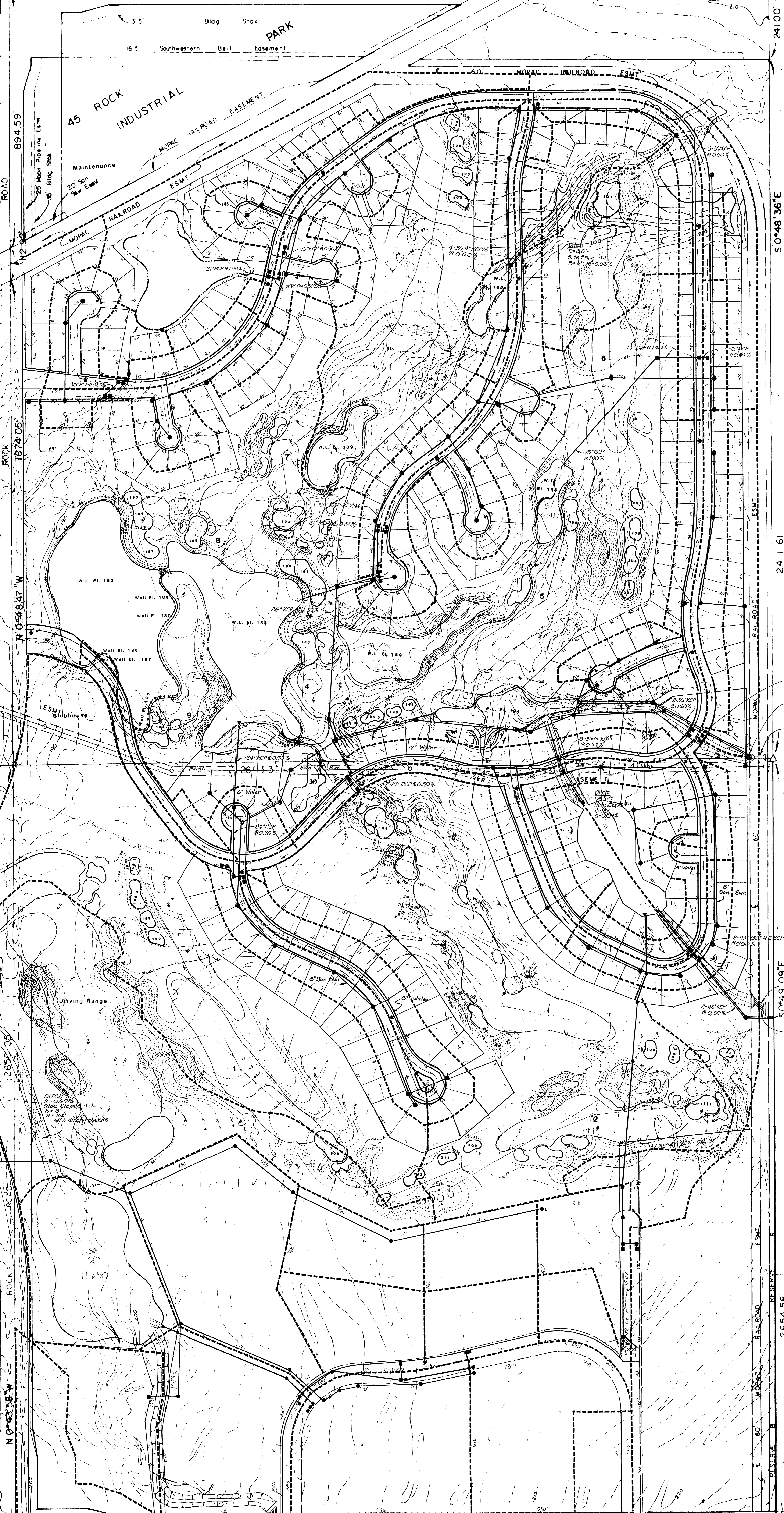
241161

265458

265458

265712'

S 89°07'52"W



1-3'6" RCB @
1-3'x7' RCB @ 1.20%

Reinf Conc. Flow
Splitter Structure

Exist. 4'x7' RCB
30' Long w/wing walls
E.E. Elev. 202.33
W.E. Elev. 201.72

Ditch
D=22"
Side Slope 4:1
8'-12' 3'-0.60%

Area = 92 AC.
C = 0.5
Tc = 30 min.
Q = 313 cfs

Ditch
D=22"
Side Slope 4:1
8'-10' 3'-0.04%

Exist. 4'x6' RCB
48' Long w/wing walls
E.E. Elev. 205.87
W.E. Elev. 205.44

Reinf Conc. Flow
Splitter Structure

Prop. Double 42" RCB's
86' Long w/wing walls

Area = 82 AC.
C = 0.7
Tc = 30 min.
Q = 390 cfs

PROP.
DOUBLE
3'x4' RCB
w/WING WALLS

DITCH
D=22"
Side Slope 4:1
8'-25' w/ply rocks

GP-2
019 BT-3

DRAINAGE AND UTILITY CONCEPT
MULBERRY GOLF COURSE COMMUNITY

Grading
Mulberry Golf Course
Wichita, Kansas
Golf Course Designed by: Tom Weist
Plans Prepared by: Jay Morris
Engineering by: 10820 East 4
Mid-Kansas Engineering Consultants, PA
Tulsa, Ok 74
Land Planning by: Sheet 4 of

