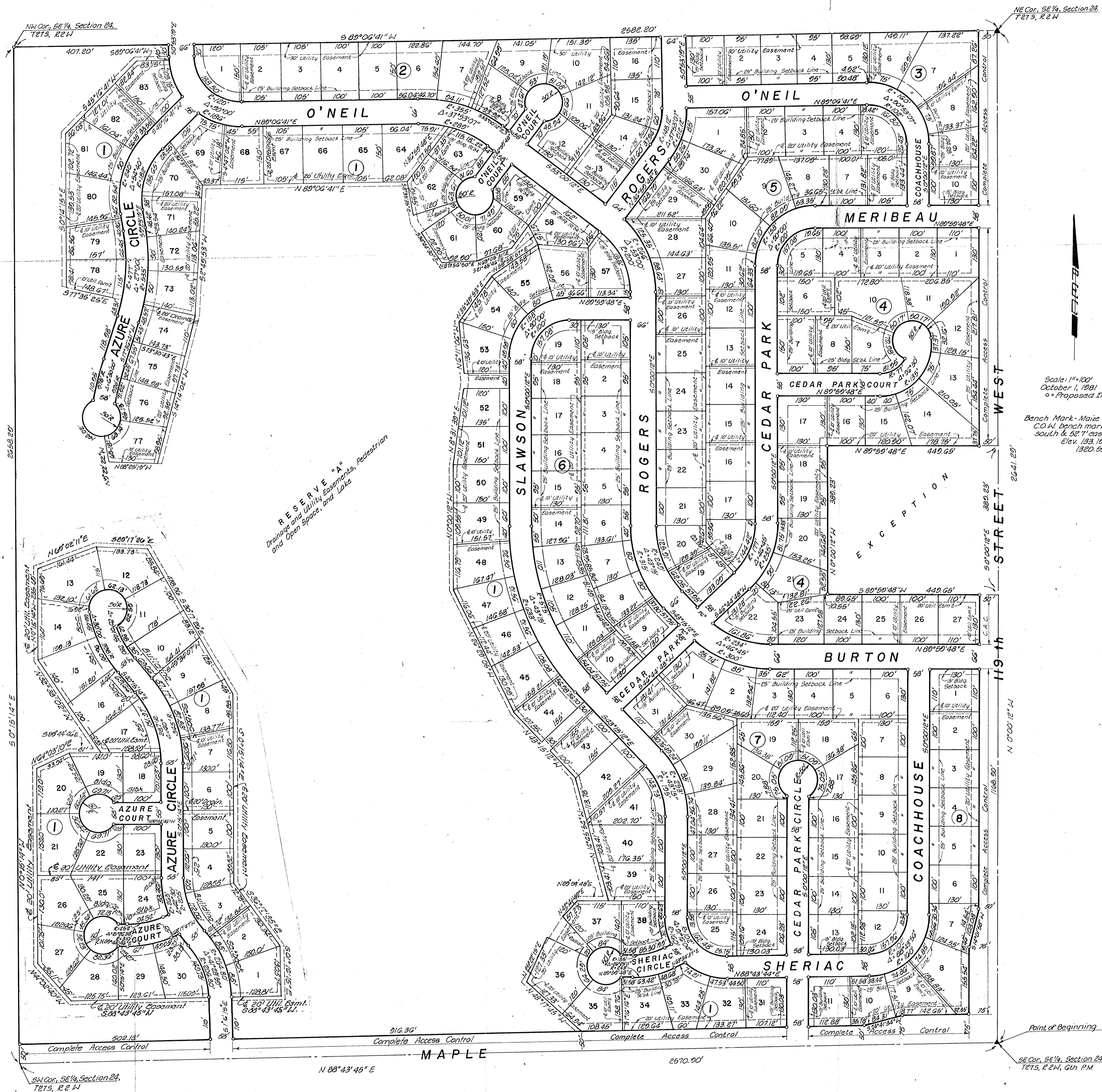


# WEST LAKE ESTATES

WICHITA, SEDGWICK COUNTY, KANSAS



NE Cor. SE 1/4, Section 24, T21S, R2W

NW Cor. SE 1/4, Section 24, T21S, R2W

Scale: 1"=100'  
October 1, 1981  
Proposed Iron

Bench Mark - Maize Rd & Maple,  
C.O.M. bench mark also, 43.5'  
south & 52.7' east of bench,  
Elev. 133.19 City,  
1320.50 MSL

Point of Beginning  
SE Cor. SE 1/4, Section 24, T21S, R2W, 6th PM

SW Cor. SE 1/4, Section 24, T21S, R2W

N 88° 43' 45" E

MAPLE