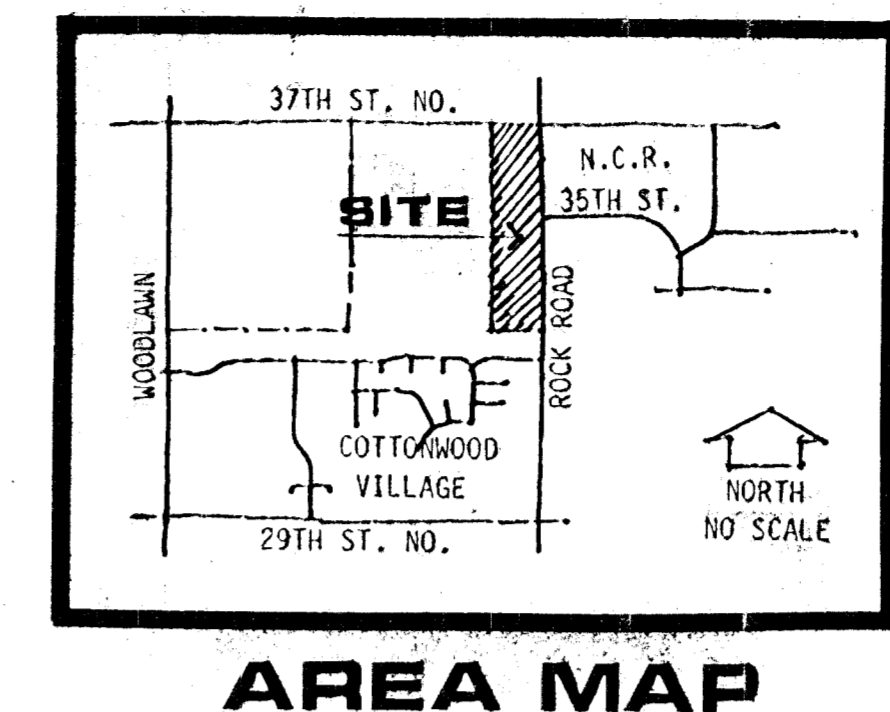
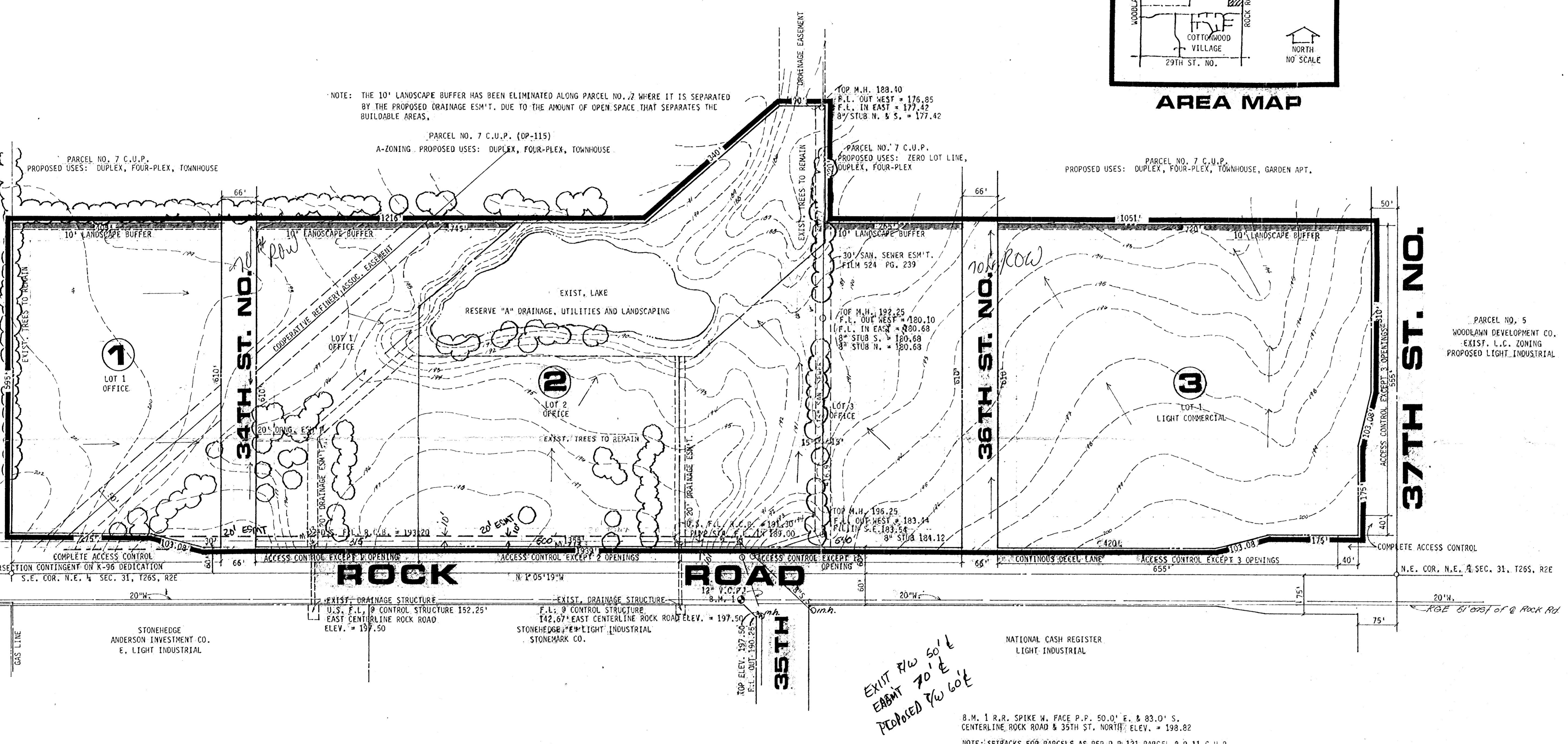


**PRELIMINARY PLAT**

**COMOTARA OFFICE CENTER**

WOODLAWN DEVELOPMENT COMPANY, P.O. BOX 8128, WICHITA, KS 67208

100' 50' 0' 50' 100' 200' 300'



date Feb 15, 1983  
rev. Nov 4, 1983

sheet title  
Preliminary Plat

project  
Comotara Office Center

sheet  
of

**BILL G. YUNG DESIGN**  
8225 E. 35TH ST. NORTH, WICHITA, KS. 67226  
316-683-5567