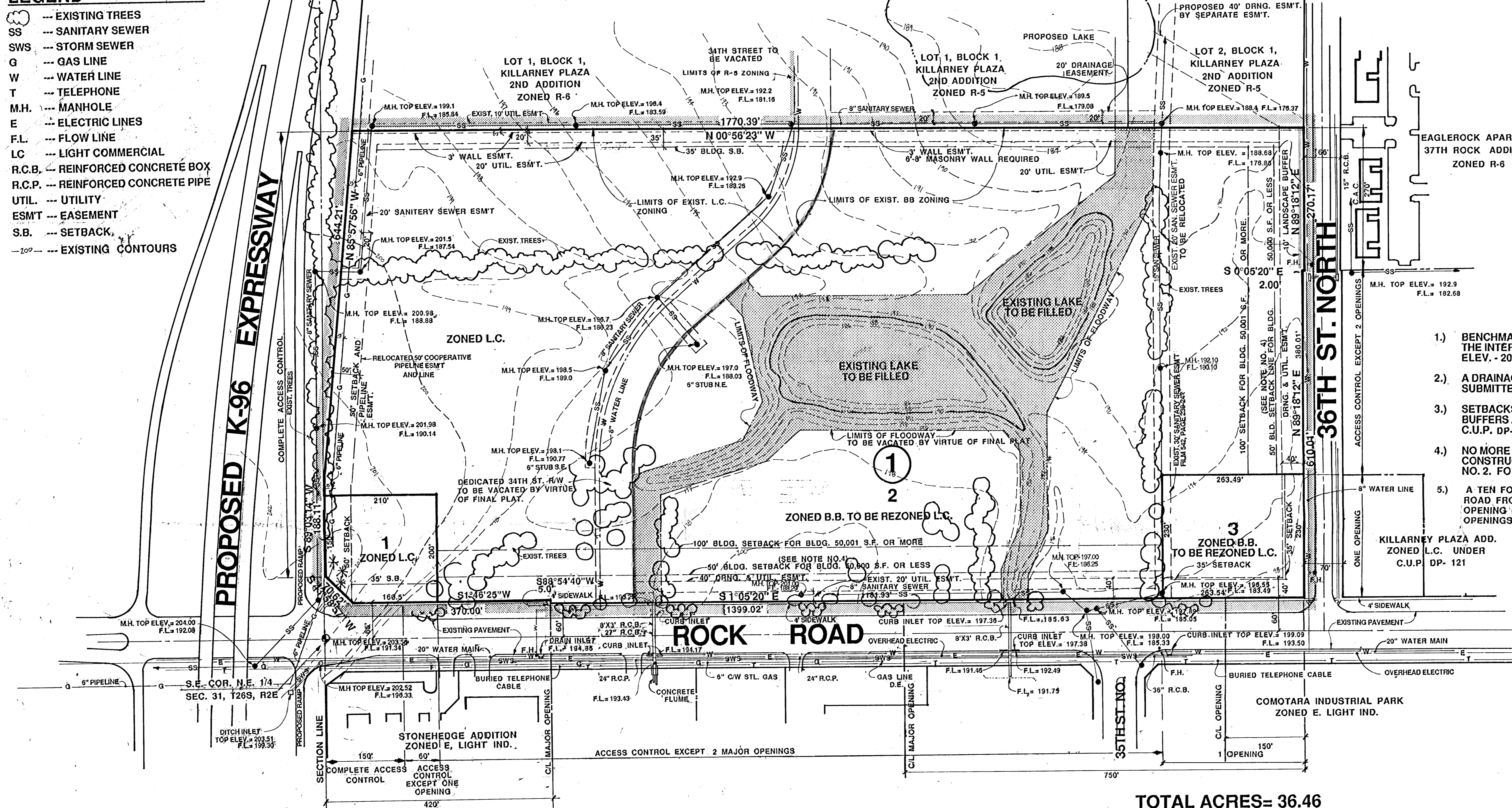


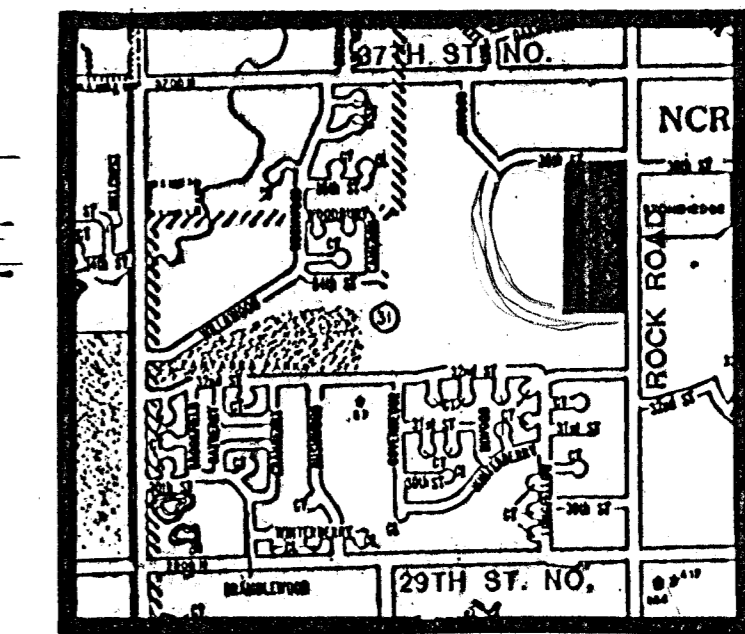
LEGEND

- EXISTING TREES
- SS --- SANITARY SEWER
- SWS --- STORM SEWER
- G --- GAS LINE
- W --- WATER LINE
- T --- TELEPHONE
- M.H. --- MANHOLE
- E --- ELECTRIC LINES
- F.L. --- FLOW LINE
- LC --- LIGHT COMMERCIAL
- R.C.B. --- REINFORCED CONCRETE BOX
- R.C.P. --- REINFORCED CONCRETE PIPE
- UTIL. --- UTILITY
- ESMT --- EASEMENT
- S.B. --- SETBACK
- - - - - EXISTING CONTOURS

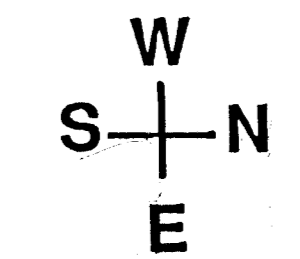


NOTES:

- 1.) BENCHMARK: CITY OF WICHITA B.M. DISC., 44' S. AND 48' W. OF THE INTERSECTION OF ROCK ROAD AND 37TH ST. NO. ELEV. - 204.1
- 2.) A DRAINAGE CONCEPT PLAN SHALL BE PREPARED AND SUBMITTED BY M.K.E.C.
- 3.) SETBACKS, REQUIRED MASONRY WALLS AND LANDSCAPE BUFFERS ARE AS PER PROPOSED COMOTARA POWER CENTER C.U.P. DP-195
- 4.) NO MORE THAN TWO (2) BUILDINGS EACH SHALL BE CONSTRUCTED AT THE 50' BLDG. SETBACK LINE FOR PARCEL NO. 2. FOR ROCK ROAD AND 36 TH ST. NO.
- 5.) A TEN FOOT DECEL LANE SHALL BE GUARANTEED ALONG ROCK ROAD FROM THE SOUTH PROPERTY LINE TO THE SOUTH MAJOR OPENING (APPROX. 420') AND FROM EACH OF THE MAJOR OPENINGS NORTH 300' WITH A 175' TAPER TO EXIST. CURB.



LOCATION MAP
NO SCALE



SCALE : 1"=100'-0"
CONTOUR INTERVAL = 1'

TOTAL ACRES= 36.46
TOTAL SQ. FT.= 1,587,598

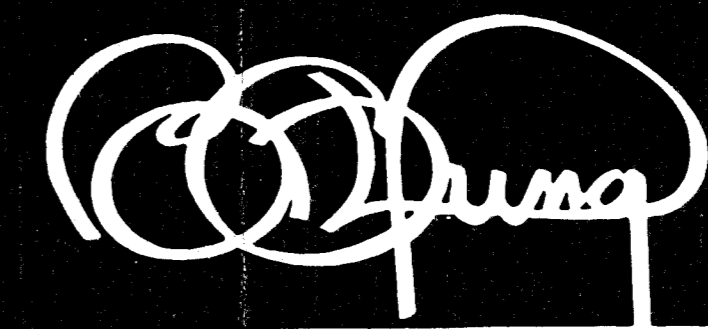
PRELIMINARY PLAT UNDER PROPOSED COMOTARA POWER CENTER C.U.P. DP-195

COMOTARA POWER CENTER

OWNER: NORTHROCK REALTY PARTNERS 575 FOURTH FINANCIAL CENTER, WICHITA, KS., 67202

DATE: OCT. 19, 1989 MARCH 2, 1990

100' 50' 0' 50' 100' 200'



BILL G. YUNG DESIGN
4912 E. 29TH STREET NORTH WICHITA, KS 67220 316-683-5567