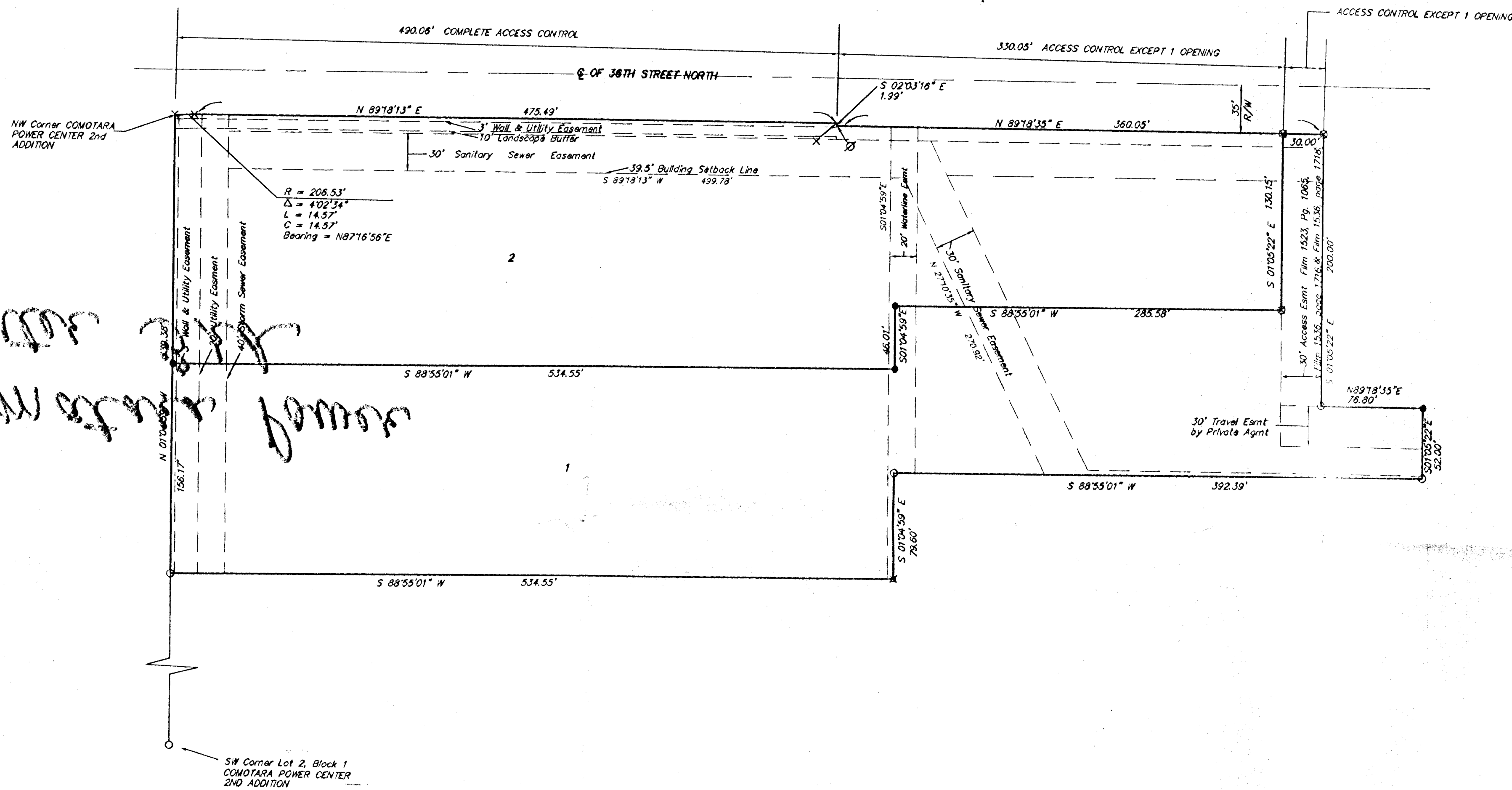


**FINAL PLAT OF
COMOTARA POWER CENTER THIRD ADDITION
WICHITA, SEDGWICK COUNTY, KANSAS**



Handwritten notes:
 36th Street
 Power Center
 1st Addition

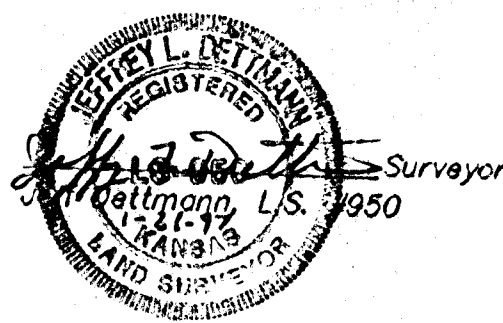
NOTES:

1. Property is subject to further restrictions per Community Unit Plan DP-195
2. Property was previously part of a lot split filed on Film 1634, page 373.
3. Property subject to blanket drainage easement per Film 1624, page 530.
4. Drainage Easement on Film 1523, page 1064 and Film 1523, page 1719 for the benefit of a portion of Lot 2, Block 1, Comotara Power Center Addition.
5. Property subject to reciprocal easement agreement at Film 1536, page 1693.
6. Utilities may cross the wall and utility easements.

State of Kansas } ss
 County of Sedgwick }

I, the undersigned licensed land surveyor in aforesaid county and state, do hereby certify that, under the supervision of the undersigned, we have surveyed and platted "COMOTARA POWER CENTER 3RD ADDITION", Wichita, Sedgwick County, Kansas and that the accompanying plat is a true and correct exhibit of the property surveyed, described as follows: A tract of land being a portion of Lot 2, Block 1, Comotara Power Center 2nd Addition to the City of Wichita, Sedgwick County, Kansas and described as follows: Commencing at the Southwest corner of Lot 2, Block 1, Comotara Power Center 2nd Addition to the City of Wichita, Sedgwick County, Kansas; thence N01°04'59"W a distance of 386.70 feet to the Point of Beginning of the tract to be described; thence, continuing N01°04'59"W a distance of 339.38 feet to be described; thence, along the right hand curve of 36th Street North; thence along said South Right of Way line on a curve to the right having a radius of 206.53 feet, a long chord bearing of N87°16'56"E and a long chord distance of 14.57 feet, an arc distance of 14.57 feet; thence continuing along said South Right of Way line, N89°18'13"E a distance of 475.49 feet; thence continuing along said South Right of Way line, S02°03'16"E a distance of 1.99 feet; thence continuing along said South Right of Way line, N89°18'35"E a distance of 360.05 feet; thence S01°05'22"E a distance of 200.00 feet; thence N89°18'35"E a distance of 76.80 feet; thence S01°05'22"E a distance of 52.00 feet; thence S88°55'01"W a distance of 392.39 feet; thence S01°04'59"E a distance of 79.60 feet; thence S88°55'01"W a distance of 534.55 feet to the Point of Beginning.

All being situated in the NE 1/4 of Sec. 31, Twp. 26-S, R-2-E, of the 6th P.M., Sedgwick County, Kansas. Existing public easements and dedications being vacated by virtue of K.S.A. 12-512(b).



Know all men by these presents that we, the undersigned have caused the land described in the Surveyors certificate to be platted into Lots to be known as "Comotara Power Center Third Addition", Wichita, Sedgwick County, Kansas. The utility easements are hereby granted as indicated for the construction and maintenance of all public utilities. All abutters rights of access to or from Rock Road and 36th Street North are hereby granted to the City of Wichita, Kansas provided, however, that Lot 1 shall have access to 36th Street North at one location and Lot 2 shall have access to 36th Street North at one location. Said access locations to 36th Street North shall be determined by the City Engineer of the City of Wichita, Kansas.

Box Development, L.L.C.,
 a Kansas limited liability company
 Michael J. Boyd, Member

State of Kansas } ss
 Sedgwick County }
 The foregoing instrument was acknowledged before me, this 19th day of December, 1996, by Michael J. Boyd, Member of Box Development, L.L.C., a Kansas Limited Liability Company, to me personally known to be the same person who executed the foregoing instrument of writing and duly acknowledged the execution of same.

TERESA J. ROUSHKOLB
 Notary Public - State of Kansas
 Not. Expires 12/31/2000
 My App't. Exp. 12/31/2000

State of Kansas } ss
 City of Wichita }

This plat of "COMOTARA POWER CENTER THIRD ADDITION", Wichita, Sedgwick County, Kansas, has been submitted to and approved by the Wichita-Sedgwick County Metropolitan Area Planning Commission, Wichita, Kansas.
 Dated this 19th day of December, 1996.
 Wichita-Sedgwick County Metropolitan Area Planning Commission.

John C. Frye, Chair
 Marvin S. Krout, Secretary

State of Kansas } ss
 City of Wichita }

This plat approved and all dedications shown hereon accepted by the City Council of the City of Wichita, Kansas, this 11th day of February, 1997.

Bob Knight, Mayor
 Pat Burnett, City Clerk

Entered on transfer record this _____ day of _____, 1997.

James Alford, County Clerk

State of Kansas } ss
 Sedgwick County }

This is to certify that this plat has been filed for record in the office of the Register of Deeds, this _____ day of _____, 1997, at _____ o'clock _____, and is duly recorded.

Larry L. Consolver, Register of Deeds

Michael D. Hurtt, Deputy

State of Kansas } ss
 County of Sedgwick }

We, the undersigned, holders of a mortgage on the above described property, do hereby consent to this plat of "COMOTARA POWER CENTER THIRD ADDITION", Wichita, Sedgwick County, Kansas.
 Bank IV, a Kansas Corporation

State of Kansas } ss
 Sedgwick County }
 The foregoing instrument acknowledged before me this _____ day of _____, 1997, by _____, of Bank IV, on behalf of the corporation.

TERESA J. ROUSHKOLB
 Notary Public - State of Kansas
 Not. Expires 12/31/2000