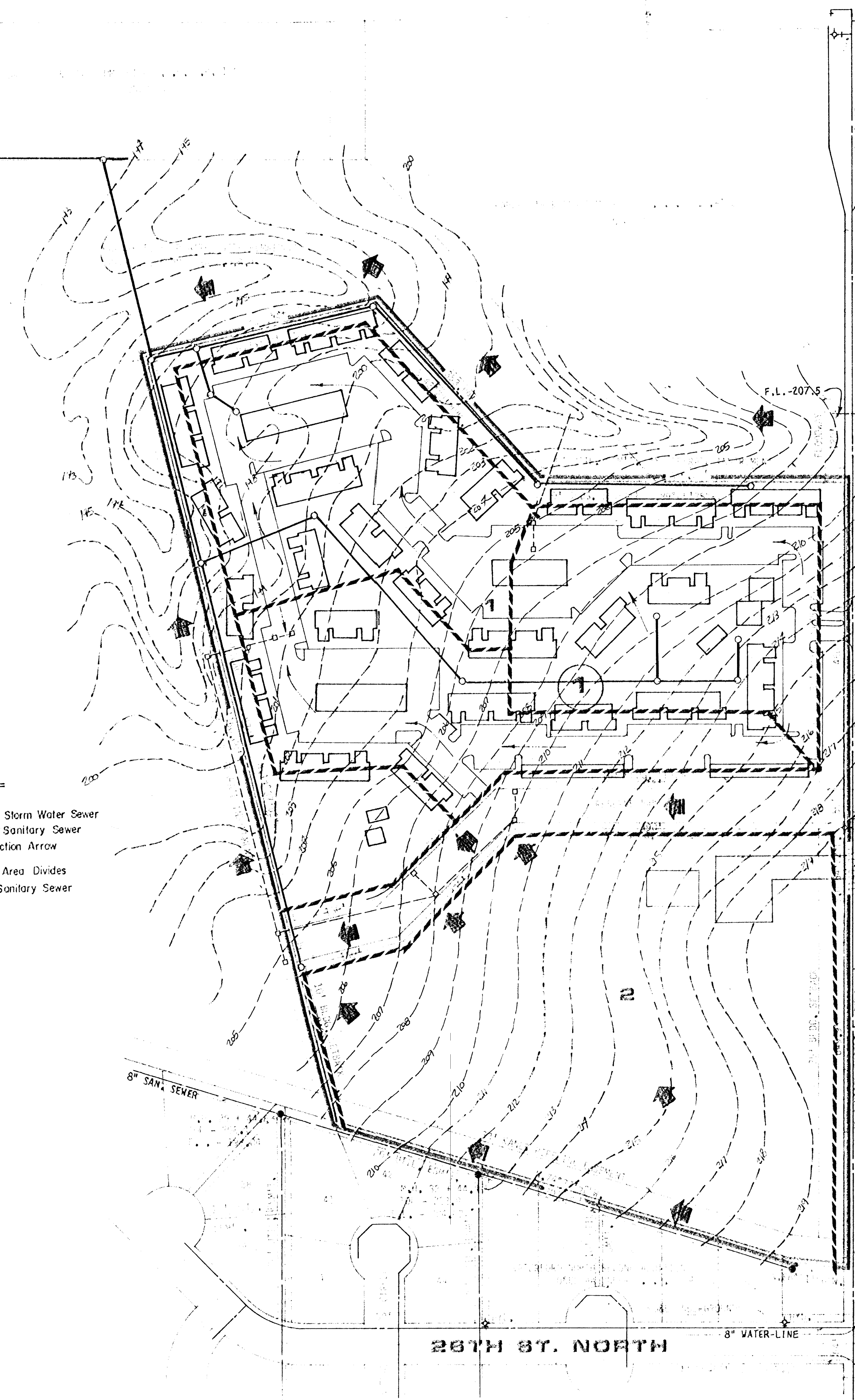


29TH. STREET NORTH

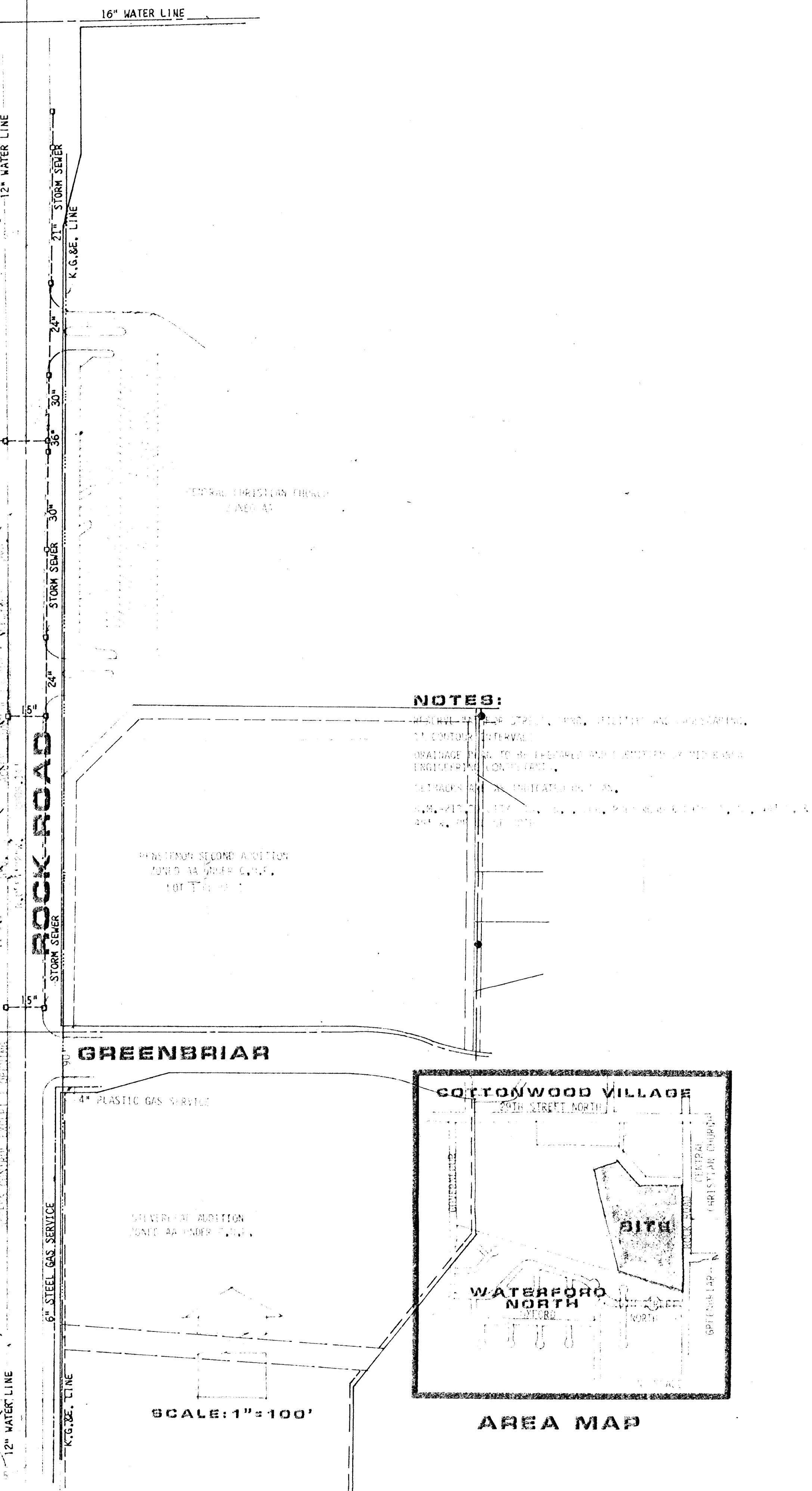
STREET NORTH

STREET NORTH

N.E. COR. N.E. 1/4 SEC. 6, T27S, R2E

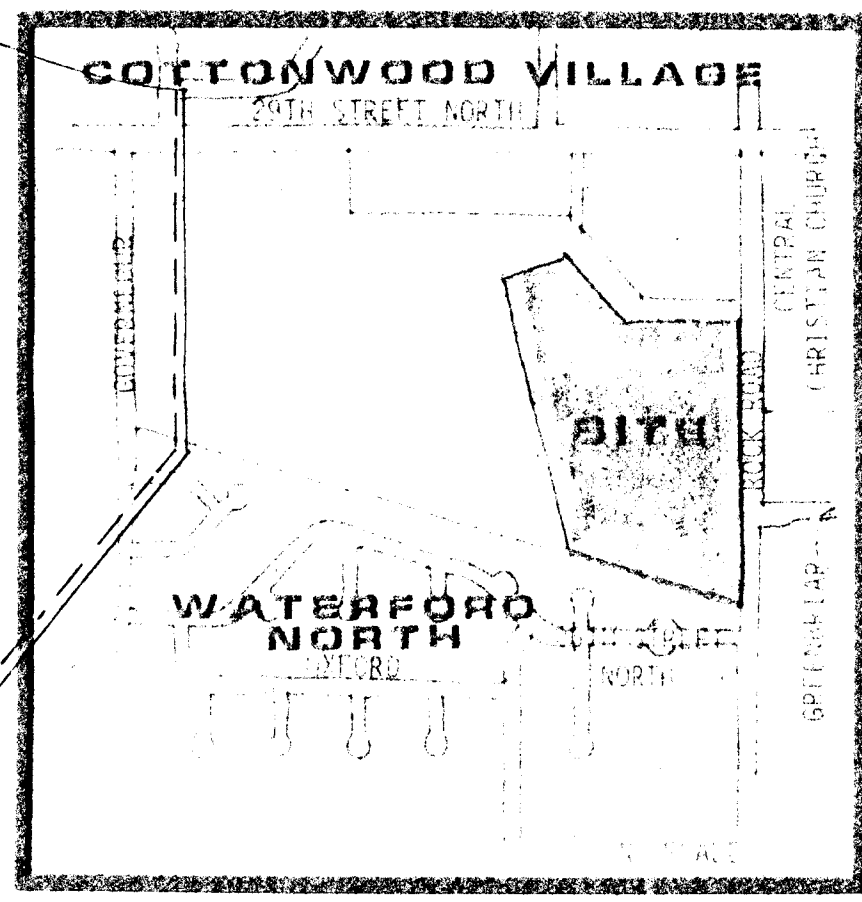


- LEGEND**
- Proposed Storm Water Sewer
 - Proposed Sanitary Sewer
 - Flow Direction Arrow
 - - - Drainage Area Divides
 - - - Existing Sanitary Sewer



NOTES:

1. ALL UTILITIES SHOWN ARE BASED ON FIELD SURVEY AND RECORD PLANS.
2. CONTOUR INTERVAL IS 2 FEET.
3. DRAINAGE IS TO BE ESTABLISHED AND MAINTAINED IN ACCORDANCE WITH LOCAL ORDINANCES.
4. DETAILS OF CONNECTIONS TO EXISTING UTILITIES ARE SHOWN ON SEPARATE SHEETS.
5. ALL UTILITIES ARE TO BE INSTALLED IN ACCORDANCE WITH LOCAL ORDINANCES.

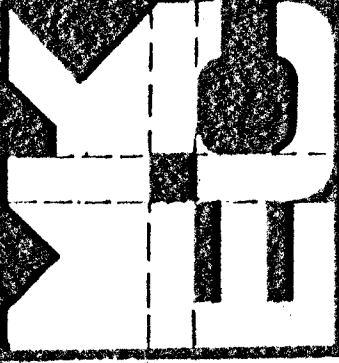


SCALE: 1"=100'

DRAINAGE CONCEPT FOR COMOTARRA RETIREMENT CENTER ADD.

DESIGNED BY: COMOTARRA CONSULTANTS, INC., 2504 N. ROCK ROAD, #200, WICHITA, KS 67261.

Design: KHB	Sheet: 1
Drawn by: DLM	of: 1
Checked by: KHB	
Date: April, 1984	
Scale:	



MID-KANSAS ENGINEERING CONSULTANTS PA
240 NORTH ROCK ROAD
SUITE 100
WICHITA, KANSAS 67206
682-6561

sheet title
PRELIMINARY PLAN

sheet project
COMOTARRA RETIREMENT CENTER

sheet of