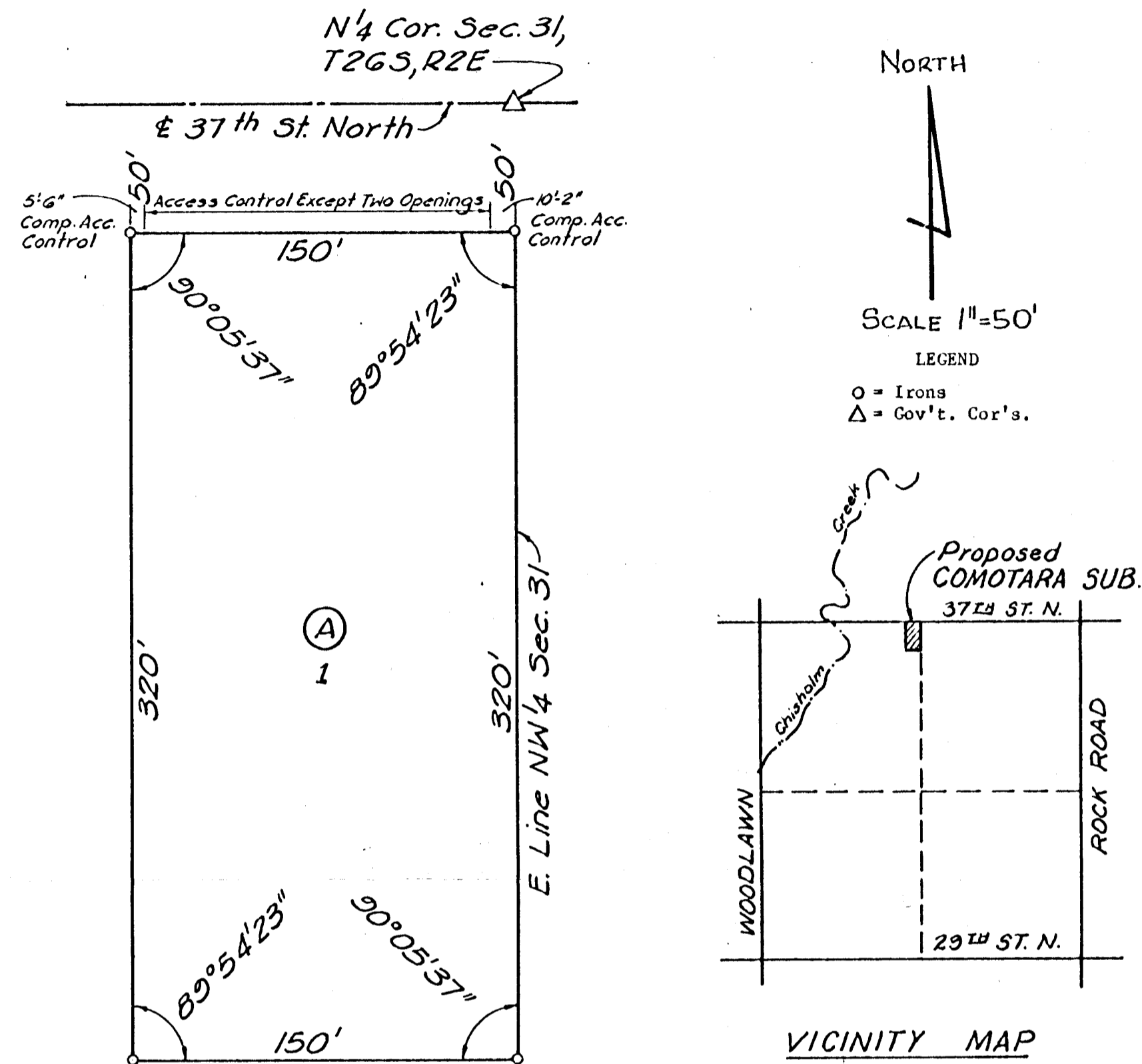


COMOTARA SUBSTATION

SEDGWICK COUNTY, KANSAS



State of Kansas)
 County of Sedgwick) s.s. I, Wilmer Freund, a Licensed Professional Engineer in the aforesaid county and state, do hereby certify that I have surveyed and platted COMOTARA SUBSTATION, Sedgwick County, Kansas, into a block, lot and a street, and that the accompanying plat is a true and correct exhibit of the property surveyed, described as: beginning Thirty (30) feet South of the Northeast Corner of the North One-half of the Northwest Quarter of Section 31, Township 26 South, Range 2 East of the 6th. P.M.; thence South along the East line of said North One-half of the Northwest Quarter a distance of Three Hundred Forty (340) feet; thence West parallel with the North line of said North One-half of the Northwest Quarter a distance of One Hundred Fifty (150) feet; thence North parallel with the East line of said North One-half of the Northwest Quarter a distance of Three Hundred Forty (340) feet; thence East One Hundred Fifty (150) feet to the point of beginning, containing One and Seventeen Hundredths (1.17) acres, more or less, Sedgwick County, Kansas.

Wilmer Freund, P.E.

Know all men by these presents that we, the undersigned, owners of the land described in the engineer's certificate, have caused the same to be surveyed and platted into a block, lot, and a street, the same to be known as COMOTARA SUBSTATION, Sedgwick County, Kansas. Said street is hereby dedicated to and for the use of the public. All abutters rights of access to or from Thirty-seventh Street North over or across the North line of Lot 1 are hereby granted to the appropriate governing body, provided, however, that said Lot 1 shall have access to Thirty-seventh Street North at two locations on all but the West five feet-six inches and the East ten feet two inches of said North line of said Lot 1, both as shall be determined by the appropriate governing body.

KANSAS GAS AND ELECTRIC COMPANY, A CORPORATION

W.B. Walker, Secretary

Wilson K. Cadman, President

State of Kansas)
 County of Sedgwick) s.s. The foregoing instrument was acknowledged before me this day of 19 by Wilson K. Cadman, President, Kansas Gas and Electric Company, a Corporation, on behalf of the Corporation.

My Appointment Expires:

Notary Public

This plat has been submitted to and approved by the Wichita-Sedgwick County Metropolitan Area Planning Commission, Wichita, Kansas, this day of , 19 .

Robert A. Lakin, Secretary

William J. Goebel, Chairman

This plat approved and all dedications shown hereon accepted by the Board of Commissioners of the City of Wichita, Kansas, this day of , 19 .

Donald C. Gissick, City Clerk

Robert G. Knight, Mayor

This plat approved and all dedications shown hereon accepted by the Board of County Commissioners of Sedgwick County, Kansas, this day of , 19 .

Everett Patrick, Chairman

Tom Scott, Commissioner

ATTEST:

Dorothy K. White, County Clerk

Donald E. Gragg, Commissioner

Entered on transfer record this day of , 19 .

Dorothy K. White, County Clerk

State of Kansas)
 County of Sedgwick) s.s. This is to certify that this instrument was filed for record in the Register of Deeds Office at O'Clock .M., on the day of , 19 .

Pat Kettler, Deputy

Bette F. McCart, Register of Deeds

258-K-201