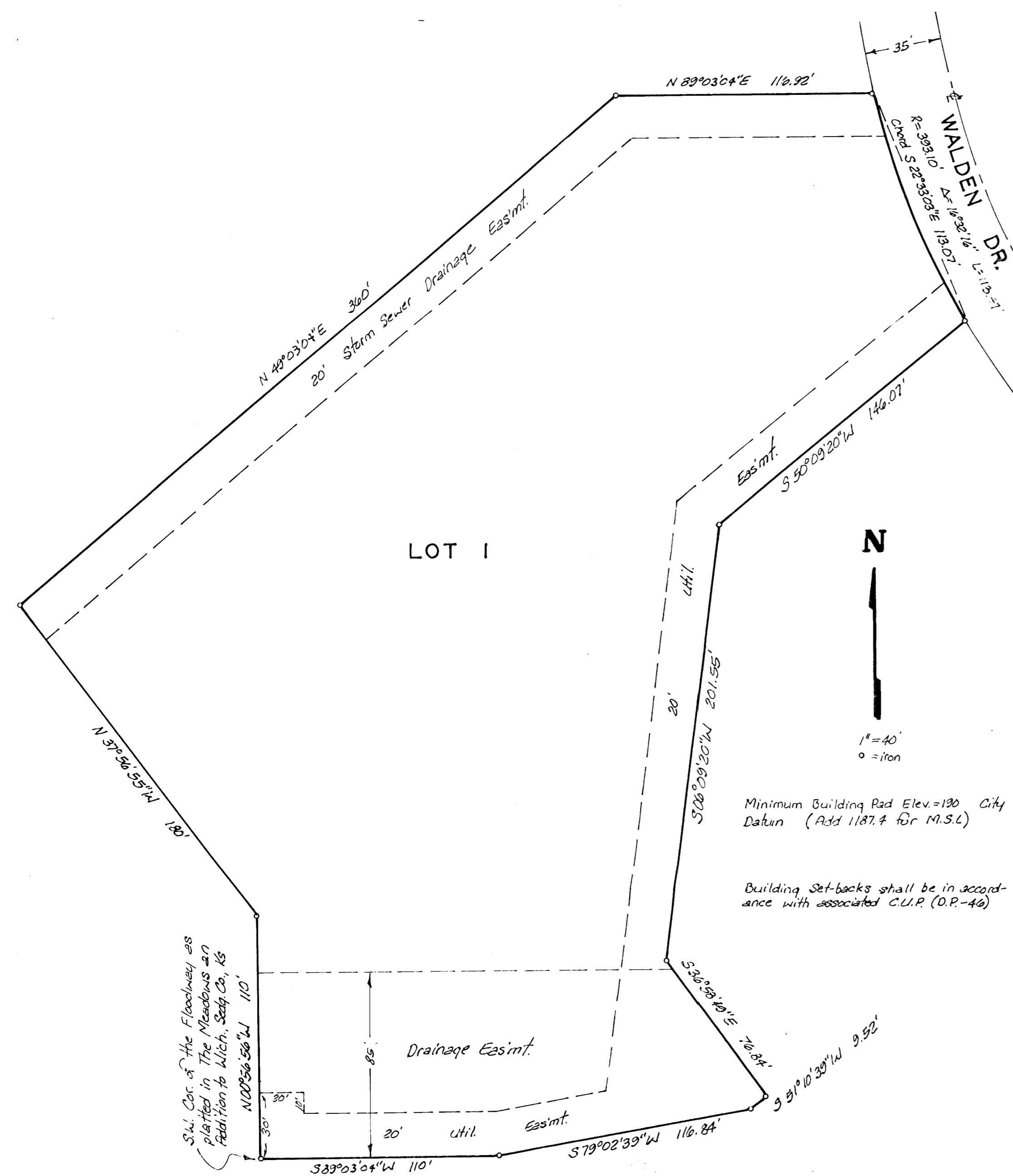


# COMOTARA VILLAGES SECOND ADDITION

WICHITA, KANSAS.



State of Kansas, Sedgewick County, ss. We, Beughman Company, P.A. Surveyors in aforesaid county and state do hereby certify that we have surveyed and platted "COMOTARA VILLAGES, SECOND ADDITION", Wichita, Kansas and that the accompanying plat is a true and correct exhibit of the property surveyed, being a replat of Lots 1, 2, 3, 4, 5, 6, 7, 8, 9, 10, 11, 12, 13, 14, 15, 16, 17, 18, 19, 20 The Meadows An Addition to Wichita, Sedgewick County, Kansas and that portion of the Reserve lying within the following described tract: Beginning at the S.W. corner of the Floodway platted in said Addition; thence along the boundary of said Addition bearing N09°56'56\"W, 110 feet; thence N37°56'55\"W, 180 feet; thence N49°03'04\"E, 360 feet; thence N89°03'04\"E, 116.84 feet; thence along a curve to the left, having a central angle of 16°32'14\" and a radius of 393.10 feet, a length of 113.47 feet and a chord 113.07 feet long bearing S22°33'03\"E to the northerly corner of Lot 21 in said Addition; thence along the back line of Lots 21 through 26 bearing S30°09'20\"W, 146.07 feet; thence S06°09'20\"W, 201.55 feet; thence S36°58'49\"E, 76.84 feet; thence S51°10'39\"W, 2.52 feet to a point on the south line of said Addition; thence S79°02'39\"W, 116.84 feet; thence S89°03'04\"W, 110 feet to beginning. The utility easements and Floodway, being vacated by virtue of K.S.A. 12-512(b).

All being situated in the SW1/4 of Sec. 6 Twp. 27S R.2E of the 6th P.M., Sedgewick County, Kansas.

2/27/85  
Date

Beughman Company, P.A.  
John E. Lundblad, Surveyor  
John E. Lundblad

Know all men by these presents that we, the undersigned, have caused the land described in the surveyors certificate to be platted into a Lot to be known as "COMOTARA VILLAGES SECOND ADDITION", Wichita, Kansas. The utility easements are hereby granted as indicated for the construction and maintenance of all public utilities. No building shall be constructed below a minimum pad elevation of 1920 City Datum. The drainage easements are hereby granted for drainage purposes. The maintenance of the 85-foot drainage easement shall be the responsibility of the owner of Lot 1.

Alfred A. Caro  
Louise A. Caro

State of Kansas, ss. The foregoing instrument acknowledged before me this 21st day of February 1985 by Alfred A. Caro and Louise A. Caro, his wife.

My Appt. Exp. 12 May 1985  
Mark A. Seiff, Notary Public

This plat of "COMOTARA VILLAGES SECOND ADDITION", Wichita, Kansas, has been submitted to and approved by the Wichita-Sedgewick County Metropolitan Area Planning Commission, Wichita, Kansas.

Dated this 10th day of January 1985.  
Wichita-Sedgewick County Metropolitan Area Planning Commission.  
William J. Ortol, Vice-Chairman  
Robert A. Lakin, Secretary

This plat approved and all dedications shown hereon accepted by the Board of Commissioners of the City of Wichita, Kansas, this 19th day of MARCH 1985.

Donald C. Hsieh, Mayor  
Donald C. Hsieh, City Clerk

Entered on transfer record this day of 1985.

Don Wright, County Clerk

State of Kansas, ss. This is to certify that this plat has been filed for record in the office of the Register of Deeds, this day of 1985, at o'clock M; and is duly recorded.

Pat Kettler, Register of Deeds  
Ed Resa, Deputy