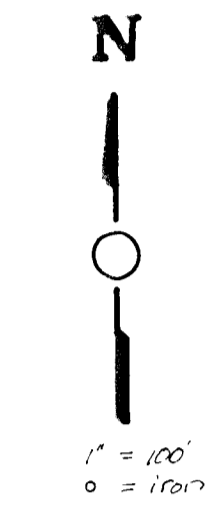
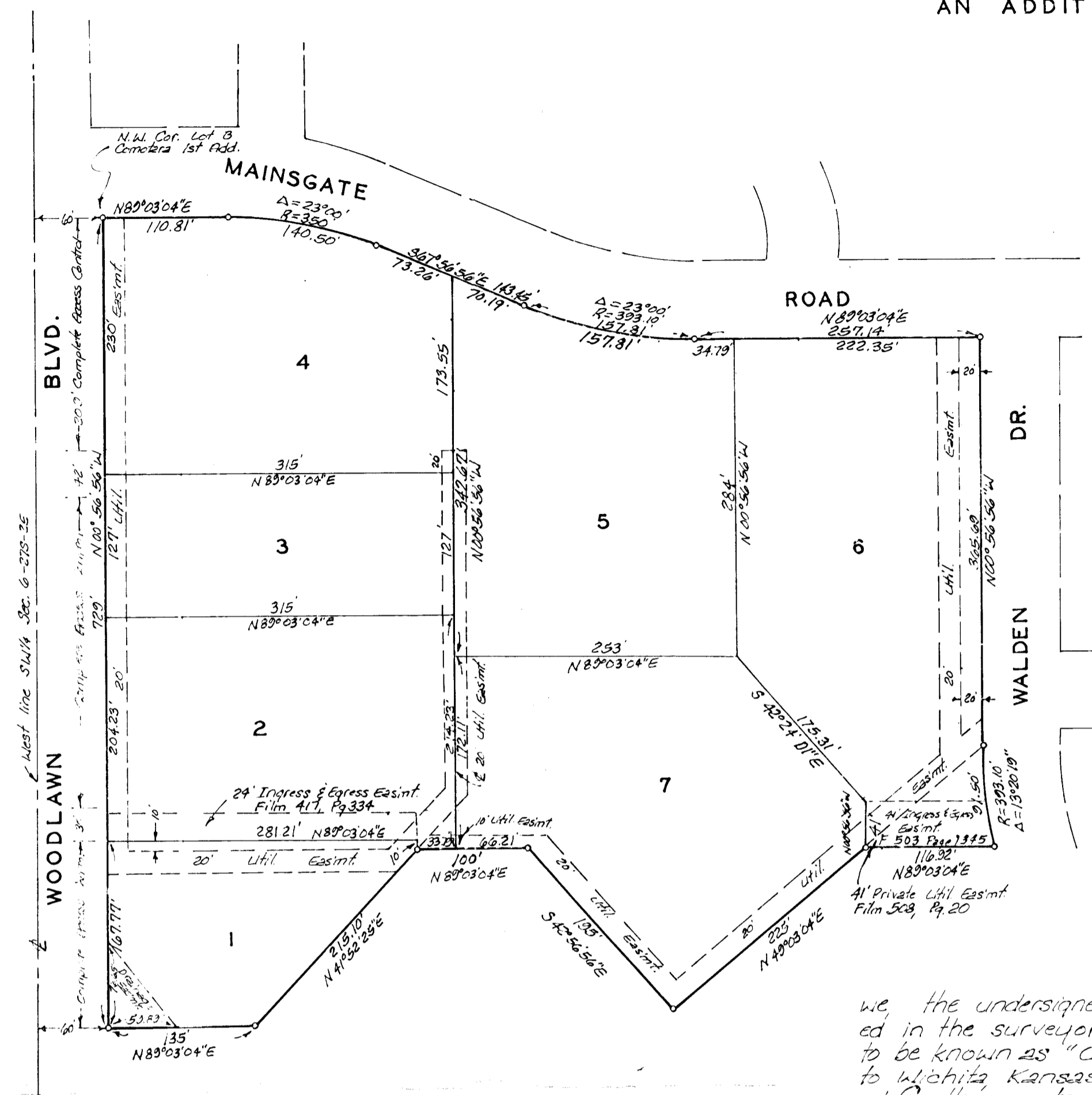


COMOTARA VILLAGES

AN ADDITION TO WICHITA, KANSAS.



Minimum Bdy. Rod Elev. 100.0 City Datum
Building setbacks shall be in accordance with the associated C.U.P. (DP-46)

NOTE:
K&E Affidavit for existing underground service line on Lot 2, is on file with the Register of Deeds (Film 309, P. 1220)

Know all men by these presents, that we, the undersigned, have caused the land described in the surveyor's certificate to be platted into lots to be known as "COMOTARA VILLAGES", an Addition to Wichita, Kansas. Utility easements are hereby granted for the construction and maintenance of all public utilities. No building shall be constructed below a minimum pad elevation of 100.0 City Datum. All drainage rights of access to or from Woodlawn Blvd. over and across west line of Lot 1, the west line of the north 174.23 feet of Lot 2, the west line of the south 102 feet of Lot 3, and the West line of the north 200 feet of Lot 4 are hereby granted to the City of Wichita, Kansas. The drainage easement is hereby granted for drainage purposes.

State of Kansas, Sedgewick County, ss. We, Baughman Company, P.A., Surveyors in aforesaid county and state do hereby certify that we have surveyed and platted "COMOTARA VILLAGES", an Addition to Wichita, Kansas, and that the accompanying plat is a true and correct exhibit of the property surveyed described as and being a replat of Lot 3, Comotara First Addition to Wichita, Sedgewick County, Kansas, all being situated in the 34 1/4 of Sec. 6, Twp. 27 S, R. 2 E.

Baughman Company, P.A.
 William L. Kerber, Surveyor

We, the undersigned holders of a mortgage on a portion of the above described property, do hereby consent to this plat of "COMOTARA VILLAGES", an Addition to Wichita, Kansas.

Haysville State Bank
 President
 Lutheran Brotherhood, a corporation
 Asst. Vice President

State of Kansas, Sedgewick County, ss. The foregoing instrument was acknowledged before me, this 19th day of 1981, by R.C. Brown, Mayor of The City of Wichita, a Municipal Corporation.

Notary Public
 My Comm. Exp. 12-31-87

Alfred A. Caro, Louise A. Caro
 Colby B. Sandlian, Genevieve B. Sandlian
 Ray C. Trimble, Dorothy A. Trimble
 Phillip G. Barkett

Jayhawk One, Ltd., a Kansas Limited Partnership
 Alfred A. Caro, General Partner
 The City of Wichita, a Municipal Corporation
 Mayor R.C. Brown, City Clerk
 Donald C. Gaisick, Attest

State of Kansas, Sedgewick County, ss. The foregoing instrument acknowledged before me, this 19th day of August 1981, by Alfred A. Caro and Louise A. Caro, his wife and Colby B. Sandlian and Genevieve B. Sandlian, his wife and Ray C. Trimble and Dorothy A. Trimble, his wife and Phillip G. Barkett, a single person and Alfred A. Caro, General Partner of Jayhawk One, Ltd., a Kansas Limited Partnership.

Notary Public
 My Comm. Exp. 12-31-87

I, Colby B. Sandlian, holder of a mortgage on a portion of the above described property do hereby consent to this plat of "COMOTARA VILLAGES", an Addition to Wichita, Kansas.

Colby B. Sandlian
 State of Kansas, Sedgewick County, ss. The foregoing instrument was acknowledged before me, this 19th day of August 1981, by Colby B. Sandlian.
 My App't. Exp. 12-31-87
 Notary Public
 Velma Bader

This plat of "COMOTARA VILLAGES", an Addition to Wichita, Kansas, has been submitted to and approved by the Wichita-Sedgewick County Metropolitan Area Planning Commission, Wichita, Kansas. Dated this 28th day of August 1980.

William L. Kerber, Chairman
 Robert A. Lakin, Secretary

This plat approved and all dedications shown hereon accepted by the Board of Commissioners of the City of Wichita, Kansas, this 11th day of August 1981.

R.C. Brown, Mayor
 Donald C. Gaisick, City Clerk

This plat approved and all dedications shown hereon accepted by the Board of Commissioners of Sedgewick County, Kansas, this 19th day of August 1981.

Jack G. Carr, Chairman
 Tom Scott, Commissioner
 Donald E. Gregg, Commissioner
 Dorothy K. White, County Clerk

Entered on transfer record this 19th day of August 1981.
 Dorothy K. White, County Clerk

State of Kansas, Sedgewick County, ss. This is to certify that this plat has been filed for record in the office of the Register of Deeds this 19th day of August 1981, at 10:00 a.m. and is duly recorded.

Bette F. Mearns, Register of Deeds
 Pat Kellner, Deputy

State of Kansas, Sedgewick County, ss. The foregoing instrument acknowledged before me, this 12th day of August 1981, by Lawrence E. Remond, President of Haysville State Bank.

Notary Public
 My Comm. Exp. 12-31-87

State of Minnesota, County of Hennepin, ss. The foregoing instrument acknowledged before me, this 18th day of August 1981, by Leona Grondahl, Asst. Vice Pres. of Lutheran Brotherhood, a corporation.

Notary Public
 My Comm. Exp. 4-29-87

COMOTARA VILLAGES