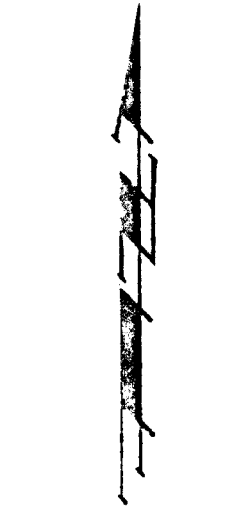


PRELIMINARY PLAT
COMOTARA VILLAGE 3RD ADDITION
 WICHITA, SEDGWICK COUNTY, KANSAS



(P) = Plotted
 (M) = Measured

● = Iron Nail
 ✕ = Cross Hair
 * = 1/2" Boylston Colour Set

NOTE: All Setbacks are per C.U.P. (D.P. - 46)

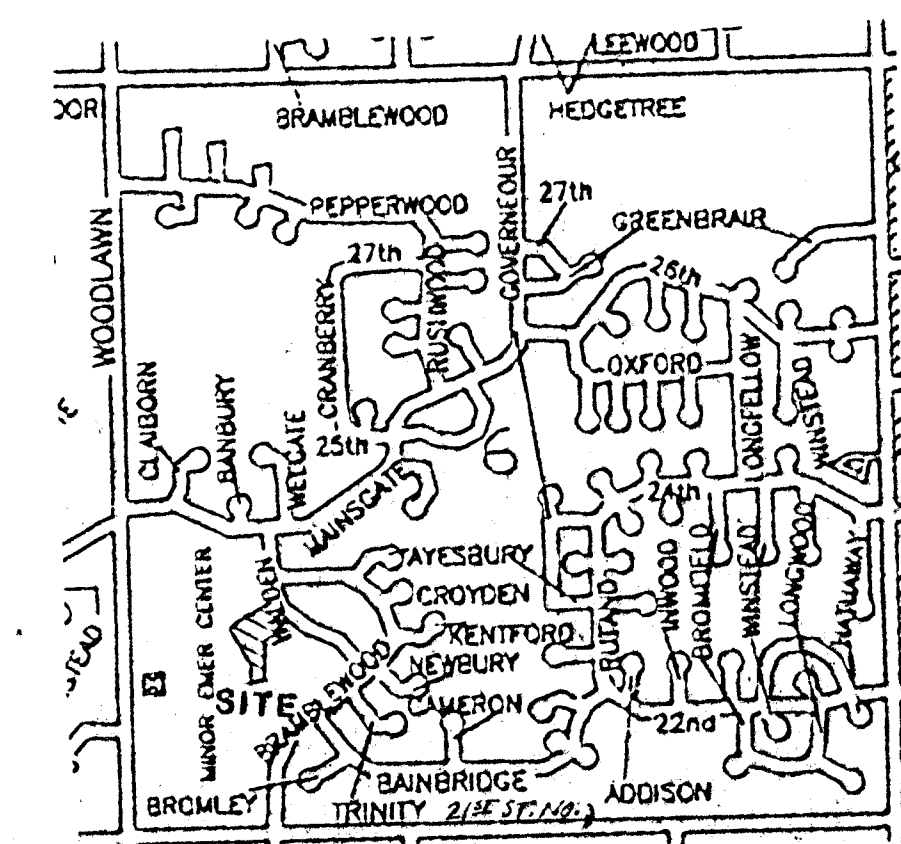
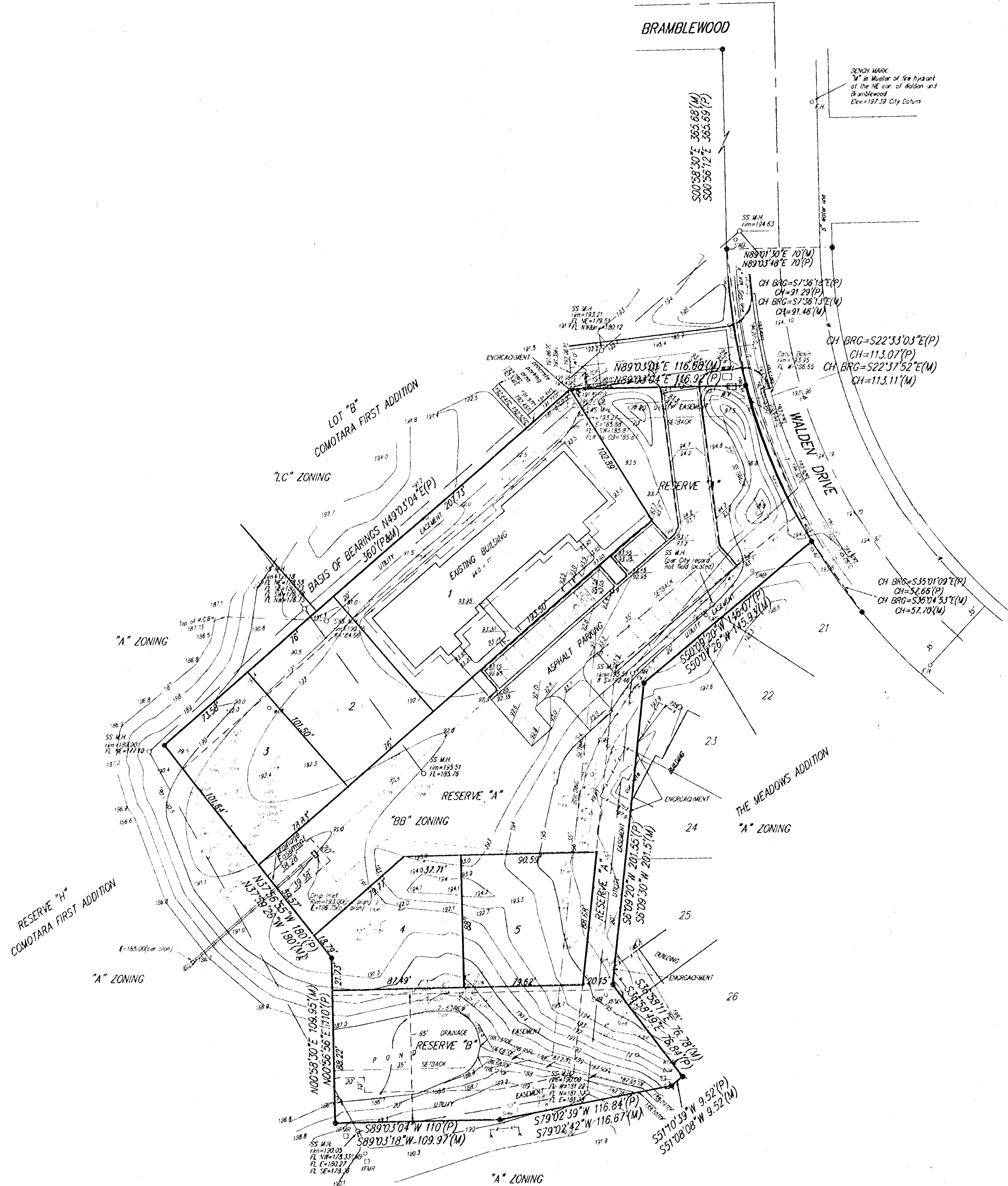
LEGEND -

SS M.H. = Sanitary Sewer Manhole
 S.S. M.H. = Storm Sewer Manhole
 W.V. = Water Valve
 S.W. = Sewer Water Inlet
 S.W. = Sewer Water Inlet
 T.V. = Catch Tank/Trap Box
 R.M.E. = R.O. Box
 T.C. = Top of Curb
 T.F. = Top of Floor
 T.S. = Top of Sill
 T.B. = Top of Catch Basin
 R.C.B. = Reinforced Concrete Box

Legal Description:
 A N/4th of Lot 1, Comotara Villages Second Addition

Owner:
 Alcon Development
 Attn: Chuck Caro
 2400 N. Woodlawn
 Wichita, KS 67220
 Ph: 316-681-0523

Benchmark:
 "M" in Monitor on fire hydrant
 at the NE Cor. of Walden and
 Bramblewood
 Elev. = 197.39 City Datum



VICINITY MAP