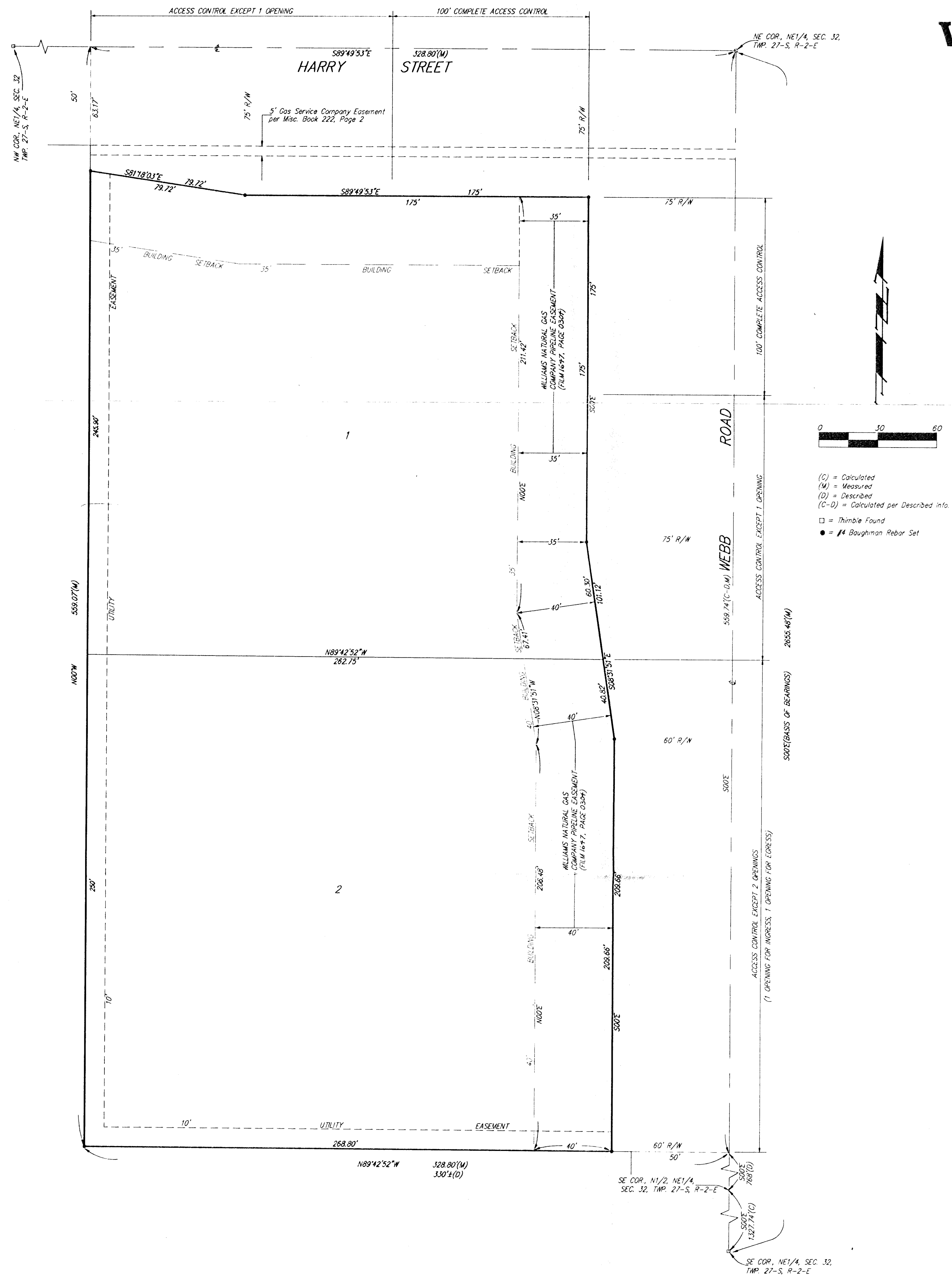


CONOCO ADDITION WICHITA, SEDGWICK COUNTY, KANSAS



State of Kansas) SS We, Baughman Company, P.A., Surveyors in
 Sedgwick County) do hereby certify that we have surveyed
 and platted "CONOCO ADDITION", Wichita, Sedgwick County, Kansas,
 and that the accompanying plat is a true and correct exhibit of the
 property surveyed, described as follows: Part of the east 10 acres
 of the N1/2 of the NE1/4 of Sec. 32, Twp. 27-S, R-2-E of the 6th P.M.,
 Sedgwick County, Kansas, described as beginning 768 feet north of the
 SE Corner of the N1/2 of said NE1/4; thence west, 330 feet, more or
 less, to the west line of said east 10 acres; thence north to the north
 line of said NE1/4; thence east to the NE Corner of said NE1/4; thence
 south to beginning.

Existing public easements and dedications being vacated by virtue
 of K.S.A. 12-512(b).
 Baughman Co., P.A.

This plat of "CONOCO ADDITION", Wichita,
 Sedgwick County, Kansas has been submitted to and approved by the
 Wichita, Sedgwick County Metropolitan Area Planning Commission,
 Wichita, Kansas.
 Dated this 30th day of June, 1996.
 Wichita-Sedgwick County Metropolitan Area Planning Commission

_____ Chair
 Susan Osborne-Howes
 _____ Secretary
 Marvin S. Krout

Michael G. Conrey 10-22-96 Surveyor
 Michael G. Conrey

(C) = Calculated
 (M) = Measured
 (D) = Described
 (C-D) = Calculated per Described info.
 □ = Thimble Found
 ● = #4 Baughman Rebar Set

This plat approved and all dedications
 shown hereon accepted by the City Council of the City of Wichita,
 Kansas, this _____ day of _____, 1996.

Know all men by these presents that we,
 the undersigned, have caused the land in the surveyors certificate
 to be platted into Lots and Streets to be known as "CONOCO ADDITION",
 Wichita, Sedgwick County, Kansas. The utility easements are hereby
 granted as indicated for the construction and maintenance of all public
 utilities. The streets are hereby dedicated to and for the use of the public.
 All abutters rights of access to or from Harry Street over and across
 the north line of Lot 1 are hereby granted to the City of Wichita, Kansas
 provided, however, that Lot 1 shall have access to Harry Street at one
 location over all except the east 100 feet of said north line as shall be
 determined by the City Engineer of the City of Wichita, Kansas. All
 abutters rights of access to or from Webb Road over and across the east
 line of Lot 1 are hereby granted to the City of Wichita, Kansas provided,
 however, that Lot 1 shall have access to or from Webb Road at one
 location over all except the north 100 feet of said east line as shall be
 determined by the City Engineer of the City of Wichita, Kansas. All
 abutters rights of access to or from Webb Road over and across the
 east line of Lot 2 are hereby granted to the City of Wichita, Kansas
 provided, however, that Lot 2 shall have access to Webb Road at two
 locations, (one opening for ingress and one opening for egress), as shall
 be determined by the City Engineer of the City of Wichita, Kansas.

_____ Mayor
 Bob Knight
 _____ City Clerk
 Pat Burnett

Conoco Inc., a Delaware Corporation

Entered on transfer record this _____ day
 of _____, 1996.

W.R. Gover
 W.R. Gover, Attorney-in-Fact

_____ County Clerk
 Susan E. Crockett-Spoon

State of Kansas) SS This is to certify that this plat has been
 Sedgwick County) filed for record in the office of the Register of Deeds, this _____ day
 of _____, 1996, at _____ o'clock _____ M.; and is duly
 recorded.

State of Texas) SS The foregoing instrument acknowledged before
 Harris County) me, this 24th day of October, 1996, by W.R. Gover, Attorney-in-
 Fact, of Conoco Inc., a Delaware Corporation, on behalf of the corporation.

_____ Register of Deeds
 Pat Kettler

My App't. Exp. _____
 _____ Notary Public

_____ Deputy
 Ed Resa

