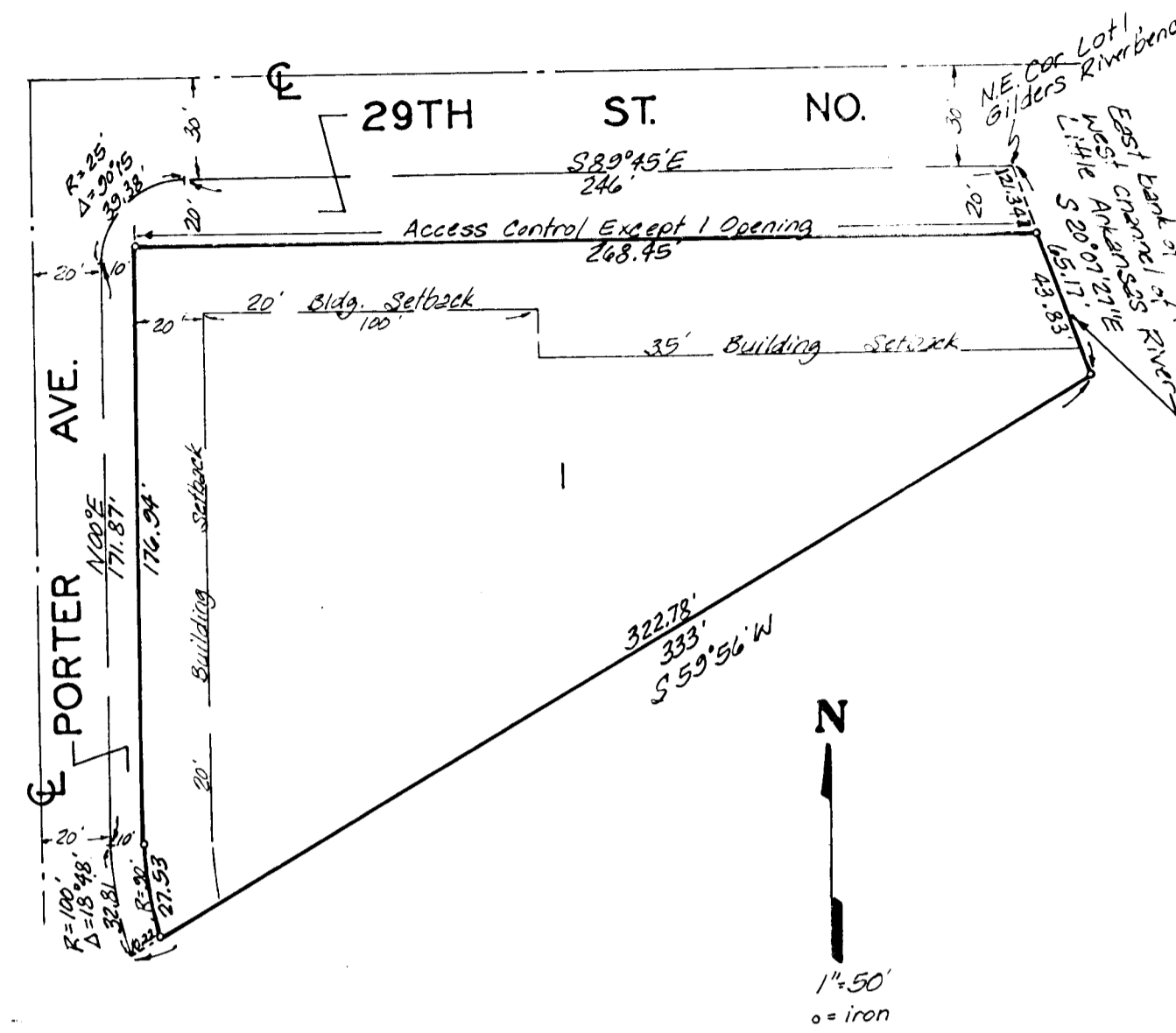


CONNER 3RD ADDITION

WICHITA, KANSAS



State of Kansas ss. We, Baughman Company, P.A., Sedgwick County's ss. Surveyors in aforesaid county and state do hereby certify that we have surveyed and platted "CONNER 3RD ADDITION," Wichita, Kansas, and that the accompanying plat is a true and correct exhibit of the property surveyed described as and being a replat of the north part of Lot 1, Gilders Riverbend Addition, Sedgwick County, Kansas, beginning at the northeast end of the curve at the northwest corner of said Lot 1; thence east along the north line of said Lot 1, a distance of 246 feet, more or less to the northeast corner of said Lot 1; thence south-east along the east line of said Lot 1, 62.75 feet, more or less, to a point 65 feet northwest of the corner between Lots 1 and 2 of said addition; thence south-west 333 feet to a point on a curve 64.49 feet north-west along said curve from the point of curvature of said curve making an interior angle of 73 degrees and 44 minutes to the tangent of said curve; thence north-west along said curve to the right with a radius of 100 feet a distance of 32.31 feet to the point of tangency of said curve; thence north 171.87 feet to the point of curvature of a curve to the right with a radius of 25 feet; thence along said curve a distance of 32.33 feet to the point of beginning, being situated in the N.E. 1/4 of Sec. 6, Twp. 27-S, R-1-E of the 6th P.M., Sedgwick County, Kansas.

1-28-85
Date

Baughman Company, P.A.

William J. Grobel Surveyor

This plat of "CONNER 3RD ADDITION," Wichita, Kansas, has been submitted to and approved by the Wichita-Sedgwick County Metropolitan Area Planning Commission, Wichita, Kansas. Dated this 2 day of September 1985.

Wichita-Sedgwick County Metropolitan Area Planning Commission

William J. Grobel Vice-Chairman
Robert A. Lakin Secretary

This plat approved and all dedications shown hereon accepted by the Board of Commissioners of the City of Wichita, Kansas, this 19 day of MAY, 1985.

Robert G. Knight Mayor
Donald Christid City Clerk

Entered on transfer record this day of 198 .
 County Clerk
 County Clerk

State of Kansas ss. This is to certify that this plat has been filed for record in the office of the Register of Deeds this day of , 198 , at o'clock M.; and is duly recorded.

Pat Kettler Register of Deeds
Ed Ross Deputy

Know all men by these presents that we, the undersigned, have caused the land described in the surveyors certificate to be platted into a lot and streets to be known as "CONNER 3RD ADDITION," Wichita, Kansas. The streets are hereby dedicated to and for the use of the public. All abutters rights of access to or from 29th St. No. over and across the north line of Lot 1 are hereby granted to the City of Wichita provided however that Lot 1 shall have 1 point of access to 29th St. No. as shall be determined by the City Engineer of the City of Wichita, Kansas.

Conner and Company, A Kansas Corporation

J. Alvin Conner President

State of Kansas ss. The foregoing instrument was acknowledged before me this 20 day of February, 1985, by J. Alvin Conner, President of Conner and Company, A Kansas Corporation, on behalf of the corporation.

Mark A. Sevey Notary Public
 My App. Exp. 12 May 1988

We, the undersigned, holders of a mortgage on the above described property do hereby consent to this plat of "CONNER 3RD ADDITION," Wichita, Kansas.

Haysville State Bank
R. E. Schilling

State of Kansas ss. The foregoing instrument was acknowledged before me this day of , 198 , by of Haysville State Bank, on behalf of the bank.

 Notary Public
 My App. Exp.