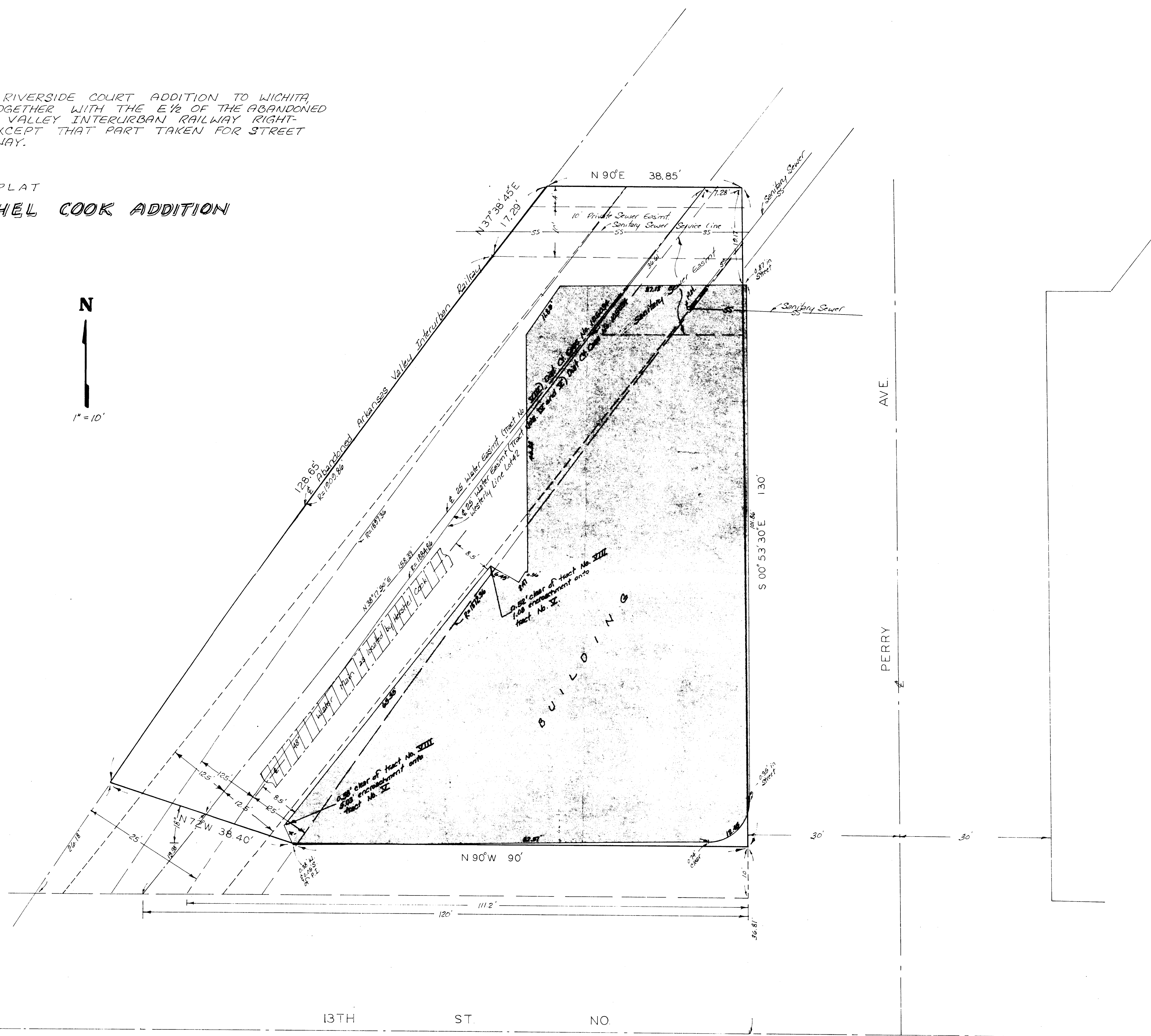


LOT 42, RIVERSIDE COURT ADDITION TO WICHITA, KANSAS, TOGETHER WITH THE E 1/2 OF THE ABANDONED ARKANSAS VALLEY INTERURBAN RAILWAY RIGHT-OF-WAY EXCEPT THAT PART TAKEN FOR STREET RIGHT-OF-WAY.

SKETCH PLAT  
HERSHEL COOK ADDITION



13TH ST NO

PERRY AVE.