

# COOMBS FARM ADDITION

SEDGWICK COUNTY, KANSAS

State of Kansas, Sedgwick County, Kansas, Baughman Company, P.A., Surveyors in and said county and state, do hereby certify that we have surveyed and platted "COOMBS FARM ADDITION," Sedgwick County, Kansas, and that the accompanying plat is a true and correct exhibit of the property surveyed described as that part of the S.E. 1/4 of the S.E. 1/4 of Sec. 23, Twp. 25S, R. 2-W of the 4th Mer., Sedgwick County, Kansas, described as commencing at the S.E. corner of the S.E. 1/4 of said Sec. 23; thence west along the south line of said S.E. 1/4, 339 feet for a place of beginning; thence continuing west along the south line of said S.E. 1/4, 412.97 feet more or less to a point 308.71 feet east of the S.W. corner of the S.E. 1/4 of the S.E. 1/4 of said Sec. 23; thence north, parallel with the west line of said S.E. 1/4 of the S.E. 1/4 of said Sec. 23, 417.42 feet; thence west parallel with the south line of said S.E. 1/4 of the S.E. 1/4 of said Sec. 23, 308.71 feet to a point on the west line of said S.E. 1/4 of the S.E. 1/4 of said Sec. 23; thence north 906.95 feet more or less to the N.W. corner of the S.E. 1/4 of the S.E. 1/4 of said Sec. 23; thence east along the north line of said S.E. 1/4 of the S.E. 1/4 of said Sec. 23, 1038.58 feet more or less to a point 280.17 feet west of the N.E. corner of said S.E. 1/4 of the S.E. 1/4 of said Sec. 23; thence south parallel with the east line of said S.E. 1/4, 466.35 feet; thence east parallel with the north line of said S.E. 1/4 of the S.E. 1/4 of said Sec. 23, 280.17 feet to a point on the east line of said S.E. 1/4; thence south along the east line of said S.E. 1/4, 236.69 feet more or less to a point 621 feet north of the S.E. corner of said S.E. 1/4; thence west parallel with the south line of said S.E. 1/4, 19.8 feet; thence south parallel with the east line of said S.E. 1/4, 175 feet; thence east parallel with the south line of said S.E. 1/4, 184 feet to a point on the east line of said S.E. 1/4; thence south along the east line of said S.E. 1/4, 259 feet; thence west parallel with the south line of said S.E. 1/4, 339 feet; thence south parallel with the east line of said S.E. 1/4, 187 feet to the place of beginning.

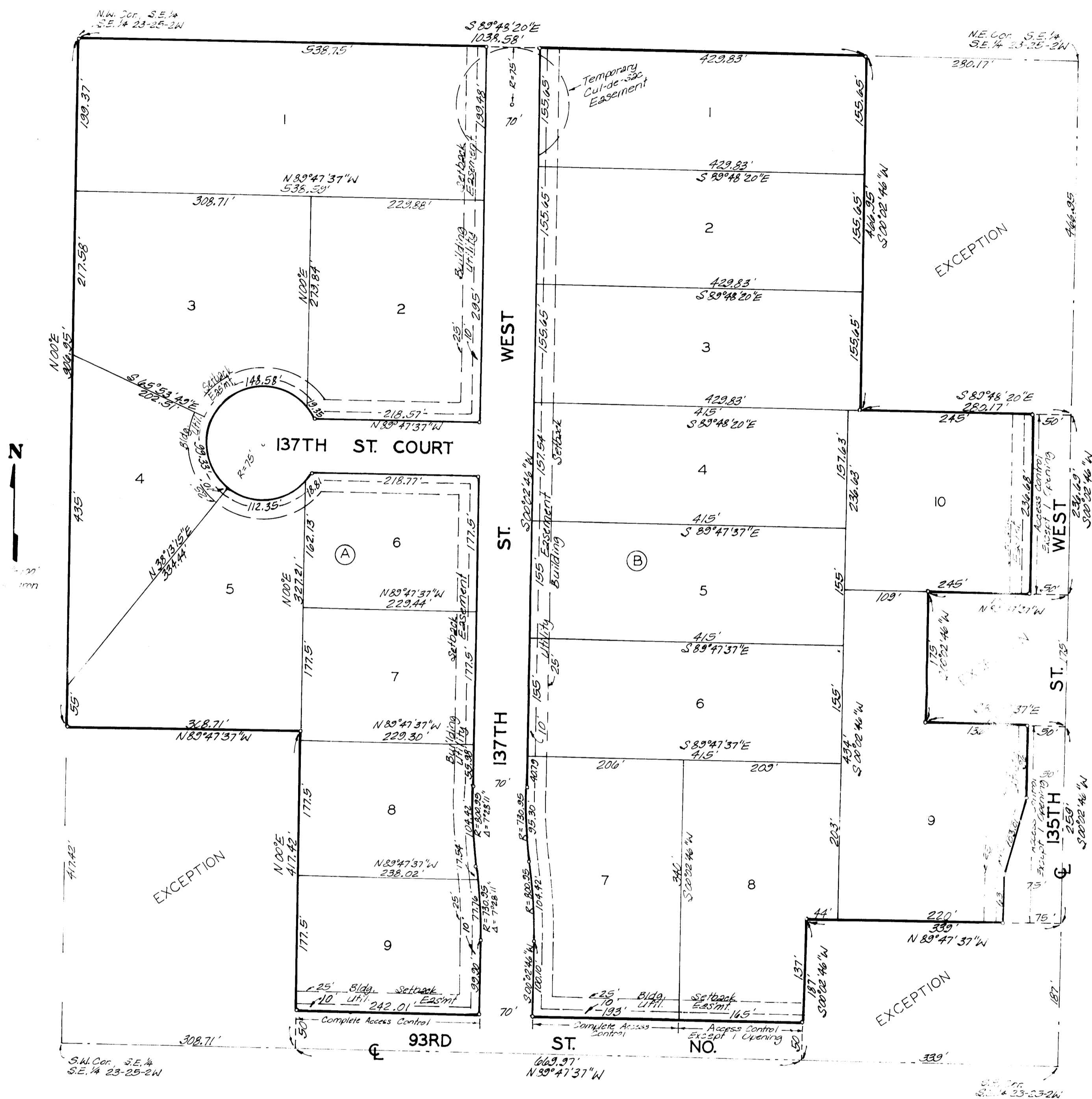
May 21, 1925  
Date  
Baughman Company, P.A.  
Surveyor  
John E. Lundblad  
John E. Lundblad

Know all men by these presents that we, the undersigned, have caused the land described in the surveyors certificate to be platted into lots, blocks, and streets to be known as "COOMBS FARM ADDITION," Sedgwick County, Kansas. The streets are hereby dedicated to and for the use of the public. The utility easements are hereby granted as indicated for the construction and maintenance of all public utilities. All abutters rights of access to or from 93rd St. No. over and across the south line of Lot 9, Block A and Lots 7 and 8, Block B, and to or from 135th St. West over and across the east line of Lots 9 and 10, Block B, are hereby granted to the appropriate governing body; provided however that Lot 8, Block B shall have access to 93rd St. No. at 1 point, and that Lots 9 and 10, Block B, shall have access to 135th St. West at 1 point each, all as shall be determined by the appropriate governing body. The temporary out-of-sac easement shall expire when the street is extended.

J.B.L., Inc.  
Jeff M. Lange  
President

State of Kansas, Sedgwick County, Kansas. The foregoing instrument was acknowledged before me this 21st day of May, 1925, by Jeff M. Lange, President of J.B.L., Inc.

Notary Public  
My App. Exp. 12 May 1926



This plat of "COOMBS FARM ADDITION," Sedgwick County, Kansas, has been submitted to and approved by the Wichita-Sedgwick County Metropolitan Area Planning Commission, Wichita, Kansas. Dated this 15th day of May, 1925.

Wichita-Sedgwick County Metropolitan Area Planning Commission  
Chairman  
Secretary

This plat approved and all dedications shown hereon accepted by the Board of Commissioners of Sedgwick County, Kansas, this 15th day of May, 1925.

Chairman  
Commissioner  
Commissioner  
County Clerk

Entered on transfer record this 15th day of May, 1925.  
County Clerk

State of Kansas, Sedgwick County, Kansas. This is to certify that this plat has been filed for record in the office of the Register of Deeds this 15th day of May, 1925, at 10 o'clock A.M. and is duly recorded.

Register of Deeds  
Deputy