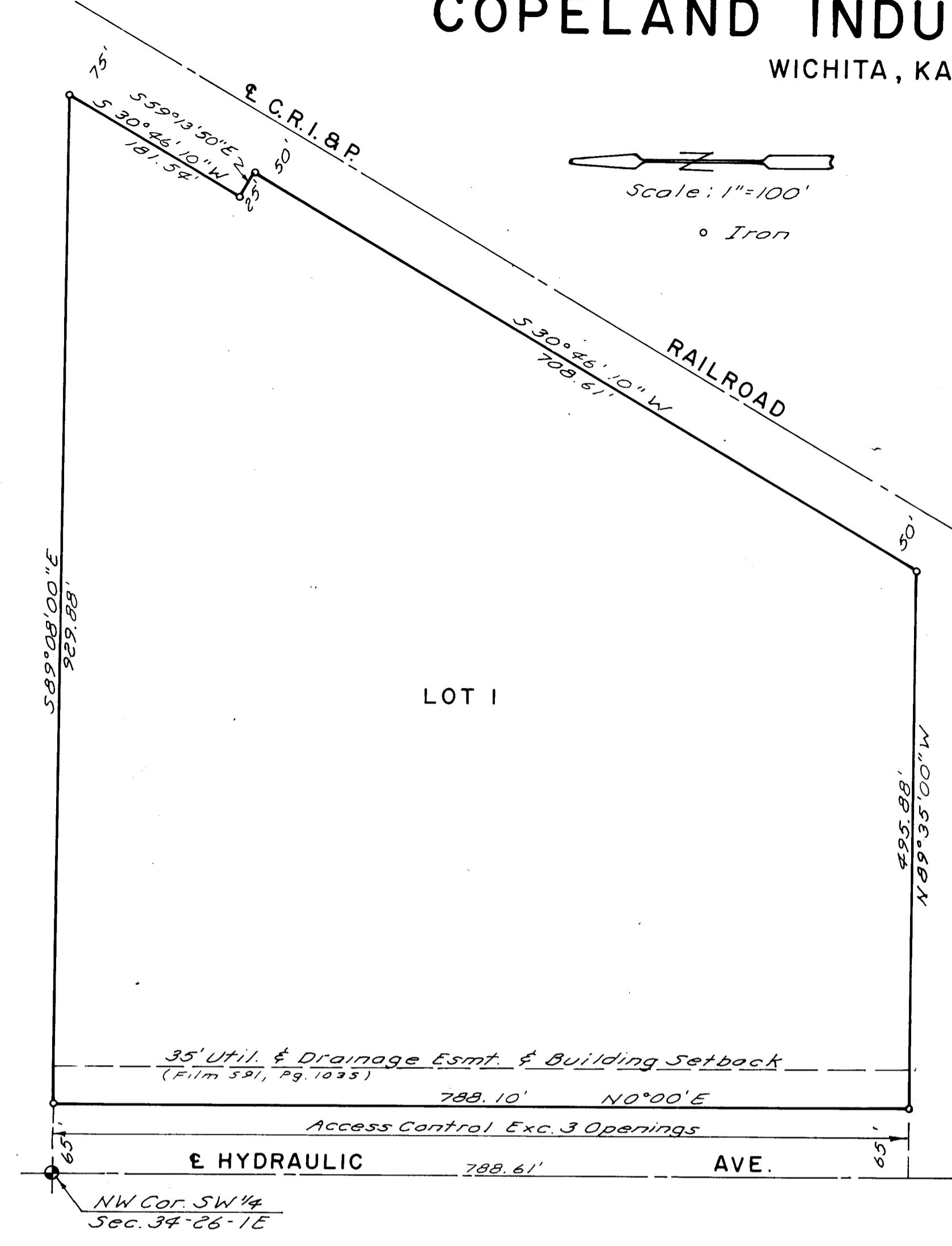
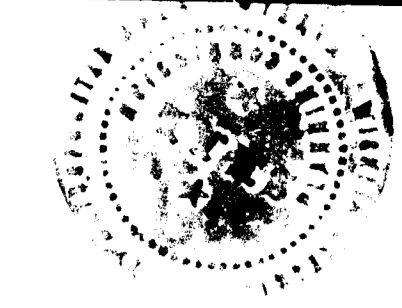


COPELAND INDUSTRIAL PARK

WICHITA, KANSAS



This plat of "COPELAND INDUSTRIAL PARK", Wichita, Kansas, has been submitted to and approved by the Wichita-Sedgwick County Metropolitan Area Planning Commission, Wichita, Kansas. Dated this 16th day of MAY, 1985

Wichita-Sedgwick County Metropolitan Area Planning Commission
James C. Wilson Chairman
Michael E. Lindbeck Secretary

This plat approved and all dedications shown hereon accepted by the Board of City Commissioners, Wichita, Kansas, this _____ day of _____, 1986.

 Tony Casado Mayor

 DALE E REA City Clerk

Entered on transfer record this _____ day of _____, 1986

 Dan Wright County Clerk

State of Kansas } S.S. This is to certify that Sedgwick County } this plat has been filed for record in the Office of the Register of Deeds this _____ day of _____, 1986, at _____ o'clock, _____ M., and is duly recorded.

 Pat Ketter Register of Deeds

 Ed Resa Deputy

State of Kansas } S.S. We, Baughman Company, P.A., surveyors in aforesaid county and state, do hereby certify that we have surveyed and platted "COPELAND INDUSTRIAL PARK", Wichita, Kansas, and that the accompanying plat is a true and correct exhibit of the property surveyed, described as all that part of the SW 1/4 of Section 34, T26S, R1E of the 6th P.M., Sedgwick County, Kansas, except the south 115 acres thereof, lying west of the Chicago, Rock Island and Pacific Railroad right of way, except the west 65 feet taken for street.
 Date Nov. 14, 1986 Baughman Company, P.A.

John E. Lundblade
 John E. Lundblade Surveyor

We, Bank IV, Wichita, holder of a mortgage on the above described property, do hereby consent to this plat of "COPELAND INDUSTRIAL PARK".

Bank IV, Wichita

State of Kansas } S.S. The foregoing instrument Sedgwick County } was acknowledged before me this _____ day of _____, 1986, by _____ of Bank IV, Wichita, on behalf of the bank.

 Ellen L. Shaffer Notary Public
 My Commission Expires _____

Know all men by these presents, that we, the undersigned, have caused the land described in the surveyors certificate to be platted into a lot to be known as "COPELAND INDUSTRIAL PARK", Wichita, Kansas. The easement is hereby granted as indicated for the construction and maintenance of public utilities and for drainage purposes. All abutters rights of access to Hydraulic Ave. are hereby granted to the City of Wichita, Kansas, except, however, that Lot 1 shall have access to Hydraulic at three locations, said locations to be determined by the City Engineer.

Harold D. Copeland
Dorothy Copeland

State of Kansas } S.S. The foregoing instrument was acknowledged before me this _____ day of _____, 1986, by Harold D. Copeland and Dorothy Copeland, his wife.

 Edwina P. Saly Notary Public
 My Commission Expires _____