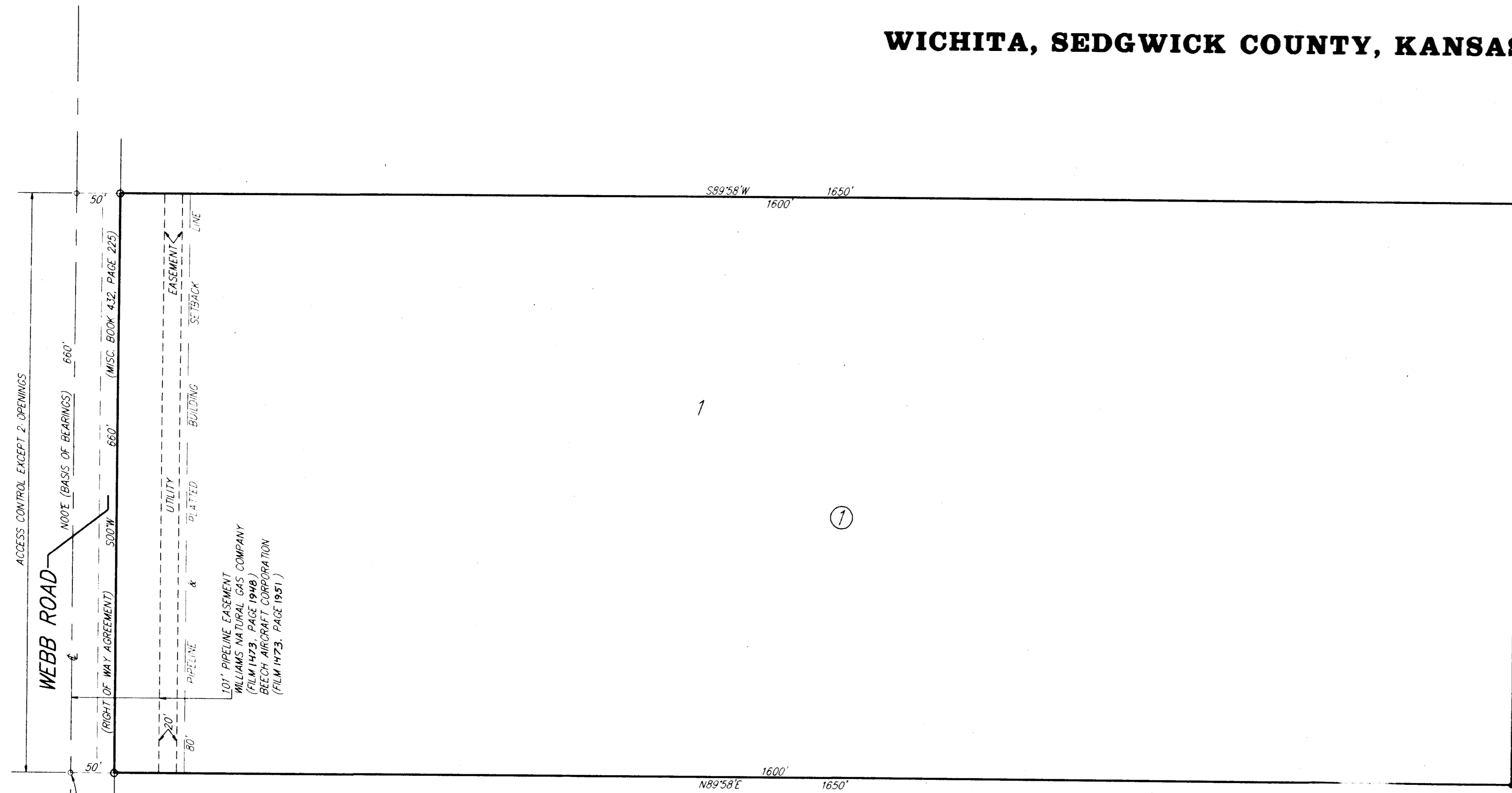


# CHRIST COMMUNITY CHURCH ADDITION

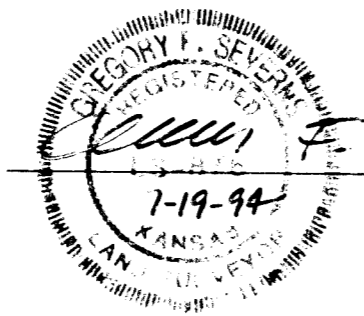
WICHITA, SEDGWICK COUNTY, KANSAS



State of Kansas) SS We, Baughman Company, P.A., Surveyors of Sedgwick County and state do hereby certify that we have surveyed and platted "CHRIST COMMUNITY CHURCH ADDITION", Wichita, Sedgwick County, Kansas, and that the accompanying plat is a true and correct exhibit of the land described as and being that part of the S.W. 1/4 of Sec. 33, Twp. 27-S, R-2-E of the 6th P.M., Sedgwick County Kansas, described as commencing at the S.W. Cor. of said S.W. 1/4; thence north along the west line of said S.W. 1/4, 1326.75 feet for a place of beginning; thence east with a deflection angle to the right of 89°58', 1650 feet; thence north parallel with the west line of said S.W. 1/4, 660 feet; thence west with a deflection angle to the left of 90°02', 1650 feet to the west line of said S.W. 1/4; thence south along the west line of said S.W. 1/4, 660 feet to the place of beginning.

Existing easements and dedications being vacated by virtue of K.S.A. 12-512(b).

Baughman Company, P.A.



Gregory F. Severns  
Surveyor

Know all men by these presents that we, the undersigned, have caused the land described in the surveyors certificate to be platted into a lot and a block to be known as "CHRIST COMMUNITY CHURCH ADDITION", Wichita, Sedgwick County, Kansas. The utility easement is hereby granted as indicated for the construction and maintenance of all public utilities. All abutters rights of access to and from Webb Road over and across the west line of Lot 1, Block 1, are hereby granted to the City of Wichita, Kansas provided, however, that Lot 1, Block 1, shall have access to Webb Road at two locations as shall be determined by the City Engineer of the City of Wichita, Kansas. The street is hereby dedicated to and for the use of the public.

Christ Community Church United Methodist

John Hanson  
John Hanson  
Chairperson of the Board of Trustees

This plat of "CHRIST COMMUNITY CHURCH ADDITION", Wichita, Sedgwick County, Kansas has been submitted to and approved by the Wichita-Sedgwick County Metropolitan Area Planning Commission, Wichita, Kansas.  
Dated this 23rd day of July, 1994.  
Wichita-Sedgwick County Metropolitan Area Planning Commission



James D. Miner  
Chairman

Marvin S. Krout  
Secretary

This plat approved and all dedications shown hereon accepted by the City Council of the City of Wichita, Kansas, this 24 day of JANUARY, 1995

Elma Broadfoot  
Mayor

Pat Burnett  
Deputy City Clerk

Entered on transfer record this \_\_\_\_\_ day of \_\_\_\_\_, 1994.

Susan E. Crockett-Spoon  
County Clerk

State of Kansas) SS This is to certify that this plat has been filed for record in the office of the Register of Deeds this \_\_\_\_\_ day of \_\_\_\_\_, 1994, \_\_\_\_\_ o'clock \_\_\_\_\_ M., and is duly recorded.

Pat Kettler  
Register of Deeds

Ed Resa  
Deputy

State of Kansas) SS The foregoing instrument was acknowledged before me this 23rd day of July, 1994, by John Hanson, Chairperson of the Board of Trustees, Christ Community Church United Methodist, on behalf of the church.

Mildred E. Franz  
MILDRED E. FRANZ  
Notary Public  
My App't Exp. 2-3-95

- = 1/2" REBAR W/ "BAUGHMAN" CAP (FOUND)
- = 3/4" IRON (FOUND)

BENCHMARK:  
R.R. SPIKE, E. SIDE P.P., 1667.9' N. &  
51.6' W. @ PAWNEE & WEBB ROAD  
ELEV. = 1378.10 M.S.L. (190.70 CITY DATUM)