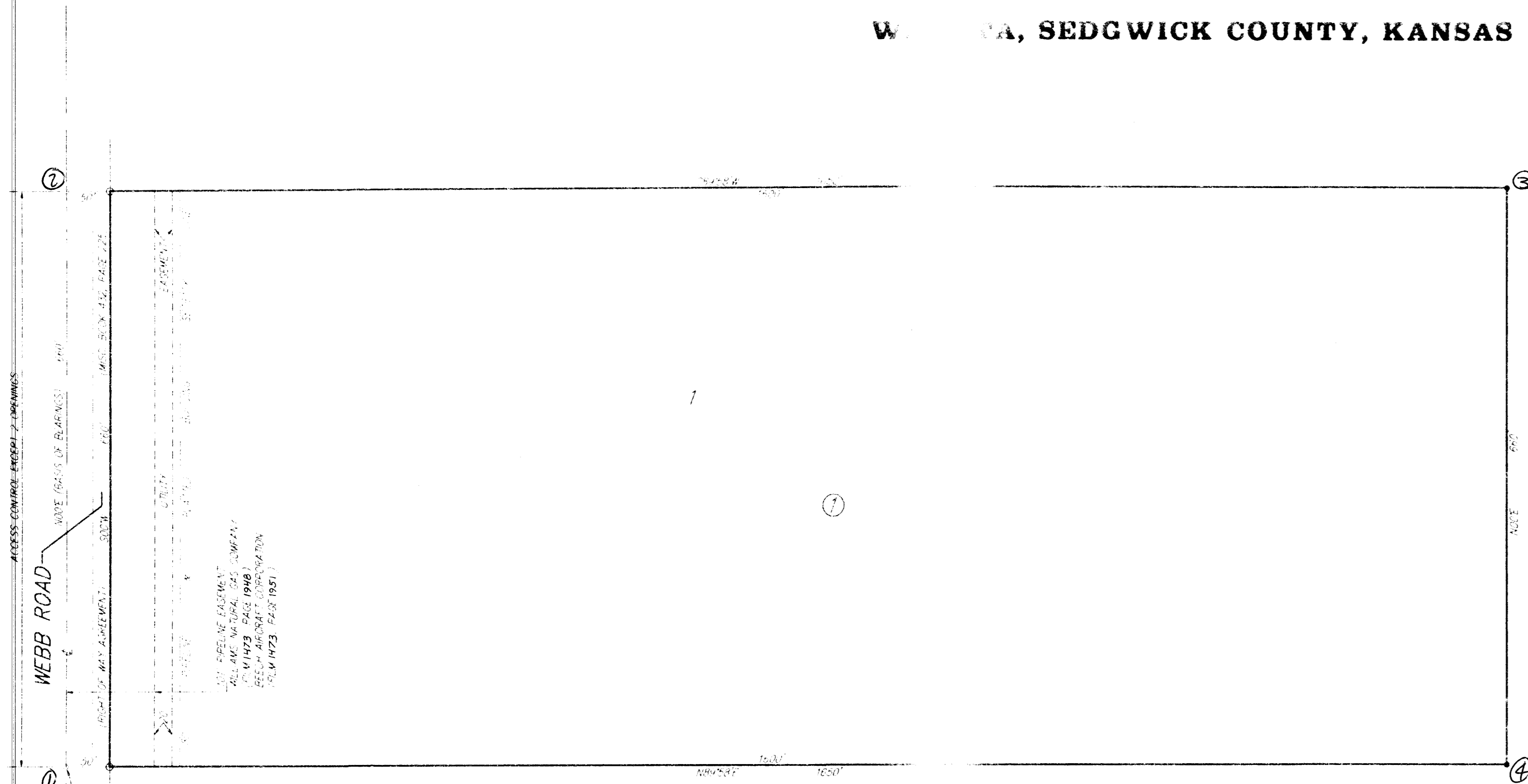


CHRIST COMMUNITY CHURCH ADDITION

WICHITA, SEDGWICK COUNTY, KANSAS



State of Kansas) We, Baughman Company, P.A., Surveyors in
Sedgwick County, Kansas do hereby certify that we have surveyed
and platted the above described land and being that part of the
S.W. 1/4 of Section 27-S, R-2-E of the 6th P.M., Sedgwick
County Kansas, as commencing at the S.W. Cor. of said
S.W. 1/4; thence along the west line of said S.W. 1/4, 1326.75
feet for a place of beginning; thence east with a deflection angle to
the right of 90°00'00" to the west line of said S.W. 1/4; thence
west with a deflection angle to the left of 90°00'00" to the west line of said S.W. 1/4; thence
south along the west line of said S.W. 1/4, 660 feet to the place of
beginning.

and all dedications being vacated by virtue
of the following:
Baughman Company, P.A.

Gregory F. Severns
Gregory F. Severns
Surveyor

We know all men by these presents that we, the
undersigned, have surveyed and platted the land described in the surveyors certificate
to be platted and a block to be known as "CHRIST COMM-
UNITY CHURCH ADDITION", Wichita, Sedgwick County, Kansas. The utility
easement is here indicated as indicated for the construction and
maintenance of the utilities. All abutters rights of access to and
from Webb Road and across the west line of Lot 1, Block 1, are
hereby granted to the City of Wichita, Kansas provided, however, that
Lot 1, Block 1, shall have access to Webb Road at two locations as shall
be determined by the City Engineer of the City of Wichita, Kansas.

Christ Community Church United Methodist
John Hanson
John Hanson
Chairperson of the
Board of Trustees

This plat of "CHRIST COMMUNITY CHURCH
ADDITION", Wichita, Sedgwick County, Kansas has been submitted to and
approved by the Wichita-Sedgwick County Metropolitan Area Planning
Commission, Wichita, Kansas.
Dated this ____ day of _____, 1994.
Wichita-Sedgwick County Metropolitan Area Planning Commission

James P. Mirer
Chairman

Marvin S. Krout
Secretary

This plat approved and all dedications shown
hereon accepted by the City Council of the City of Wichita, Kansas,
this ____ day of _____, 1994.

Lima Brecht
Mayor

Pat Burnett
Deputy City Clerk

Entered on transfer record this ____ day of
_____, 1994.

Susan E. Crockett-Spoon
County Clerk

State of Kansas) ss I, _____, Notary Public,
Sedgwick County, Kansas do hereby certify that this plat has been filed
for record in the office of the Register of Deeds this ____ day of
_____, 1994, at ____ o'clock ____ M., and is duly recorded.

Pat Kettler
Register of Deeds

Ed Resz
Deputy

State of Kansas) ss The foregoing instrument was acknowledged
Sedgwick County) before me this 12th day of July, 1994, by John Hanson,
Chairperson of the Board of Trustees, Christ Community Church United
Methodist, on behalf of the church.

My App't Exp. 2-3-95
Mildred E. Franz
MILDRED E. FRANZ
Notary Public

• = 1/2" REBAR W/ "BAUGHMAN" CAP (FOUND)
o = 3/4" IRON (FOUND)
BENCHMARK:
P.R. SPIRO, E. SIDE OF THE PLAT N. &
S.W. W. OF PAWNEE & WEBB ROAD
ELEV. = 1240.00 MSL (1980 ANGLE CITY DATUM)