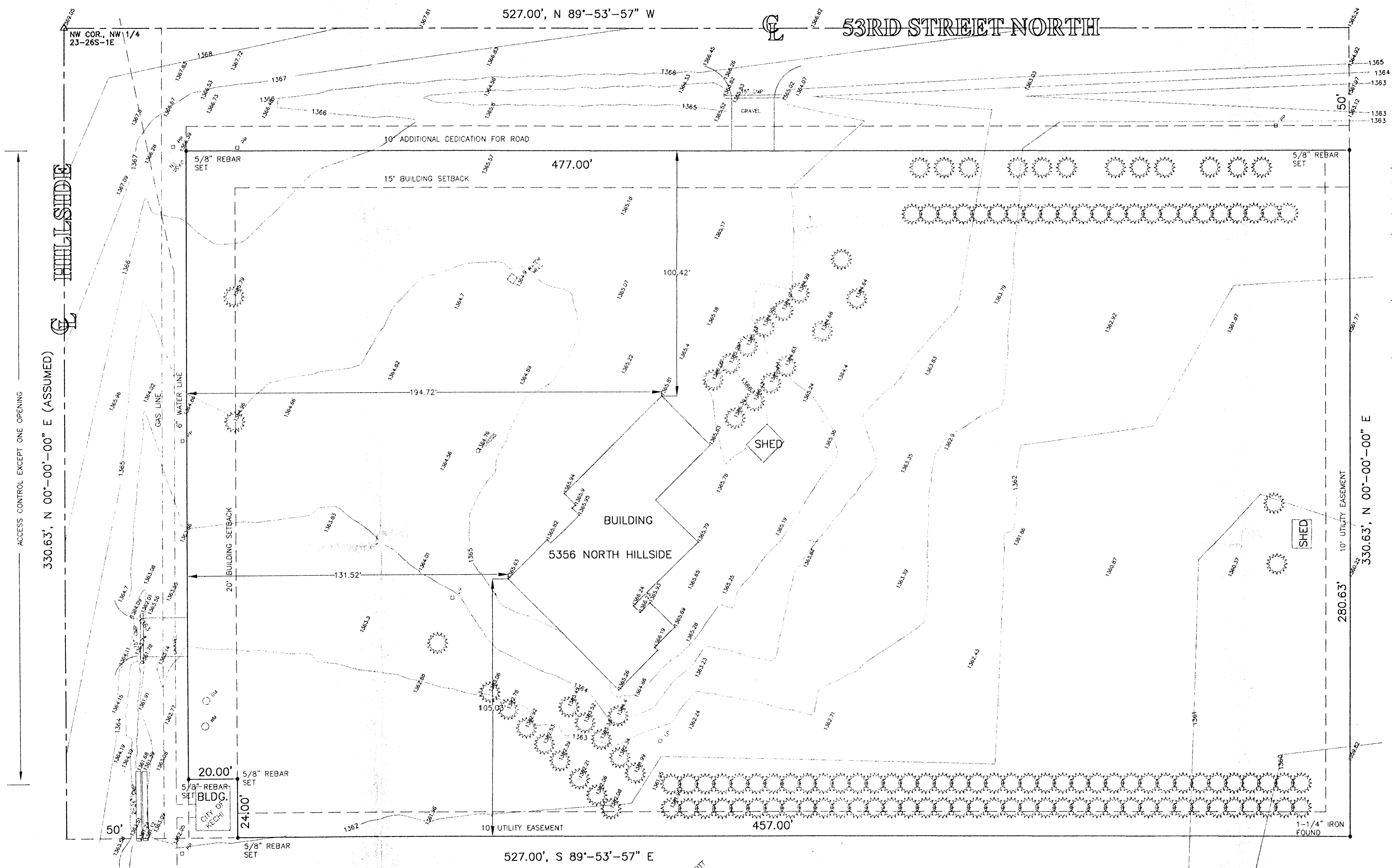




SCALE: 1" = 20'



SUBDIVIDER:
 CHRIST LUTHERAN CHURCH
 5356 N. HILLSIDE
 WICHITA, KANSAS 67220
 ATT: MR. WATER DIETZ

SURVEYOR:
 BABAR M. KHAN, L.S.
 MUNICIPAL ENGINEERS, P.A.
 254-LAURA, SUITE 201
 WICHITA, KANSAS 67211

AREA:
 GROSS = 4.0 ACRES, MORE OR LESS
 NET = 3.07 ACRES, MORE OR LESS
 NO. OF LOTS = 1

THELMA M. SCOTT



BENCH MARK: TOP OF IRON PIPE AT SECTION CORNER, NW COR. NW1/4, 23-26S-1E. ELEV. = 1369.05

VICINITY MAP
 CHRIST LUTHERAN CHURCH ADDITION
 TO SEDGWICK COUNTY, KANSAS

LEGAL DESCRIPTION:
 NORTH 330.63 FEET OF WEST 527 FEET OF NW 1/4, SECTION 23, TOWNSHIP 26 SOUTH, RANGE 1 EAST OF 6TH P.M., SEDGWICK COUNTY, KANSAS EXCEPT WEST 50 FEET AND NORTH 40 FEET FOR ROAD AND EXCEPT:
 THE AREA OF LAND ENCOMPASSED BY 24 FEET NORTH AND 20 FEET EAST OF THE SOUTHWEST CORNER OF THE NORTH 330.63 FEET OF THE WEST 527 FEET (EXCEPT AREA FOR ROAD) OF THE NORTHWEST QUARTER (NW1/4) OF SECTION 23, IN TOWNSHIP 26 SOUTH, OF RANGE 1 EAST OF THE SIXTH PRINCIPAL MERIDIAN, IN SEDGWICK COUNTY, KANSAS.

SCALE:	APPROVED:	DRAWN BY:
DATE:	CHECKED:	
PROJECT NO.:	SHEET NO.:	
95-21 (MUNICIPAL)		
ME MUNICIPAL ENGINEERS		
254-LAURA, SUITE 201 WICHITA, KANSAS 67211 316-262-3842		