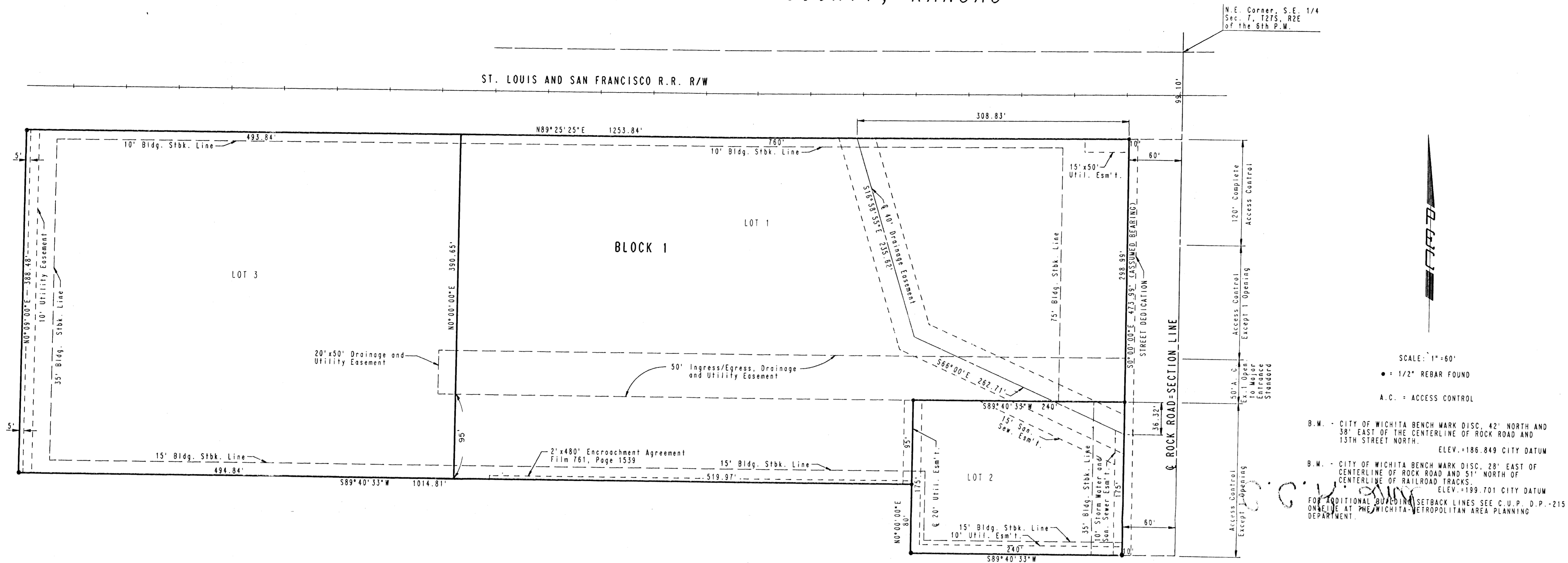


C.C.R. 2ND ADDITION TO WICHITA, SEDGWICK COUNTY, KANSAS



STATE OF KANSAS)
COUNTY OF SEDGWICK) SS

I, MICHAEL W. BERRY, A REGISTERED LAND SURVEYOR IN AFORESAID STATE AND COUNTY, DO HEREBY CERTIFY THAT ON THIS 23rd DAY OF November, 1994, I HAVE CAUSED TO BE SURVEYED AND PLATTED C.C.R. 2ND ADDITION TO WICHITA, SEDGWICK COUNTY, KANSAS, INTO LOTS, A BLOCK AND A STREET; THE SAME BEING A REPEAT OF AND DESCRIBED AS:

LOTS 1, 2 AND 3, IN C.C.R. ADDITION, WICHITA, SEDGWICK COUNTY, KANSAS.

ALL PORTION OF LOTS 1, 2 AND 3 IN C.C.R. ADDITION, WICHITA, SEDGWICK COUNTY, KANSAS, AND DRAINAGE EASEMENT AS PER FILM 1044, PAGE 217 AND MAINTENANCE ACCESS EASEMENT AS PER FILM 1044, PAGE 219 ARE HEREBY VACATED AND REPLATTED BY VIRTUE OF K.S.A. 12-512(C) AMENDED.

Michael W. Berry
MICHAEL W. BERRY R.L.S. NO. 7346
PROFESSIONAL ENGINEERING CONSULTANTS, P.A.

KNOW ALL MEN BY THESE PRESENTS THAT WE, THE UNDERSIGNED PROPERTY OWNERS OF THE LAND AS ABOVE SET FORTH IN THE SURVEYOR'S CERTIFICATE, HAVE CAUSED THE LAND TO BE SURVEYED AND PLATTED INTO LOTS, A BLOCK AND A STREET; THE SAME TO BE KNOWN AS C.C.R. 2ND ADDITION TO WICHITA, SEDGWICK COUNTY, KANSAS.

EASEMENTS, AS INDICATED FOR THE CONSTRUCTION AND MAINTENANCE OF PUBLIC UTILITIES AND DRAINAGE ARE HEREBY GRANTED. THE STREET IS HEREBY DEDICATED TO AND FOR THE USE OF THE PUBLIC.

THE 50 FOOT INGRESS/EGRESS, DRAINAGE AND UTILITY EASEMENT IS HEREBY DEDICATED FOR PUBLIC UTILITIES AND DRAINAGE AND TO PROVIDE ACCESS TO AND FROM ROCK ROAD TO LOTS 1, 2 AND 3, BLOCK 1.

FOR ADDITIONAL BUILDING SETBACK LINES SEE C.U.P. D.P. -215 ON FILE AT THE WICHITA-SEDGWICK COUNTY METROPOLITAN AREA PLANNING DEPARTMENT.

OWNER: C.C.R. ASSOCIATES, A KANSAS GENERAL PARTNERSHIP.

BY: Stephen L. Clark PARTNER.
STEPHEN L. CLARK

STATE OF KANSAS)
COUNTY OF SEDGWICK) SS

BE IT REMEMBERED THAT ON THIS 23rd DAY OF November, 1994, BEFORE ME A NOTARY PUBLIC IN AFORESAID STATE AND COUNTY, CAME STEPHEN L. CLARK, PARTNER OF C.C.R. ASSOCIATES A KANSAS GENERAL PARTNERSHIP TO ME PERSONALLY KNOWN TO BE THE SAME PERSON WHO EXECUTED THE FOREGOING INSTRUMENT OF WRITING AND DULY ACKNOWLEDGED THE EXECUTION OF SAME FOR AND ON BEHALF AND AS THE VOLUNTARY ACT AND DEED OF SAID PARTNERSHIP, IN TESTIMONY WHEREOF I HAVE HEREUNTO SET MY HAND AND AFFIXED MY NOTARIAL SEAL THE DAY AND YEAR ABOVE WRITTEN.

Gary L. Wiley NOTARY PUBLIC
GARY L. WILEY
MY COMMISSION EXPIRES Jan 15, 1997



THIS PLAT HAS BEEN SUBMITTED TO AND APPROVED BY THE WICHITA-SEDGWICK COUNTY METROPOLITAN AREA PLANNING COMMISSION, WICHITA, KANSAS, DATED THIS 14th DAY OF November, 1994.

John W. McKay, Jr. CHAIRMAN
JOHN W. MCKAY, JR.
Marvin S. Kroot SECRETARY
MARVIN S. KROOT

THIS PLAT APPROVED AND ALL DEDICATIONS SHOWN HEREON ARE ACCEPTED BY THE CITY COUNCIL OF THE CITY OF WICHITA, KANSAS, DATED THIS 15th DAY OF December, 1994.

Elma Broadfoot MAYOR
ELMA BROADFOOT
Pat Burnett DEPUTY CITY CLERK
PAT BURNETT
ENTERED ON TRANSFER RECORD THIS _____ DAY OF _____, 1994
SUSAN E. CROCKETT-SPOON COUNTY CLERK

THIS IS TO CERTIFY THAT THIS INSTRUMENT WAS FILED FOR RECORD IN THE REGISTER OF DEEDS OFFICE AT _____, ON THIS _____ DAY OF _____, 1994.

Pat Kettler REGISTER OF DEEDS
PAT KETTLER
Ed Resa DEPUTY
ED RESA

