

# DRAINAGE PLAN 10/94

## C.C.R. 2ND ADDITION

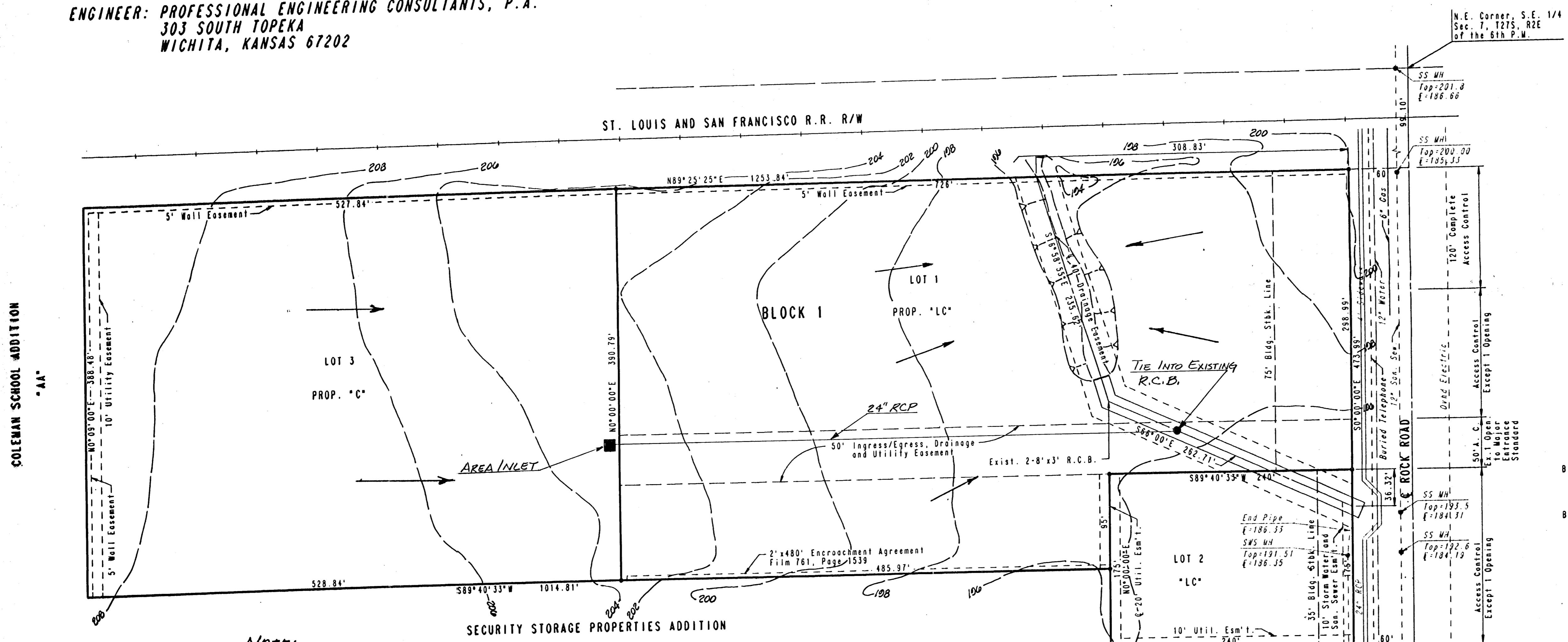
### TO WICHITA, SEDGWICK COUNTY, KANSAS

OWNER: C.C.R. ASSOCIATES  
 c/o STEPHEN L. CLARK  
 P.O. BOX 21080  
 WICHITA, KANSAS 67208

ENGINEER: PROFESSIONAL ENGINEERING CONSULTANTS, P.A.  
 303 SOUTH TOPEKA  
 WICHITA, KANSAS 67202

A(ac.)	C <sub>p</sub>	C <sub>100</sub>	i <sub>a</sub> (in./hr.)	i <sub>100</sub> (in./hr.)	Q <sub>e</sub> (cfs)	Q <sub>100</sub> (cfs)
11.7	0.60	0.80	3.80	7.36	30.2	68.9
LOT 3 ONLY 4.7	0.60	0.80	3.80	7.36	12.1	27.7

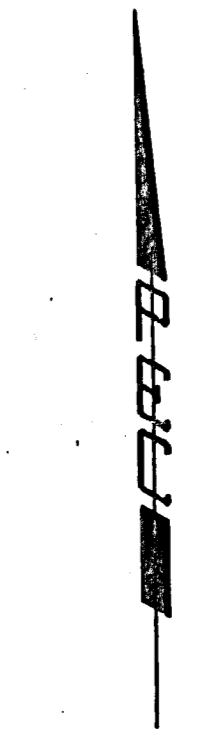
NOTE: "C" BASED ON "BUSINESS-NEIGHBORHOOD AREA"  
 "i" BASED ON t<sub>c</sub> = 15 min.



Note:  
 All site drainage to be carried  
 overland or in storm sewer to  
 proposed RCB extension located  
 in 40-foot Drainage Easement.

N.E. Corner, S.E. 1/4  
 Sec. 7, T27S, R2E  
 of the 6th P.M.

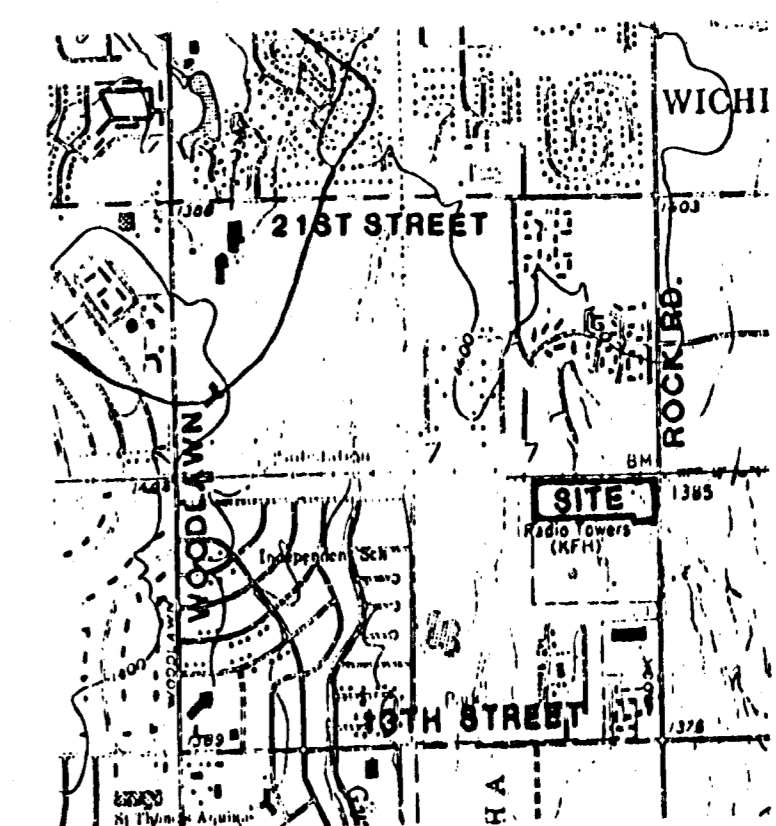
COLEMAN SCHOOL ADDITION  
 "AA"



SCALE: 1" = 60'  
 SEPTEMBER, 1994  
 TOPOGRAPHY OCTOBER, 1989

B.M. - CITY OF WICHITA BENCH MARK DISC. 42' NORTH AND  
 38' EAST OF THE CENTERLINE OF ROCK ROAD AND  
 13TH STREET NORTH. ELEV. = 186.849 CITY DATUM

B.M. - CITY OF WICHITA BENCH MARK DISC. 28' EAST OF  
 CENTERLINE OF ROCK ROAD AND 51' NORTH OF  
 CENTERLINE OF RAILROAD TRACKS. ELEV. = 199.701 CITY DATUM



AREA MAP