

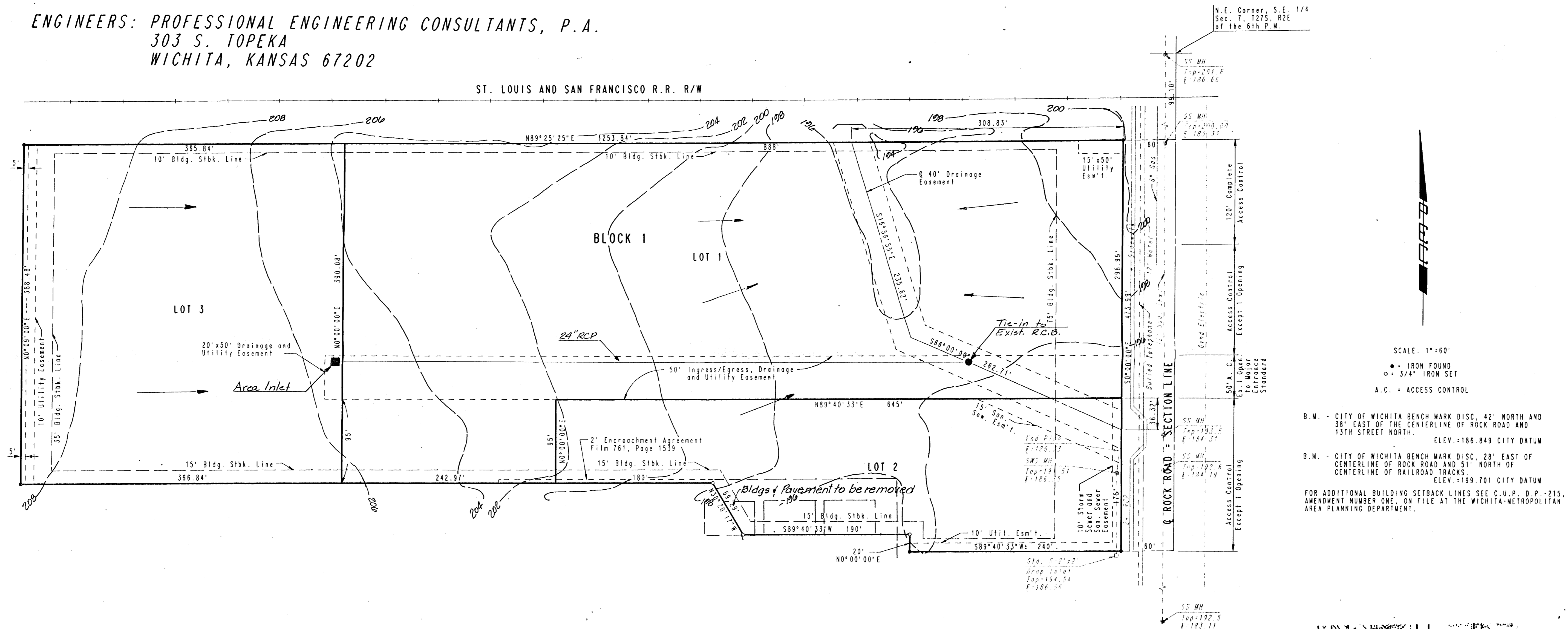
VICINITY MAP OF C.C.R. 3RD ADDITION

OWNERS: C.C.R. ASSOCIATES, A KANSAS PARTNERSHIP AND
SECURITY STORAGE PROPERTIES, A KANSAS GENERAL PARTNERSHIP
c/o STEPHEN L. CLARK
P.O. BOX 21080
WICHITA, KANSAS 67208

ENGINEERS: PROFESSIONAL ENGINEERING CONSULTANTS, P.A.
303 S. TOPEKA
WICHITA, KANSAS 67202

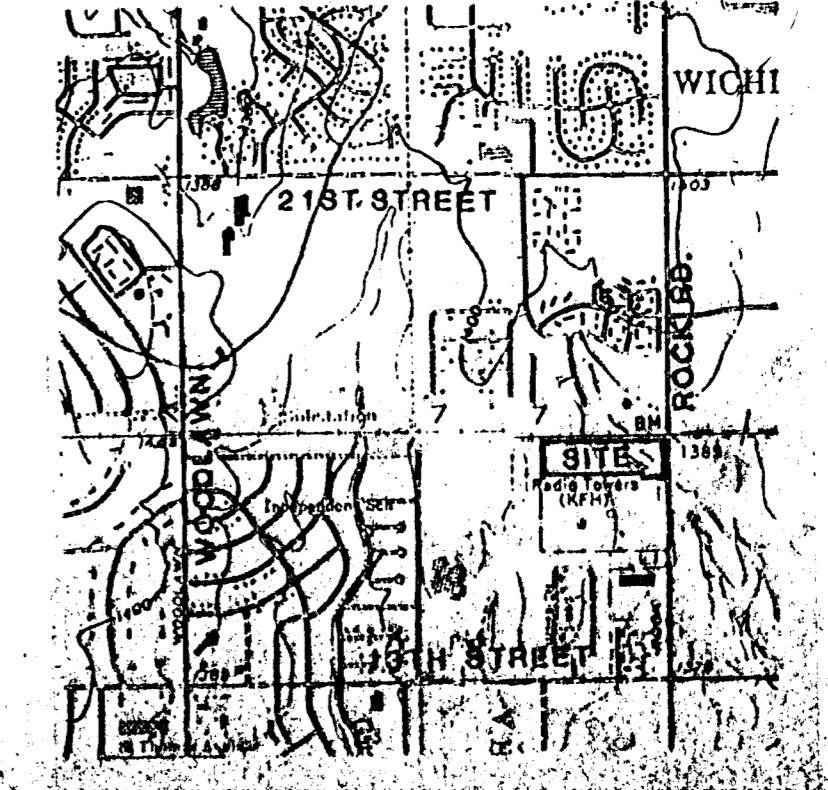
	A(ac.)	C ₂	C ₁₀₀	L ₂ (in/hr.)	L ₁₀₀ (in/hr.)	Q ₂ (cfs)	Q ₁₀₀ (cfs)
Lot 3 Only	12.0	0.63	0.80	3.80	7.36	31.0	70.6
	4.7	0.63	0.80	3.80	7.36	12.1	27.7

Note: "C" based on "Business - Neighborhood Area"
"L" based on L_c = 15 min.



Note: All site drainage to be carried
overland or in storm sewer to
proposed RCB extension located
in 40-foot Drainage Easement.

DRAINAGE PLAN
2/95



AREA MAP

SCALE: 1"=60'
● = IRON FOUND
○ = 3/4" IRON SET
A.C. = ACCESS CONTROL

B.M. - CITY OF WICHITA BENCH MARK DISC. 42' NORTH AND
38' EAST OF THE CENTERLINE OF ROCK ROAD AND
13TH STREET NORTH. ELEV. = 186.849 CITY DATUM

B.M. - CITY OF WICHITA BENCH MARK DISC. 28' EAST OF
CENTERLINE OF ROCK ROAD AND 51' NORTH OF
CENTERLINE OF RAILROAD TRACKS. ELEV. = 199.701 CITY DATUM

FOR ADDITIONAL BUILDING SETBACK LINES SEE C.U.P. D.P. - 215,
AMENDMENT NUMBER ONE, ON FILE AT THE WICHITA-METROPOLITAN
AREA PLANNING DEPARTMENT.