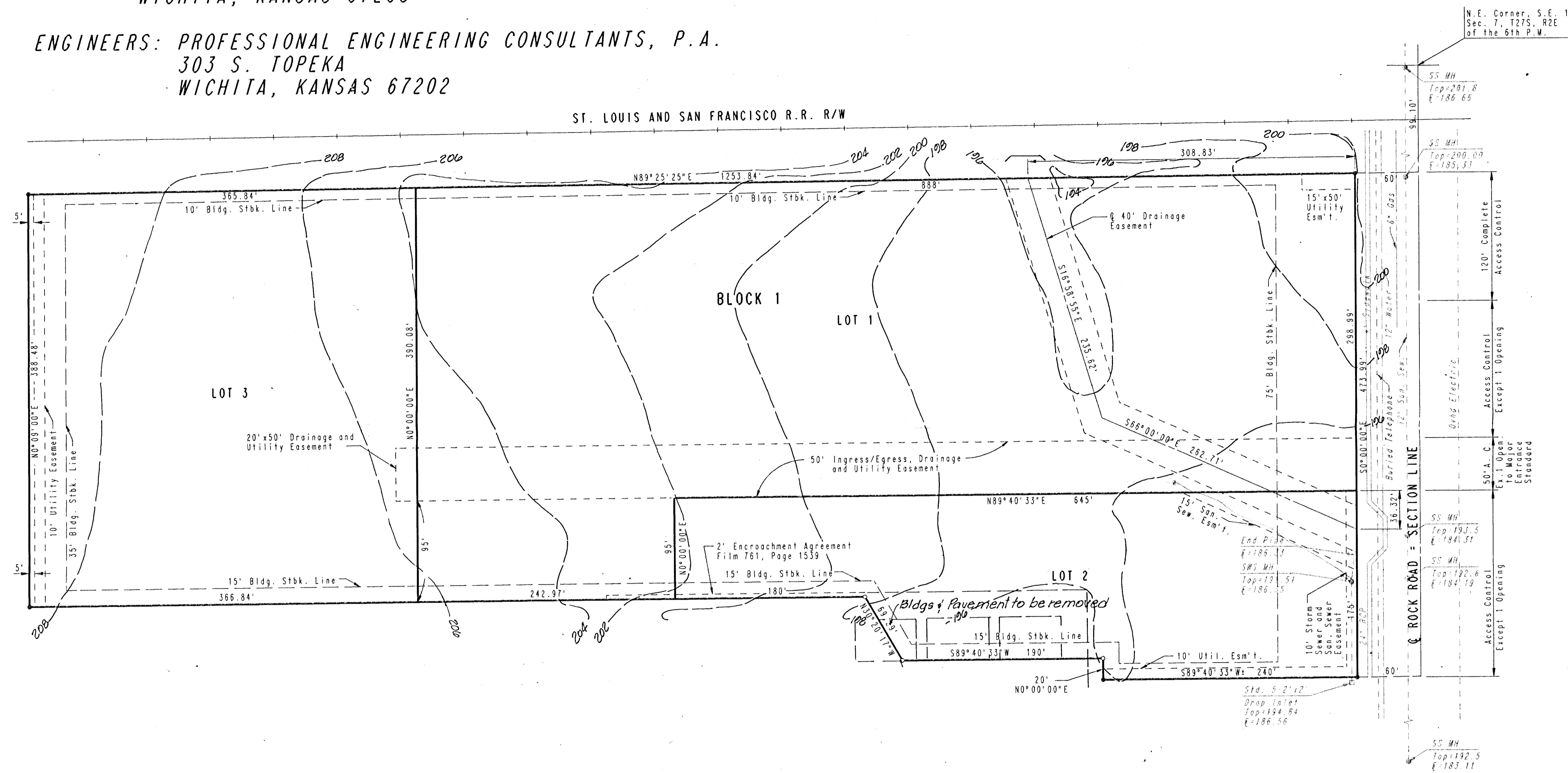


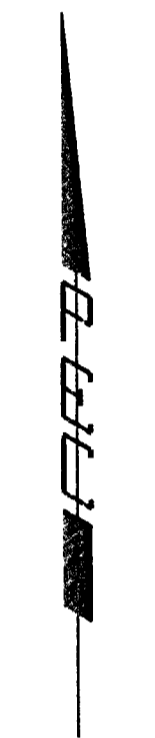
VICINITY MAP OF C.C.R. 3RD ADDITION

OWNERS: C.C.R. ASSOCIATES, A KANSAS PARTNERSHIP AND
SECURITY STORAGE PROPERTIES, A KANSAS GENERAL PARTNERSHIP
c/o STEPHEN L. CLARK
P.O. BOX 21080
WICHITA, KANSAS 67208

ENGINEERS: PROFESSIONAL ENGINEERING CONSULTANTS, P.A.
303 S. TOPEKA
WICHITA, KANSAS 67202



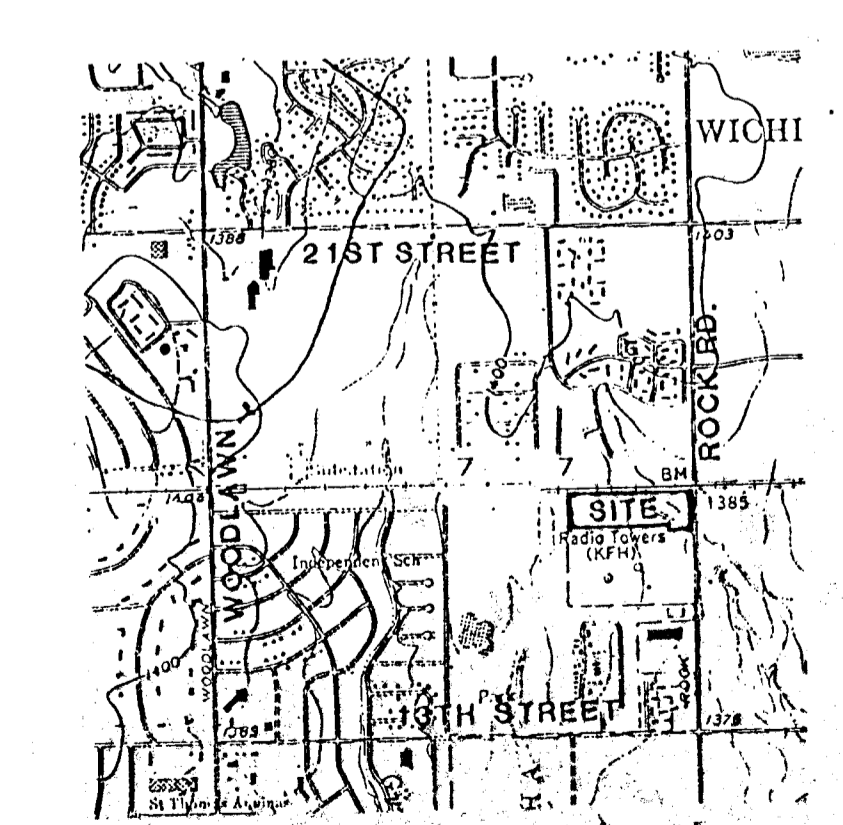
N.E. Corner, S.E. 1/4
Sec. 7, T27S, R2E
of the 6th P.M.



SCALE: 1"=60'
● = IRON FOUND
○ = 3/4" IRON SET
A.C. = ACCESS CONTROL

B.M. - CITY OF WICHITA BENCH MARK DISC, 42' NORTH AND
38' EAST OF THE CENTERLINE OF ROCK ROAD AND
13TH STREET NORTH. ELEV. = 186.849 CITY DATUM
B.M. - CITY OF WICHITA BENCH MARK DISC, 28' EAST OF
CENTERLINE OF ROCK ROAD AND 51' NORTH OF
CENTERLINE OF RAILROAD TRACKS. ELEV. = 199.701 CITY DATUM
FOR ADDITIONAL BUILDING SETBACK LINES SEE C.U.P. D.P. - 215.
AMENDMENT NUMBER ONE, ON FILE AT THE WICHITA-METROPOLITAN
AREA PLANNING DEPARTMENT.

SANITARY SEWER
F-296, J-205
STORM SEWER
D-18



AREA MAP