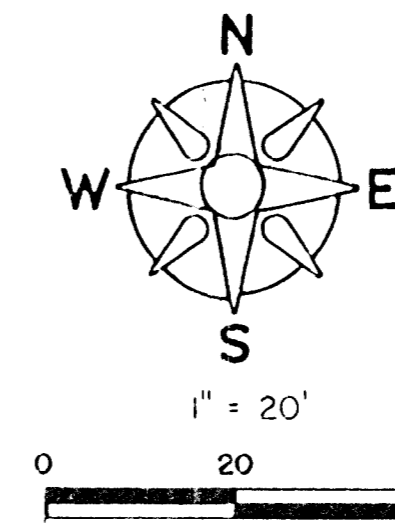


LEGEND -

- O.E. = Overhead Electric
- U.E. = Underground Electric
- O.T. = Overhead Telephone
- U.P. = Utility Pole
- T.S.B. = Telephone Splice Box
- U.T. = Underground Telephone
- M.P. = Spot Elevation
- G = Gas Main
- FM = Force Main (San. Sewer)

BENCHMARK -

R.R. Spk. in Utility Pole, 80' W & 25' N. of S.E. Cor., S.W. 1/4, Sec. 3, T. 28S., R. 1W. Elev = 117.23 City Datum.
Add 100.00 to spot elevations to convert to City Datum.



SKETCH PLAT

PRELIMINARY PLAT

OF

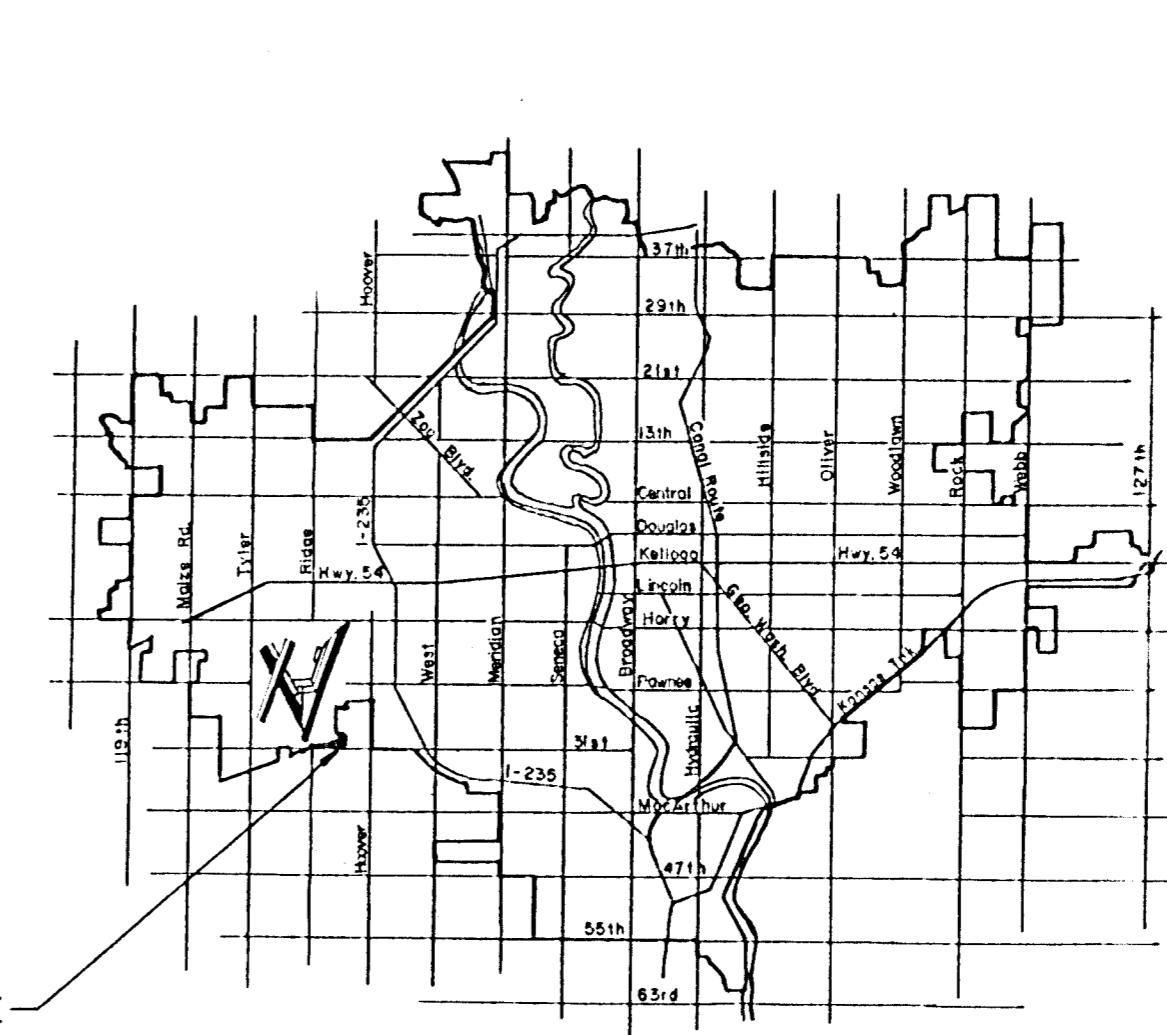
C. E. C. U. ADDITION
TO SEDGWICK CO., KANSAS

LEGAL DESCRIPTION

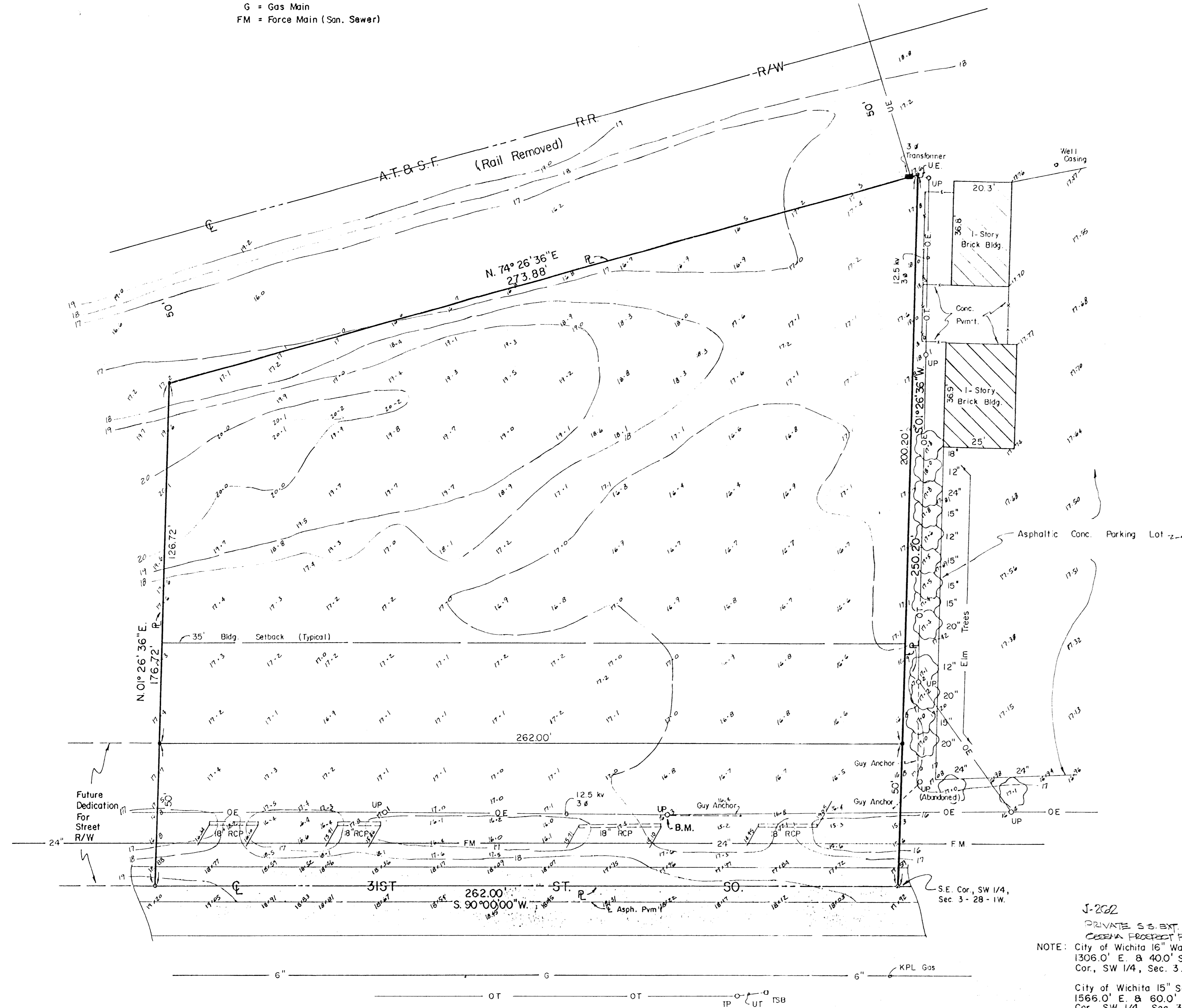
THE EAST 262.0 FEET OF THE SOUTHWEST QUARTER OF SECTION 3, TOWNSHIP 28 SOUTH, RANGE 1 WEST OF THE 6TH P.M., SEDGWICK COUNTY, KANSAS, LYING SOUTH OF THE A.T. & S.F. RAILROAD RIGHT-OF-WAY.

Owner - Cessna Aircraft Co.

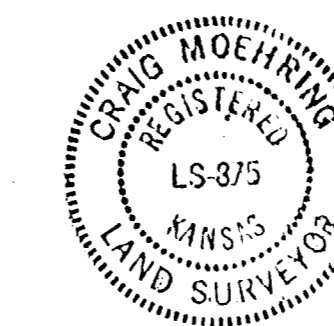
Area (Net) = 42,826.52 Sq. Ft. - 0.98 Ac. ±



VICINITY MAP



J-2022
PRIVATE S.S. EXT. FOR
CESSNA PROJECT PLANT
NOTE: City of Wichita 16" Water Main,
1306.0' E. & 40.0' S. of SE
Cor., SW 1/4, Sec. 3.
City of Wichita 15" San. Sewer,
1566.0' E. & 60.0' S. of SE
Cor., SW 1/4, Sec. 3.



MOEHRING & ASSOCIATES
CONSULTING ENGINEERS
WICHITA
Nov. 15, 1991