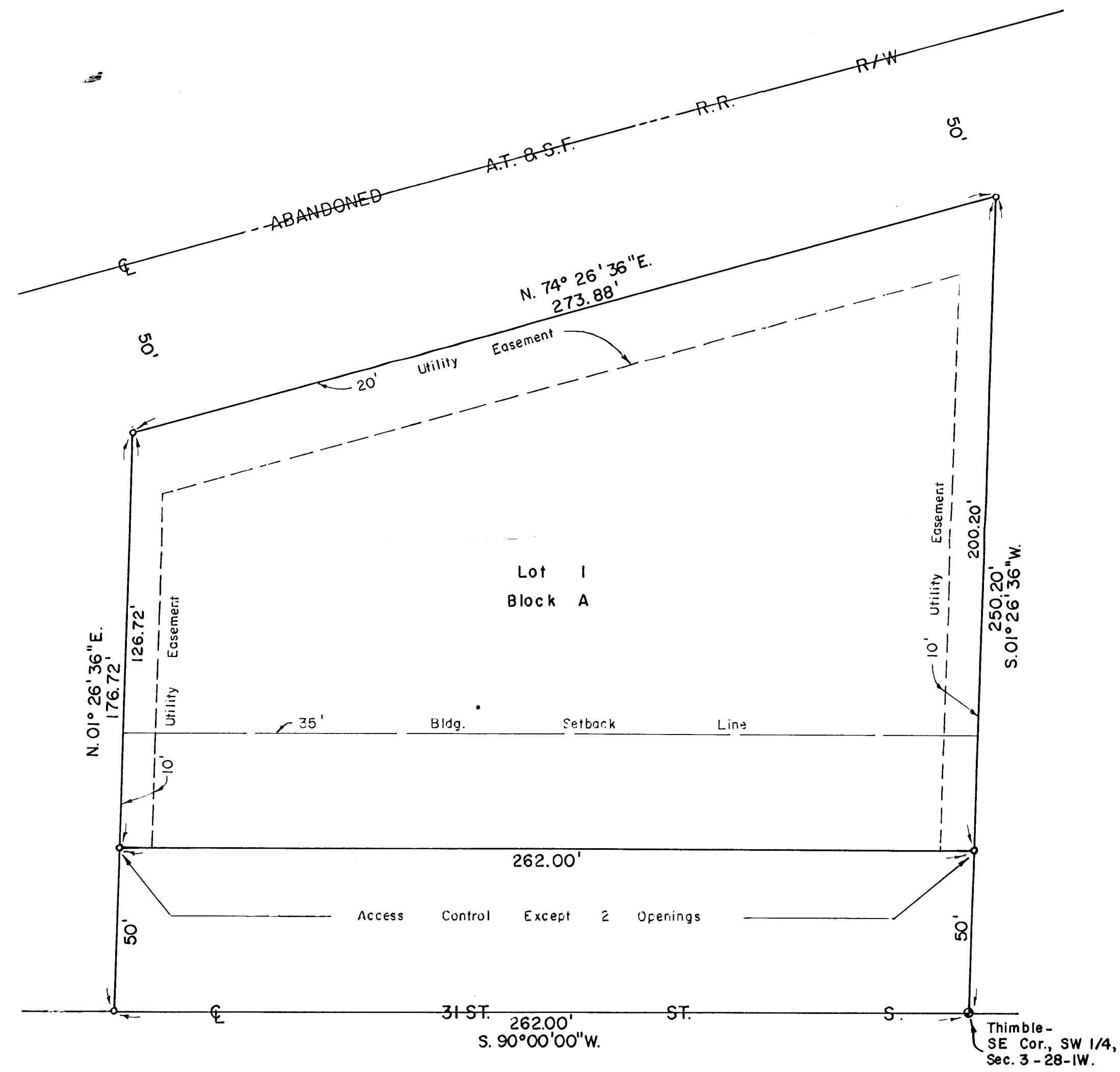


# C. E. C. U. ADDITION

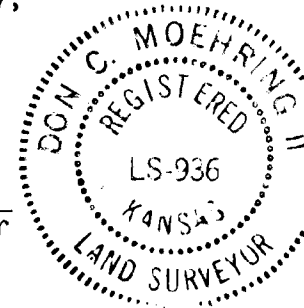
## TO SEDGWICK CO., KANSAS



STATE OF KANSAS, COUNTY OF SEDGWICK, SS:

I, Don C. Moehring II, a Registered Land Surveyor in said State and County, do hereby certify that I have surveyed and platted "C.E.C.U. ADDITION", Sedgwick County, Kansas, into a Lot, a Block and a Street, the same being accurately set forth on the accompanying plat and described as being the East 262.0 Feet of the Southwest Quarter of Section 3, Township 28 South, Range 1 West of the 6th P.M., Sedgwick County, Kansas, lying South of the A.T. & S.F. Railroad Right-of-way.

Don C. Moehring II \_\_\_\_\_ Surveyor



Know all men by these presents that we the undersigned, property owners of the land as above set forth in the Surveyor's certificate, have caused the same to be surveyed and platted into a Lot, a Block and a Street, to be known as "C.E.C.U. ADDITION", Sedgwick County, Kansas. Easements for the construction and maintenance of public utilities, as indicated on the accompanying plat, are hereby granted. All abutter's rights of access to or from 31st Street South, over and across the South line of Lot 1, Block A, are hereby granted to the appropriate Governing Body, provided however, that Lot 1, Block A, shall have access to 31st Street South at 2 locations, to be determined by the appropriate Engineer.

THE CESSNA AIRCRAFT COMPANY

L. Peter Larson \_\_\_\_\_ Sr. Vice President

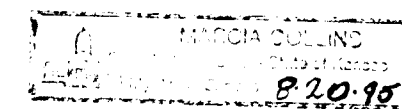
Tom Wakefield \_\_\_\_\_ General Counsel & Ass't. Secretary

STATE OF KANSAS, COUNTY OF SEDGWICK, SS:

Be it remembered that this 30th day of JANUARY, 1992, before me, a Notary Public in and for said State and County, came The Cessna Aircraft Company by L. Peter Larson, Sr. Vice President, and Tom Wakefield, General Counsel & Ass't. Secretary, on behalf of the Company, to me personally known to be the same persons who executed the foregoing instrument of writing and duly acknowledged the execution of the same on behalf of and as the act and deed of said Company. In testimony whereof I have hereunto set my hand and affixed my notarial seal the day and year above written.

Marisa Collins \_\_\_\_\_ Notary Public

My Commission Expires 20 August 1995



This plat of "C.E.C.U. ADDITION", Sedgwick County, Kansas, has been submitted to and approved by the Wichita-Sedgwick County Metropolitan Area Planning Commission.

Dated this 30th day of JANUARY, 1992.

WICHITA-SEDGWICK COUNTY METROPOLITAN AREA PLANNING COMMISSION

Christopher J. Goebel \_\_\_\_\_, Chairman

Marvin S. Krout \_\_\_\_\_, Secretary

This plat has been approved and all dedications shown hereon, if any, accepted by the City Council of the City of Wichita, Kansas, this 25 day of February, 1992.

Bob Knight \_\_\_\_\_, Mayor

Pat Burnett \_\_\_\_\_, Deputy City Clerk

This plat has been approved and all dedications shown hereon, if any, accepted by the Board of Commissioners of Sedgwick County, Kansas, this \_\_\_\_\_ day of \_\_\_\_\_, 1992.

Betsy Gwin \_\_\_\_\_, Chair

Mark F. Schroeder \_\_\_\_\_, Chair Pro-Tem

Paul W. Hancock \_\_\_\_\_, Commissioner

Bernard A. Hentzen \_\_\_\_\_, Commissioner

Billy Q. McCray \_\_\_\_\_, Commissioner

Attest: Don Wright \_\_\_\_\_, County Clerk

STATE OF KANSAS, COUNTY OF SEDGWICK, SS.

This is to certify that this instrument was filed for record in the Register of Deeds Office at \_\_\_\_\_ on the \_\_\_\_\_ day of \_\_\_\_\_, 1992.

Pat Kettler \_\_\_\_\_, Register of Deeds

Ed Resa \_\_\_\_\_, Deputy

Entered on transfer record this \_\_\_\_\_ day of \_\_\_\_\_, 1992.

Don Wright \_\_\_\_\_, County Clerk

