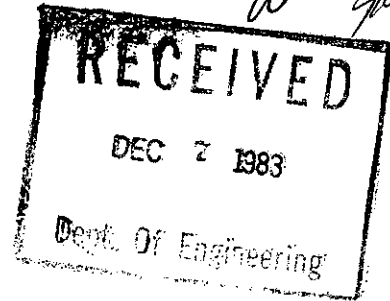


Kansas Department of Transportation

December 5, 1983



K-254
Sedgwick County

Mr. Robert A. Lakin
Director of Planning
Wichita-Sedgwick County Metropolitan
Area Planning Commission
City Hall-Tenth Floor
455 North Main Street
Wichita, Kansas 67202

Re: S/D 83-109-Preliminary plat of Chisholm Creek Commerce
Center, located south of K-254 between Hydraulic and
Hillside in Wichita, Kansas.

Dear Mr. Lakin:

The access control that was described on the above referenced preliminary plat is accurate except as noted on the attached print.

The right of way and access control for the K-254 project was purchased in 1963. The traffic volumes at 45th and Hillside have increased substantially in the past twenty years. It appears the Wichita-Sedgwick County Metropolitan Area Planning Commission would be justified in restricting Lot 54, Block 3 to access to the interior road system for the development, similar to all the other lots within the subdivision.

The intersection of 45th and Hillside is a key access point to K-254 and the interstate system and the intersection should remain as free from access points as possible to protect the traffic carrying capacity of the intersection. The intersection will undoubtedly require signalization and channelization in the future and additional access near the intersection will jeopardize the effectiveness of such improvements.

Very truly yours,

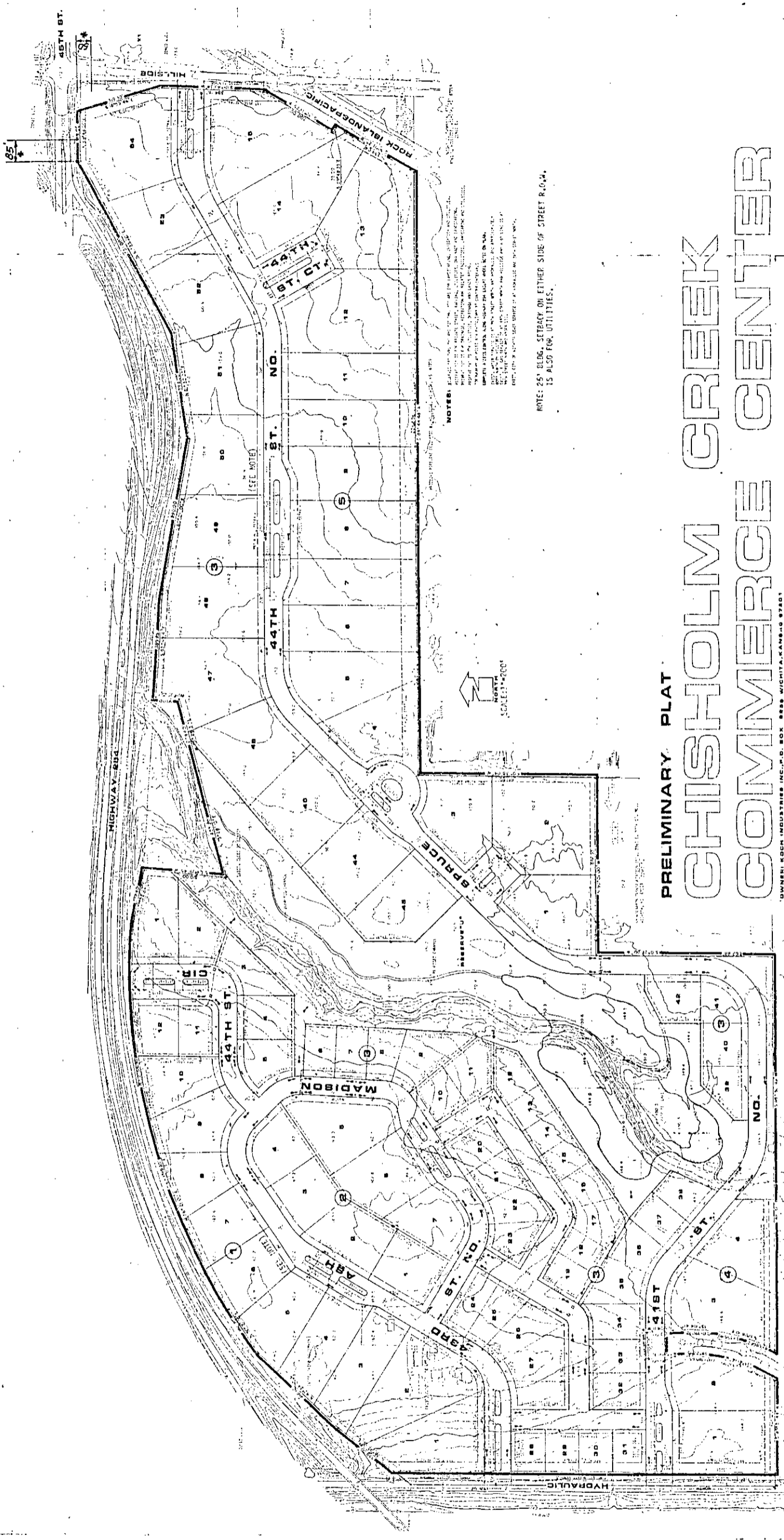
W. D. Predmore
Director of Engineering and Design

WDP:FJR:KJG:ld

cc: Milton S. Fry, District Engineer, Hutchinson, Ks
>Mr. Bill McKinley, Traffic Engineer, City of Wichita



*: Designates existing Access Control



NOTE: 25' BLDG. SETBACK ON EITHER SIDE OF STREET R.O.W.
 IS ALSO FOR UTILITIES.

PRELIMINARY PLAT
CHISHOLM CREEK
COMMERCE CENTER
 OWNED BY KOCOR INDUSTRIES INC., P.O. BOX 8888 WICHITA, KANSAS 67208