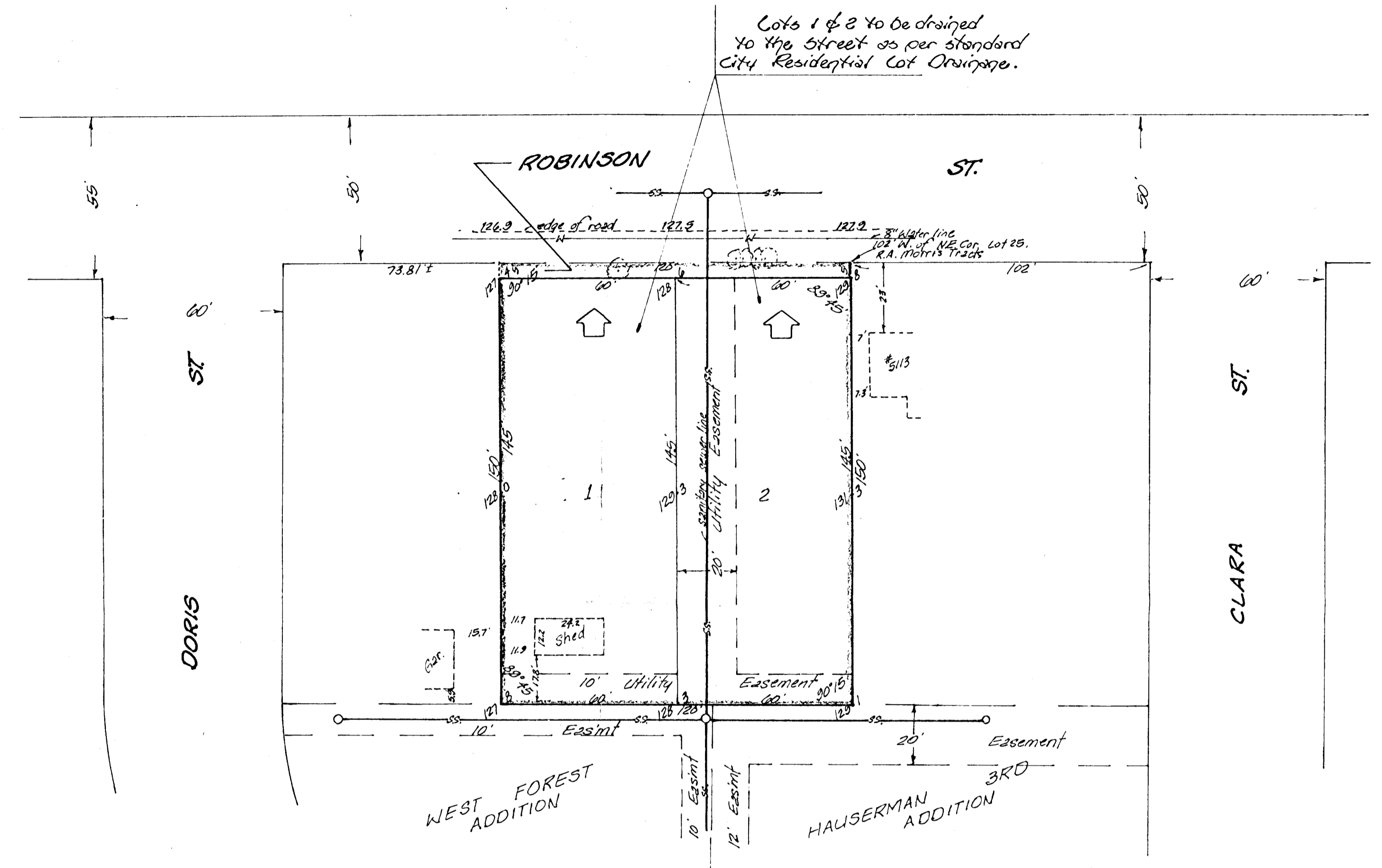


Bench mark:
 City disc. 33 feet west and 42
 feet south of centerlines of
 Anna and 9th St. No.
 Elevation = 124.64 City Datum



Drainage Plan
C.N.W. ADDITION
 PART OF LOT 25, R.A. MORRIS TRACTS,
 SEDGWICK COUNTY, KANSAS

OWNER: Marie C. Wells