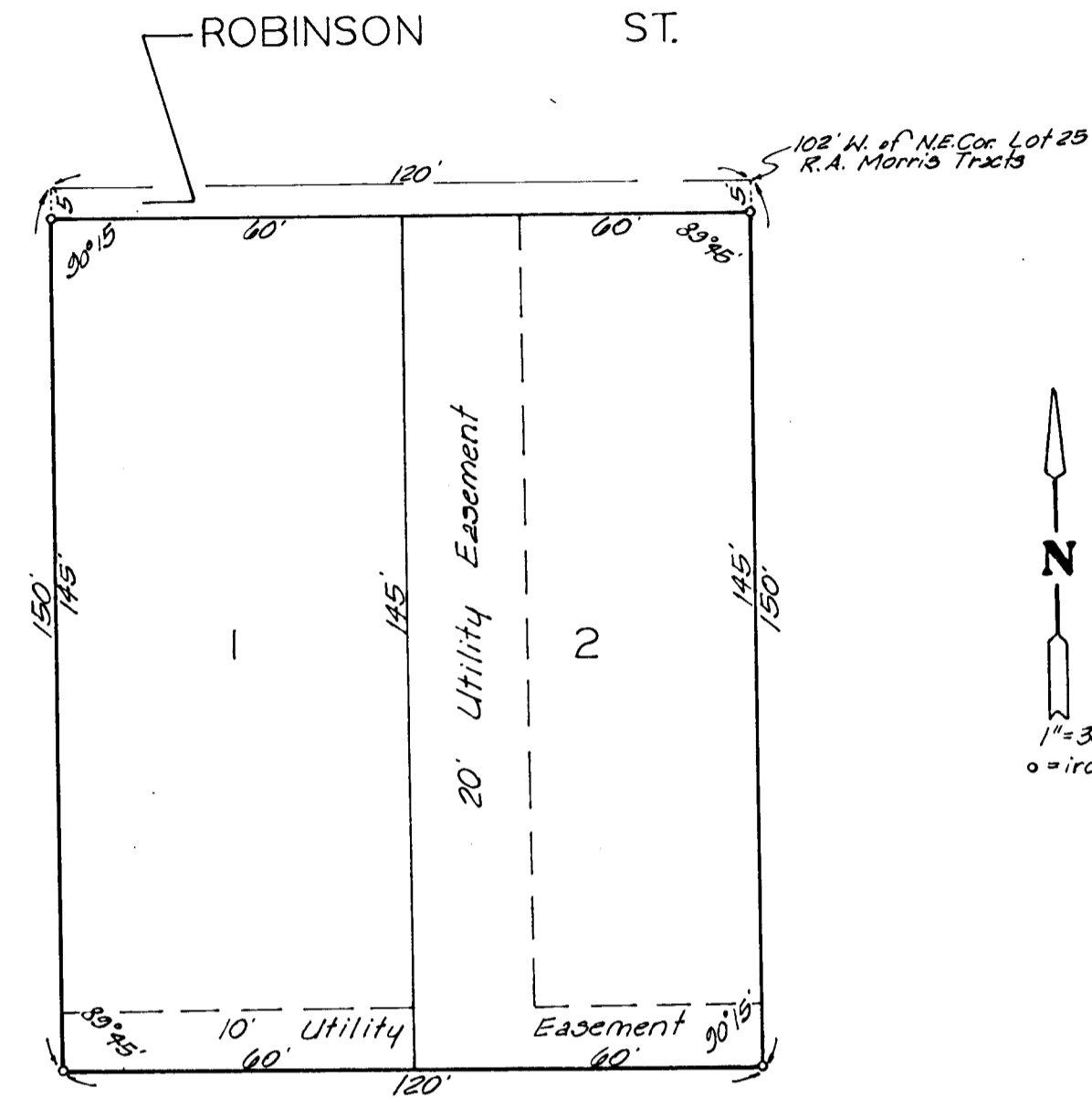


# C.N.W. ADDITION

WICHITA, KANSAS



State of Kansas } ss. We, Baughman Company, P.A.  
 Sedgwick County } Surveyors in aforesaid county and state do hereby  
 certify that we have surveyed and platted "C.N.W.  
 ADDITION," Wichita, Kansas, and that the accompany-  
 ing plat is a true and correct exhibit of the  
 property surveyed described as and being a replat  
 of the west 120 feet of the east 222 feet of the  
 north 150 feet of Lot 25, R.A. Morris Tracts, Sedgwick  
 County, Kansas. Being situated in the N.W. 1/4 of Sec. 14,  
 Twp. 27-S, R-1-W. Easements are vacated by virtue of  
 K.S.A. 1970 Supp. 12-512 (b).  
 Aug. 12, 1981 Date Baughman Company P.A.

*John E. Lundblade* Surveyor  
 John E. Lundblade

Know all men by these presents  
 that I, the undersigned, have caused the land de-  
 scribed in the surveyors certificate to be platted  
 into lots and a street to be known as "C.N.W. ADDI-  
 TION," Wichita, Kansas. The easements are hereby  
 granted as indicated for the construction and mainte-  
 nance of all public utilities. The street is hereby  
 dedicated to and for the use of the public.

*Marie C. Wells*  
 Marie C. Wells

This plat of "C.N.W. ADDITION,"  
 Wichita, Kansas, has been submitted to and approved  
 by the Wichita-Sedgwick County Metropolitan Area  
 Planning Commission, Wichita, Kansas. Dated this  
 4<sup>TH</sup> day of JUNE, 1981.

Wichita-Sedgwick County Metropolitan Area Planning  
 Commission

*James C. Gardner II* Vice-Chairman  
 James C. Gardner II  
*Robert A. Lakin* Secretary  
 Robert A. Lakin

This plat approved and all dedica-  
 tions shown hereon accepted by the Board of Com-  
 missioners of the City of Wichita, Kansas, this  
 day of 1981.

*R.C. Brown* Mayor  
 R.C. Brown  
*Donald C. Bisick* City Clerk  
 Donald C. Bisick

This plat approved and all dedica-  
 tions shown hereon accepted by the Board of Com-  
 missioners of Sedgwick County, Kansas, this  
 day of 1981.

Chairman  
 Donald E. Grapp  
 Commissioner  
 Jack Spraff  
 Commissioner  
 Tom Scott  
 County Clerk  
 Dorothy K. White

State of Kansas } ss. The foregoing instrument was  
 Sedgwick County } acknowledged before me this 15<sup>TH</sup> day of SEPTEMBER  
 1981, by Marie C. Wells, a single person. In testimony  
 whereof, I have hereunto set my hand and affixed  
 my notarial seal the day and year above written.

My Comm. Exp. 6-9-85  
*Catherine E. Wells* Notary Public  
 Catherine E. Wells

Entered on transfer record this  
 day of 1981.  
 Dorothy K. White County Clerk

State of Kansas } This is to certify that this plat  
 Sedgwick County } has been filed for record in the office of the Register  
 of Deeds this day of 1981 at  
 o'clock M; and is duly recorded.  
 Belle F. McCant Register of Deeds  
 Pat Kettler Deputy