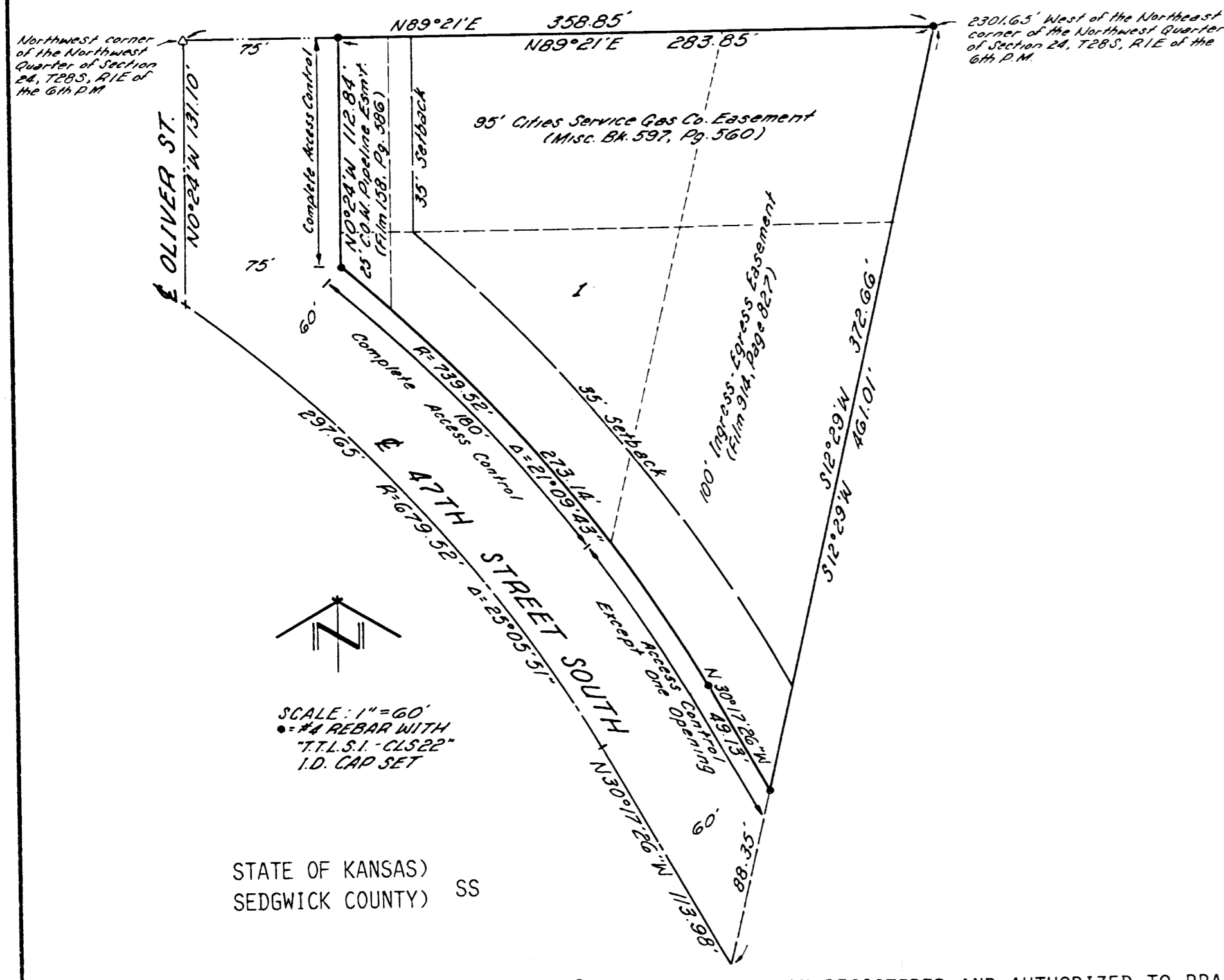


Jack Caldwell One

JACK CALDWELL ONE SEDGWICK COUNTY, KANSAS

NW 1/4 SEC. 24, T28S, R1E



TERRA TECH LAND SURVEYING, INC., A CORPORATION REGISTERED AND AUTHORIZED TO PRACTICE LAND SURVEYING IN THE STATE OF KANSAS, HEREBY CERTIFIES THAT IT HAS SURVEYED AND PLATTED "JACK CALDWELL ONE", SEDGWICK COUNTY, KANSAS, AND THE ACCOMPANYING PLAT IS A TRUE AND CORRECT EXHIBIT OF SUCH SURVEY DESCRIBED AS FOLLOWS:

A TRACT OF LAND IN THE NORTHWEST QUARTER OF SECTION 24, TOWNSHIP 28 SOUTH, RANGE 1 EAST OF THE SIXTH PRINCIPAL MERIDIAN, SEDGWICK COUNTY, KANSAS, DESCRIBED AS FOLLOWS:

BEGINNING AT A POINT ON THE NORTH LINE OF SAID NORTHWEST QUARTER OF SECTION 24, SAID POINT BEING AT AN ASSUMED BEARING OF NORTH 89° 21' EAST, A DISTANCE OF 2301.65 FEET FROM THE NORTHEAST CORNER OF SAID NORTHWEST QUARTER; THENCE SOUTH 12° 29' WEST, A DISTANCE OF 958.79 FEET TO THE NORTH LINE OF THE SOUTH 1726.57 FEET OF SAID NORTHWEST QUARTER; THENCE WEST ALONG THE NORTH LINE OF THE SOUTH 1726.57 FEET OF SAID NORTHWEST QUARTER TO THE WEST LINE OF SAID NORTHWEST QUARTER OF SECTION 24; THENCE NORTH ON THE WEST LINE OF SAID NORTHWEST QUARTER TO THE NORTHWEST CORNER OF SAID NORTHWEST QUARTER OF SECTION 24; THENCE EAST ALONG THE NORTH LINE OF THE NORTHWEST QUARTER TO THE POINT OF BEGINNING, EXCEPT THAT PART LYING SOUTH OF THE CENTERLINE OF 47TH STREET SOUTH.

BEING MORE PARTICULARLY DESCRIBED AS FOLLOWS:

BEGINNING AT THE NORTHWEST CORNER OF SAID NORTHWEST QUARTER; THENCE NORTH 89° 21' EAST ON THE NORTH LINE OF SAID QUARTER A DISTANCE OF 358.85 FEET, MORE OR LESS, TO THE INTERSECTION WITH THE WESTERLY LINE OF MCCONNELL AIR FORCE BASE; THENCE SOUTH 12° 29' WEST ON SAID WESTERLY LINE, A DISTANCE OF 461.01 FEET, MORE OR LESS, TO THE INTERSECTION WITH THE CENTERLINE OF THE 1966 REALIGNMENT OF 47TH STREET SOUTH AS DESCRIBED IN MISCELLANEOUS BOOK 587 AT PAGE 66; THENCE NORTH 30° 17' 26" WEST ON SAID CENTERLINE A DISTANCE OF 113.98 FEET TO A POINT OF CURVATURE OF A CURVE TO THE LEFT WITH A RADIUS OF 679.52 FEET; THENCE ON SAID CURVE WITH A CHORD BEARING NORTH 42° 50' 23" WEST A DISTANCE OF 295.28 FEET, AN ARC LENGTH OF 297.65 FEET TO THE INTERSECTION WITH THE WEST LINE OF SAID NORTHWEST QUARTER; THENCE NORTH 0° 24' WEST ON SAID WEST LINE A DISTANCE OF 131.10 FEET TO THE POINT OF BEGINNING.

KNOW ALL MEN BY THESE PRESENTS THAT I, THE UNDERSIGNED OWNER OF THE LAND DESCRIBED IN THE SURVEYOR'S CERTIFICATE, HAVE CAUSED THE SAME TO BE SURVEYED AND PLATTED INTO A LOT AND STREETS TO BE KNOWN AS "JACK CALDWELL ONE", SEDGWICK COUNTY, KANSAS. THE STREETS ARE HEREBY DEDICATED TO AND FOR THE USE OF THE PUBLIC. COMPLETE ACCESS CONTROL TO OLIVER STREET OVER AND ACROSS THE WEST LINE OF LOT 1 IS HEREBY GRANTED TO THE APPROPRIATE GOVERNING BODY. ACCESS CONTROL TO 47TH STREET SOUTH OVER AND ACROSS THE SOUTH LINE OF LOT 1 IS HEREBY GRANTED TO THE APPROPRIATE GOVERNING BODY, PROVIDED HOWEVER, THAT LOT 1 SHALL HAVE ACCESS TO 47TH STREET SOUTH AT ONE OPENING WHICH SHALL BE DETERMINED BY THE APPROPRIATE ENGINEER.

M. R. Bolen
M. R. BOLEN

STATE OF KANSAS)
SEDGWICK COUNTY) SS

THE FOREGOING INSTRUMENT WAS ACKNOWLEDGED BEFORE ME THIS 10th DAY OF August, 1987, BY M. R. BOLEN.

Michele R. Hall, Notary Public
MICHELE R. HALL
MY APPOINTMENT EXPIRES: 8 August 1988

STATE OF KANSAS)
SEDGWICK COUNTY) SS

THIS IS TO CERTIFY THAT THIS INSTRUMENT WAS FILED FOR RECORD IN THE REGISTER OF DEEDS OFFICE AT 10 O'CLOCK AM, ON THE 10th DAY OF August, 1987.

Pat Kettler, REGISTER OF DEEDS
PAT KETTLER

Ed Resa, DEPUTY
ED RESA

ENTERED ON TRANSFER RECORD THIS 10th DAY OF August, 1987.

Don Wright, COUNTY CLERK
DON WRIGHT

THIS PLAT OF "JACK CALDWELL ONE", SEDGWICK COUNTY, KANSAS HAS BEEN SUBMITTED TO AND APPROVED BY THE WICHITA-SEDGWICK COUNTY, METROPOLITAN AREA PLANNING COMMISSION, WICHITA, KANSAS, THIS 6th DAY OF August, 1987.

WICHITA-SEDGWICK COUNTY METROPOLITAN AREA PLANNING COMMISSION

John Terry Moore, CHAIRMAN
JOHN TERRY MOORE

Marvin S. Krout, SECRETARY
MARVIN S. KROUT



THIS PLAT APPROVED AND ALL DEDICATIONS SHOWN HEREON ACCEPTED BY THE BOARD OF COUNTY COMMISSIONERS OF SEDGWICK COUNTY, KANSAS, THIS 10th DAY OF August, 1987.

BOARD OF COUNTY COMMISSIONERS

Tom Scott, CHAIRMAN
TOM SCOTT

Mark F. Schroeder, CHAIRMAN PRO TEM
MARK F. SCHROEDER

David Bayouth, COMMISSIONER
DAVID BAYOUTH

Bernard A. Hentzen, COMMISSIONER
BERNARD A. HENTZEN

Billy O. McCray, COMMISSIONER
BILLY O. MCCRAY

ATTEST: Don Wright, COUNTY CLERK
DON WRIGHT

THIS PLAT APPROVED AND ALL DEDICATIONS SHOWN HEREON ACCEPTED BY THE CITY COUNCIL OF THE CITY OF WICHITA, KANSAS, THIS 10th DAY OF August, 1987.

WICHITA CITY COUNCIL

Robert G. Knight, MAYOR
ROBERT G. KNIGHT

Dale E. Rea, DEPUTY CITY CLERK
DALE E. REA



TERRA TECH LAND SURVEYING, INC.
T. L. DANIEL
T. L. DANIEL LS#489
19 November 1987
DATE

