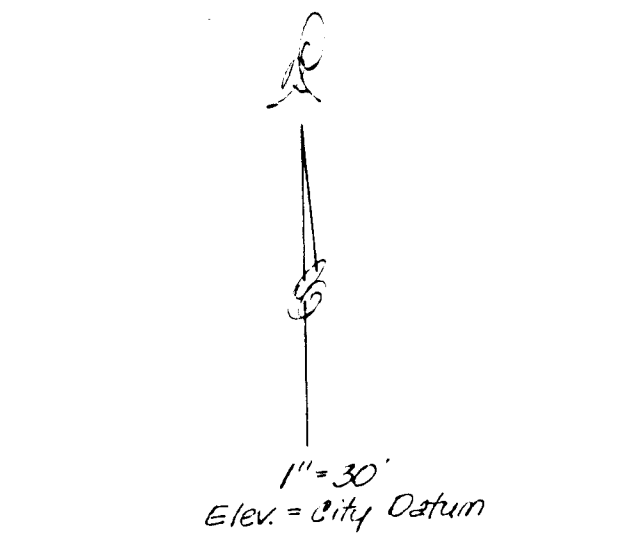
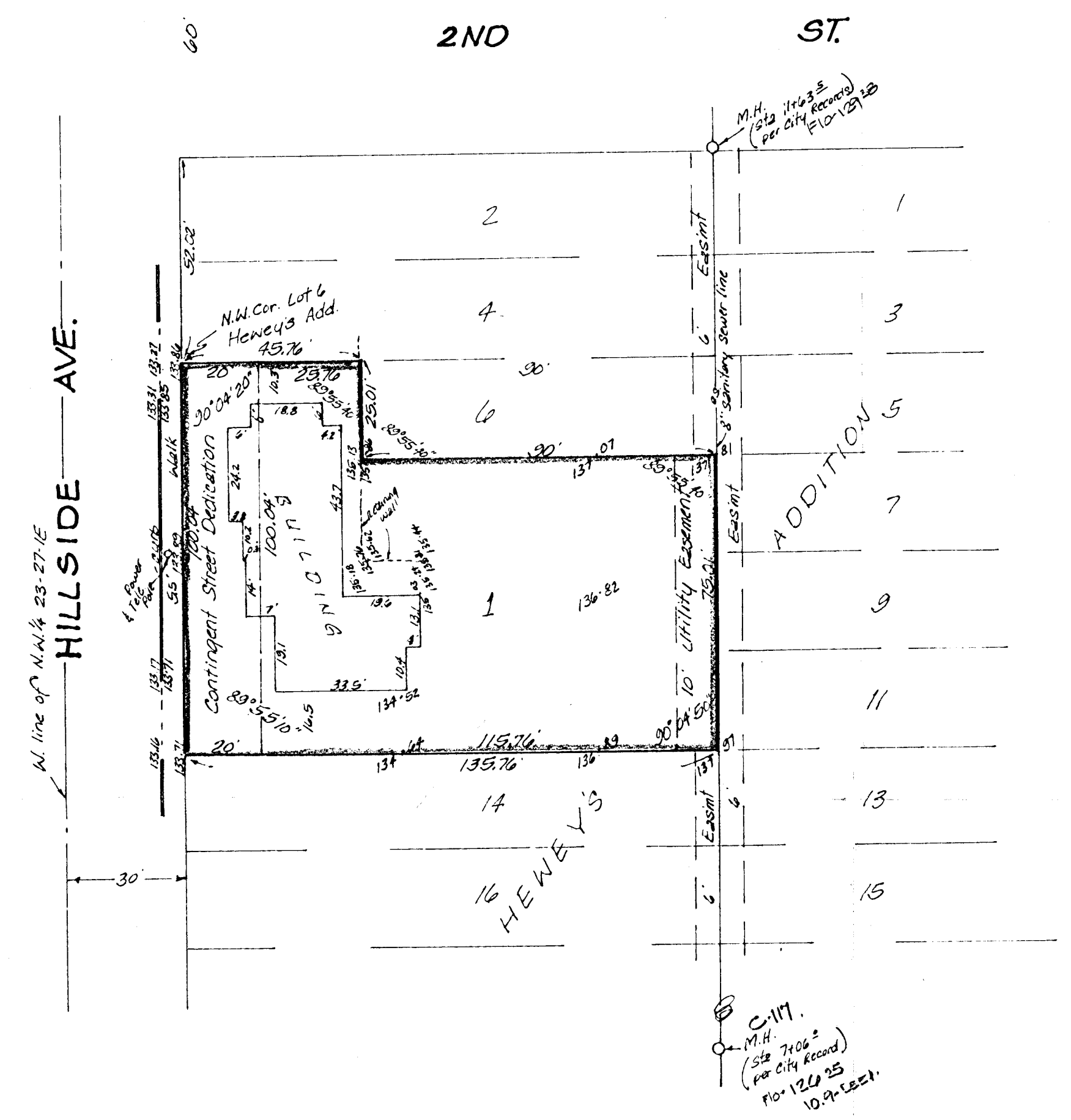


Note: 12" AC City Water Line
2009 East side of
Hillside Ave.



Lot Grading Plan:
Lot to be graded to drain to
the street when redeveloped
via approved driveways, flumes,
inlets, etc.

**SKETCH PLAT
CALIENDO 6TH ADDITION**

LOT 6, EXCEPT THE EAST 30 FEET THEREOF,
AND ALL OF LOTS 8-10-12, HEWEY'S ADDITION
TO WICHITA, KANSAS

OWNER: CALIENDO INVESTMENT CORPORATION
% RICHARD CALIENDO, PRESIDENT