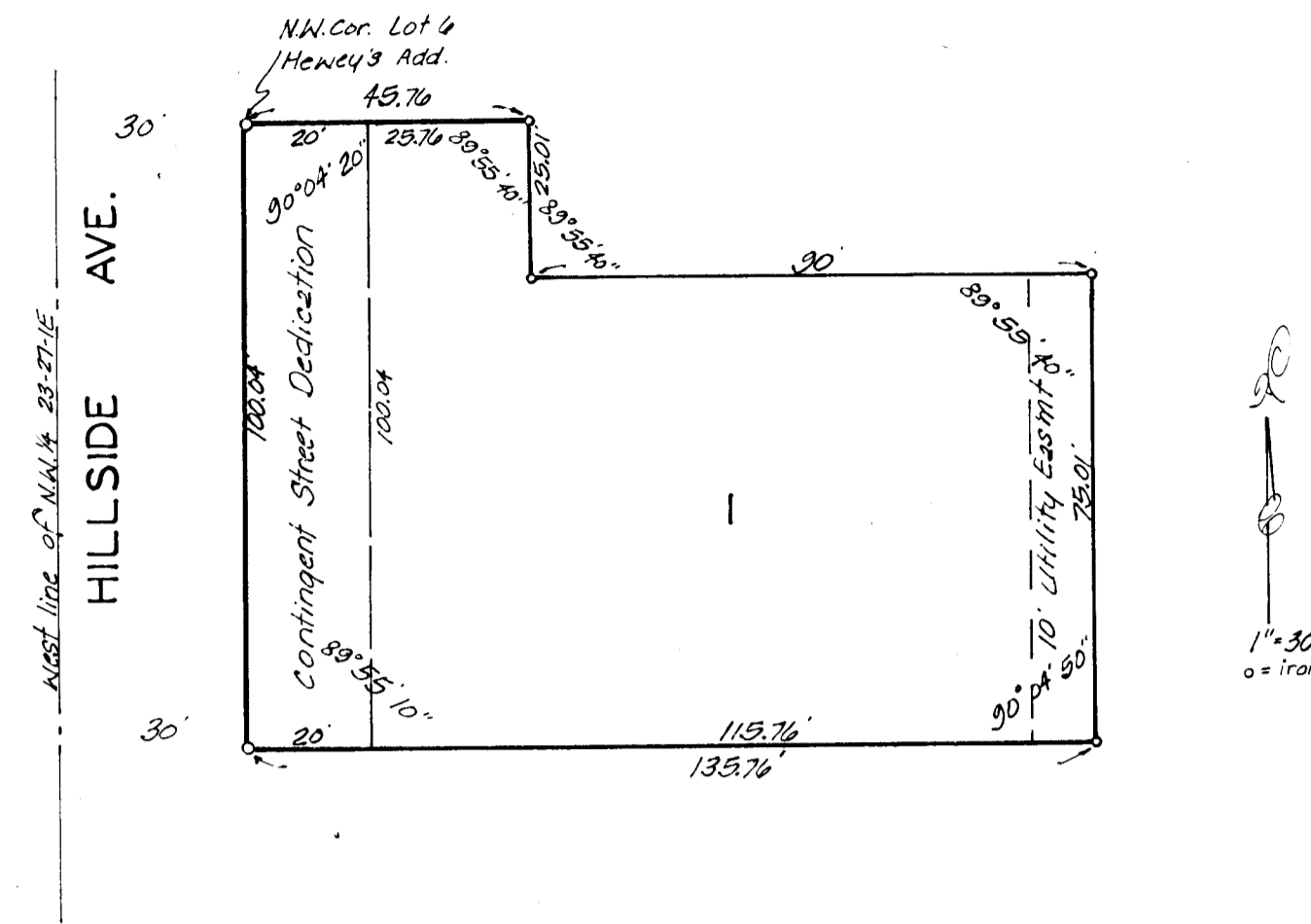


# CALIENDO 6TH ADDITION

WICHITA KANSAS



State of Kansas }  
Sedgwick County } s.s. We, Baughman Company P.A., Surveyors in aforesaid county and state do hereby certify that we have surveyed and platted "CALIENDO 6TH ADDITION," Wichita, Kansas, and that the accompanying plat is a true and correct exhibit of the property surveyed described as and being a replat of Lot 6, except the east 30 feet thereof, and all of Lots 8-10-12, Heney's Addition to Wichita, Kansas. All being situated in the N.W. 1/4 of Sec. 23, Twp-27-S, R-1-E.

Date \_\_\_\_\_  
Baughman Company, P.A.  
Surveyor  
William L. Korber

This plat of "CALIENDO 6TH ADDITION," Wichita, Kansas, has been submitted to and approved by the Wichita-Sedgwick County Metropolitan Area Planning Commission, Wichita, Kansas. Dated this \_\_\_\_\_ day of \_\_\_\_\_, 19\_\_.

Wichita-Sedgwick County Metropolitan Area Planning Commission

\_\_\_\_\_  
William J. Beebel Chairman  
\_\_\_\_\_  
Robert A. Lakin Secretary

This plat approved and all dedications shown hereon accepted by the Board of Commissioners of the City of Wichita, Kansas, this \_\_\_\_\_ day of \_\_\_\_\_, 19\_\_.

\_\_\_\_\_  
Robert A. Knight Mayor  
\_\_\_\_\_  
Donald C. Busick City Clerk

This plat approved and all dedications shown hereon accepted by the Board of Commissioners of Sedgwick County, Kansas, this \_\_\_\_\_ day of \_\_\_\_\_, 19\_\_.

\_\_\_\_\_  
Everett Patrick Chairman  
\_\_\_\_\_  
Tom Scott Commissioner  
\_\_\_\_\_  
Donald E. Stragg Commissioner  
\_\_\_\_\_  
Dorothy K. White County Clerk

Entered on transfer record this \_\_\_\_\_ day of \_\_\_\_\_, 19\_\_.

\_\_\_\_\_  
Dorothy K. White County Clerk

State of Kansas }  
Sedgwick County } s.s. This is to certify that this plat was filed for record in the office of the Register of Deeds this \_\_\_\_\_ day of \_\_\_\_\_, 19\_\_, at \_\_\_\_\_ o'clock \_\_\_\_\_ M.; and is duly recorded.

\_\_\_\_\_  
Bette F. McCurt Register of Deeds  
\_\_\_\_\_  
Pat Kettler Deputy

Know all men by these presents that I, the undersigned, have caused the land described in the surveyors certificate to be platted into a lot and street to be known as "CALIENDO 6TH ADDITION," Wichita, Kansas. The easement is hereby granted as indicated for the construction and maintenance of all public utilities.

Caliendo Investment Corporation  
\_\_\_\_\_  
Richard Caliendo President

State of Kansas }  
Sedgwick County } s.s. The foregoing instrument was acknowledged before me this \_\_\_\_\_ day of \_\_\_\_\_, 19\_\_, by Richard Caliendo, President of Caliendo Investment Corporation. In testimony whereof I have hereunto set my hand and affixed my notarial seal the day and year above written.

\_\_\_\_\_  
Notary Public  
My App. Exp. \_\_\_\_\_

We, the undersigned, holders of a mortgage on the above described property do hereby consent to this plat of "CALIENDO 6TH ADDITION," Wichita, Kansas.

Fourth National Bank and Trust Company of Wichita

State of Kansas }  
Sedgwick County } s.s. The foregoing instrument was acknowledged before me this \_\_\_\_\_ day of \_\_\_\_\_, 19\_\_, by \_\_\_\_\_ of Fourth National Bank and Trust Company of Wichita. In testimony whereof I have hereunto set my hand and affixed my notarial seal the day and year above written.

\_\_\_\_\_  
Notary Public  
My App. Exp. \_\_\_\_\_