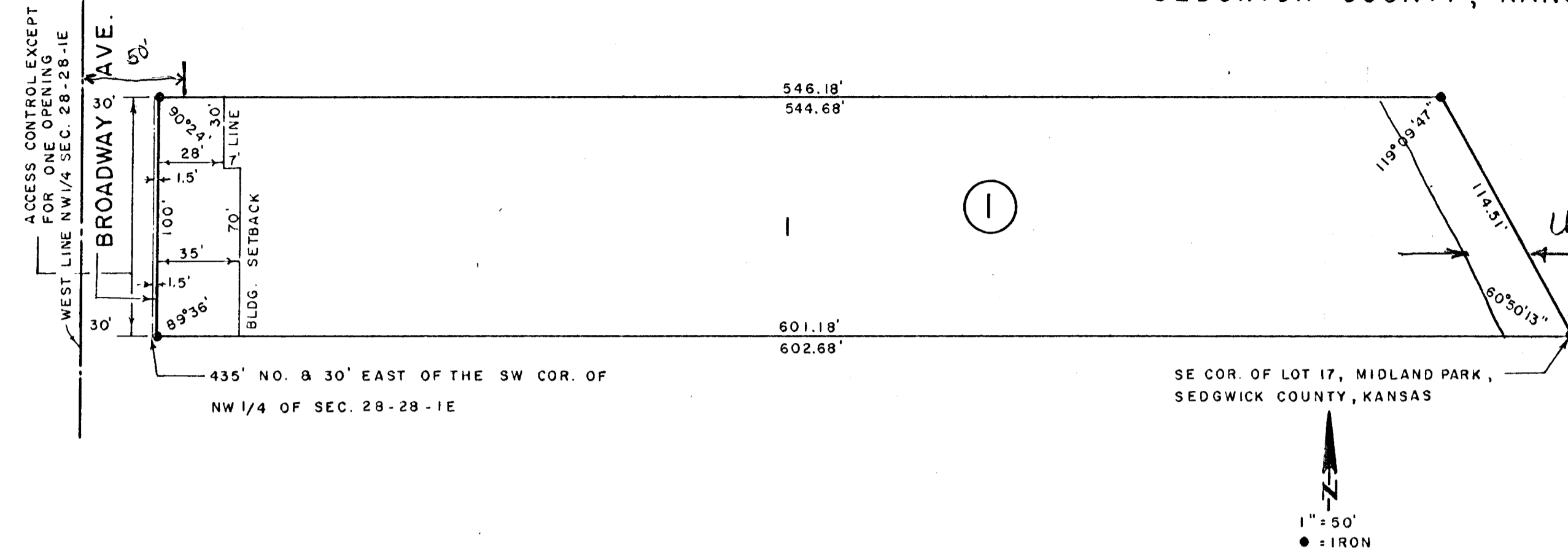


# TANDY M. ARNOLD ADDITION

SEDGWICK COUNTY, KANSAS



State of Kansas, County of Sedgwick, SS.

I, Lowell D. High, Land Surveyor in said State and County do hereby certify that I have surveyed and platted "TANDY M. ARNOLD ADDITION", Sedgwick County, Kansas and that the accompanying plat is A REPLAT OP and a true and correct exhibit of said survey described as follows: Lot 17, Midland Park, Sedgwick County, Kansas.

\_\_\_\_\_  
Lowell D. High, Land Surveyor

Know all men by these presents that I, Tandy M. Arnold, a single man, has caused the land described in the Land Surveyor's certificate to be platted into a lot, a block, and street to be known as "TANDY M. ARNOLD ADDITION", Sedgwick County, Kansas. The street is hereby dedicated to and for the use of the public.

All abutter's rights of access to or from Broadway over and across the west line of Lot 1, Block 1, are hereby granted to the appropriate governing body, provided, however, that Lot 1, Block 1 shall have access to Broadway at one location to be designated by the appropriate governing body.

\_\_\_\_\_  
Tandy M. Arnold

State of Kansas, County of Sedgwick, SS.

The foregoing instrument was acknowledged before me this \_\_\_\_ day of \_\_\_\_\_, 19\_\_\_\_ by Tandy M. Arnold, a single man.

\_\_\_\_\_  
Notary Public

My Commission expires: \_\_\_\_\_

Edith Diedrick, mortgagee of the land described in the Land Surveyor's certificate, does hereby consent to the platting of "TANDY M. ARNOLD ADDITION", Sedgwick County, Kansas.

\_\_\_\_\_  
Edith Diedrick

State of Kansas, County of Sedgwick, SS.

The foregoing instrument was acknowledged before me this \_\_\_\_ day of \_\_\_\_\_, 19\_\_\_\_ by Edith Diedrick.

\_\_\_\_\_  
Notary Public

My Commission expires: \_\_\_\_\_

This plat of "TANDY M. ARNOLD ADDITION", Sedgwick County, Kansas has been submitted to and approved by the Wichita-Sedgwick County Metropolitan Area Planning Commission, Wichita, Kansas.

Dated this \_\_\_\_ day of \_\_\_\_\_, 1981.

\_\_\_\_\_  
Wichita-Sedgwick County Metropolitan Area Planning Commission

\_\_\_\_\_  
Alvin J. Hennessy, Jr., Chairman

\_\_\_\_\_  
Robert A. Lakin, Secretary

This plat approved and all dedications shown hereon accepted by the Board of City Commissioners of the City of Wichita, Kansas, this \_\_\_\_ day of \_\_\_\_\_, 1981.

\_\_\_\_\_  
Robert C. Brown, Mayor

\_\_\_\_\_  
Donald C. Gisick, City Clerk

This plat approved and all dedications shown hereon accepted by the Board of County Commissioners of Sedgwick County, Kansas, this \_\_\_\_ day of \_\_\_\_\_, 1981.

\_\_\_\_\_  
Donald E. Gragg, Chairman

\_\_\_\_\_  
Jack Spratt, Commissioner

ATTEST: \_\_\_\_\_, Commissioner  
Tom Scott

\_\_\_\_\_  
Dorothy K. White, County Clerk

Entered on transfer record this \_\_\_\_ day of \_\_\_\_\_, 19\_\_\_\_.

\_\_\_\_\_  
Dorothy K. White, County Clerk

State of Kansas, County of Sedgwick, SS.

This is to certify that this instrument was filed for record in the Register of Deeds Office at \_\_\_\_ o'clock \_\_\_\_ m., on the \_\_\_\_ day of \_\_\_\_\_, 19\_\_\_\_.

\_\_\_\_\_  
Bette F. McCart, Register of Deeds

\_\_\_\_\_  
Pat Kettler, Deputy