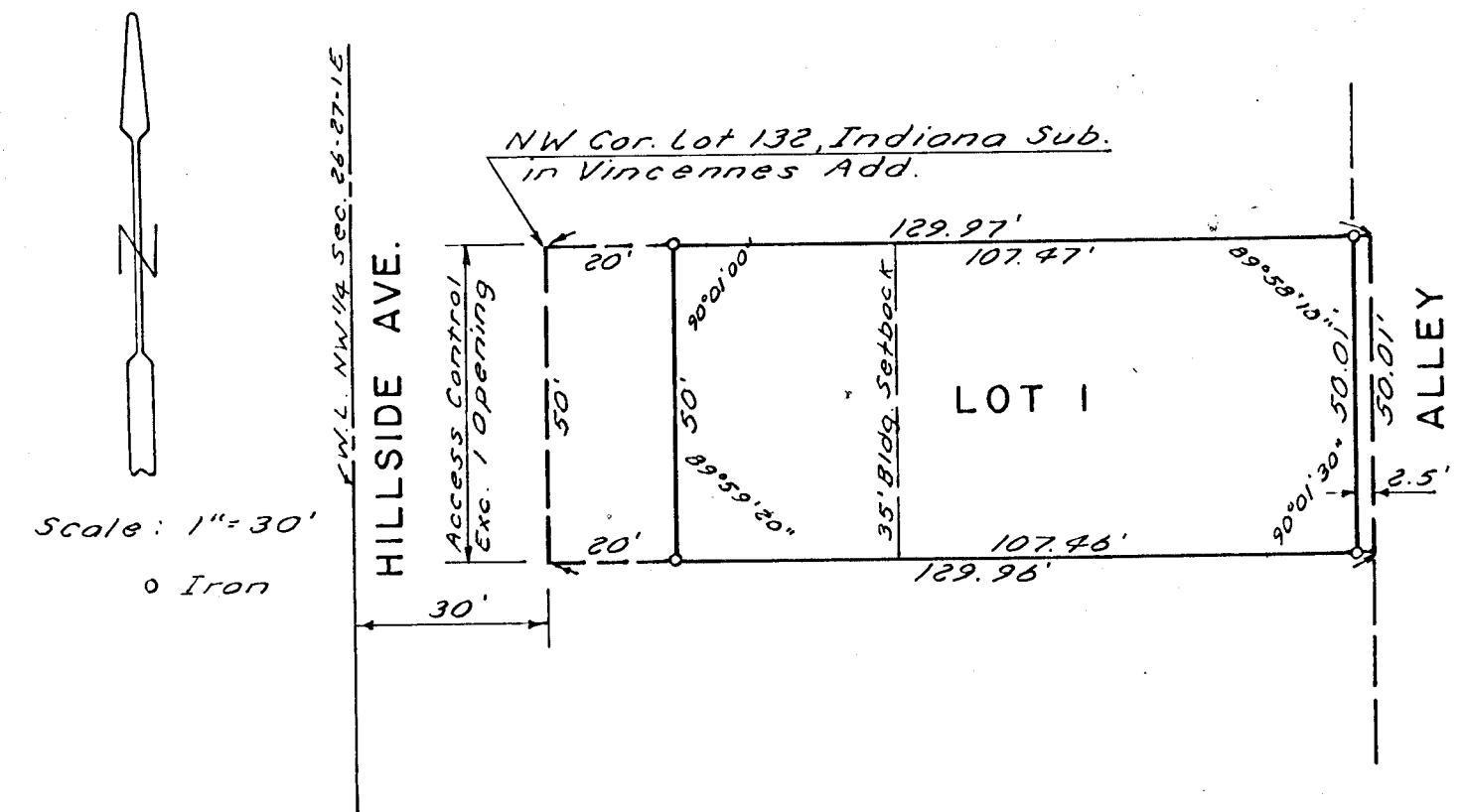


CALIENDO 7TH ADDITION

WICHITA, KANSAS



State of Kansas } S.S. We, Baughman Company, P.A.
 Sedgwick County } Surveyors in aforesaid county and state, do hereby
 certify that we have surveyed and plotted "CALIENDO
 7TH ADDITION", Wichita, Kansas, and that the accom-
 panying plat is a true and correct exhibit of the
 property surveyed, described as a replat of Lots
 132 and 134 of Indiana Subdivision in Vincennes
 Addition to Wichita, Kansas, located in the NW 1/4
 of Section 26, T27S, R1E.

Date May 6, 1981 Baughman Company, P.A.

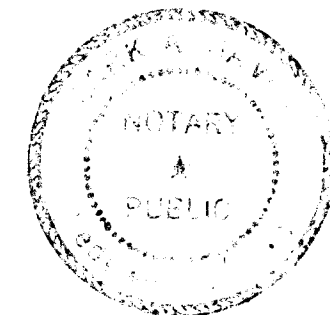
John E. Lundblade Surveyor
 John E. Lundblade

Know all men by these presents, that we,
 the undersigned, have caused the land described
 in the surveyors certificate to be platted into
 a lot, street and alley to be known as "CALIENDO
 7TH ADDITION", Wichita, Kansas. The street and
 alley is hereby dedicated to and for the use of
 the public. All abutters rights of access to Hill-
 side Ave. over and across the west line of Lot 1
 are hereby granted to the City of Wichita, Kansas,
 except, however, that Lot 1 shall have access
 to Hillside Ave. at one location, said location
 to be determined by the City Engineer.

Efton P. Gray Oleva B. Gray
 Efton P. Gray Oleva B. Gray

State of Kansas } S.S. The foregoing instrument was
 Sedgwick County } acknowledged before me this 12th day of May,
 1981, by Efton P. Gray and Oleva B. Gray, his wife.

Mark A. Gray Notary Public
 My Commission Expires 5/1/84



This plat of "CALIENDO 7TH ADDITION",
 Wichita, Kansas, has been submitted to and
 approved by the Wichita-Sedgwick County
 Metropolitan Area Planning Commission,
 Wichita, Kansas. Dated this 7th day of
May, 1981.

Wichita-Sedgwick County Metropolitan
 Area Planning Commission

Alvin J. Hennessy, Jr. Chairman
Robert A. Carlin Secretary

This plat approved and all dedications
 shown hereon accepted by the Board of City
 Commissioners, Wichita, Kansas, this 12th day
 of May, 1981.

B. C. Brown Mayor
Donald C. Gistick City Clerk

This plat approved and all dedications
 shown hereon accepted by the Board of County
 Commissioners, Sedgwick County, Kansas, this
 day of _____, 1981.

Donald E. Gragg Chairman
Jack Spratt Commissioner
Tam Scott Commissioner
Dorothy K. White County Clerk

Entered on transfer record this _____
 day of _____, 1981.

Dorothy K. White County Clerk

State of Kansas } S.S. This is to certify that this
 Sedgwick County } plat has been filed for record in the Office
 of the Register of Deeds this _____ day of _____
 1981, at _____ o'clock, _____ M., and is duly recorded.

Bella F. McCurt Register of Deeds
Pat Kattler Deputy