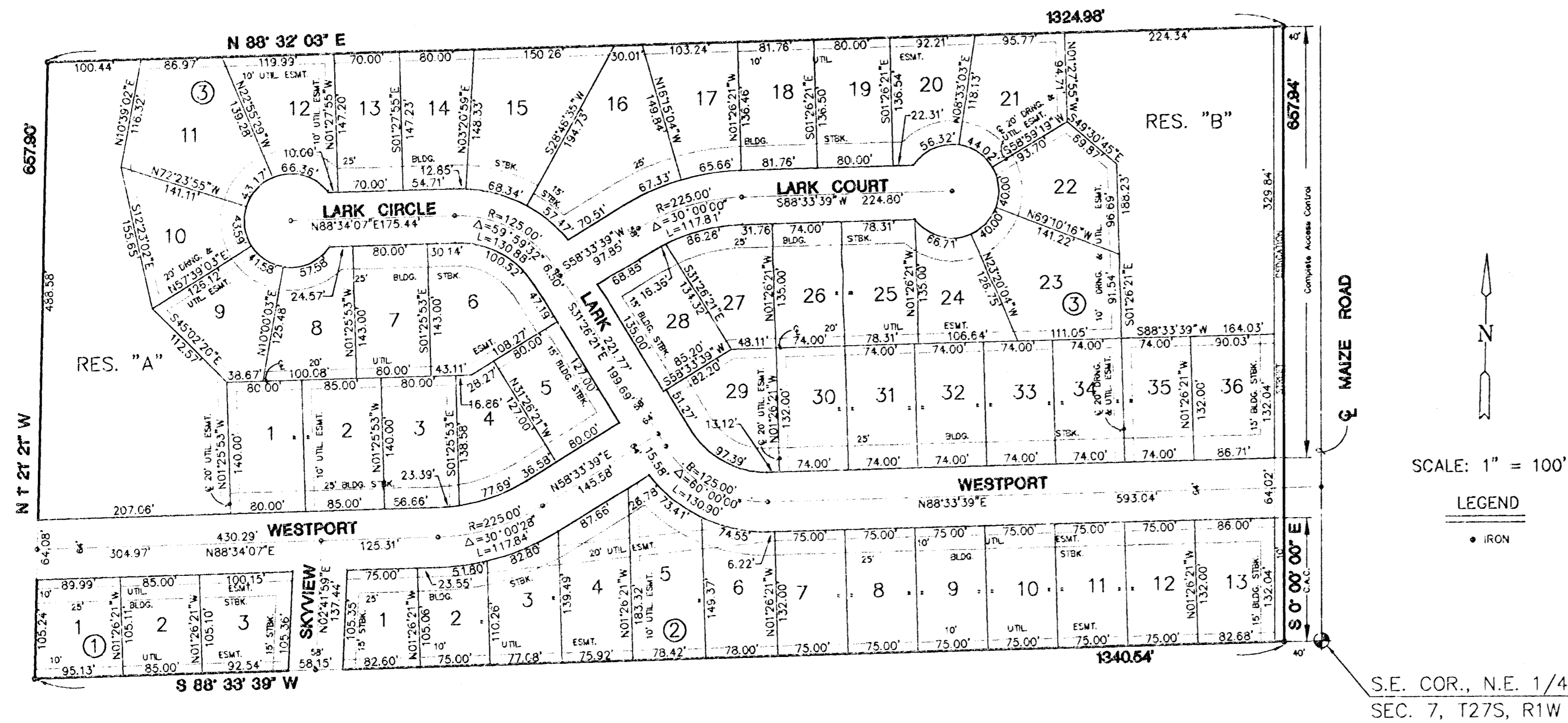


FINAL PLAT OF
ARMOUR WOODS
 AN ADDITION TO WICHITA, SEDGWICK COUNTY, KANSAS



I, Kenneth H. Bengtson, a Civil Engineer and Registered Land Surveyor in Kansas, do hereby certify that I have been in responsible charge of surveying and platting of "ARMOUR WOODS", an addition to Wichita, Sedgwick County, Kansas, into Lots, Blocks and Streets, the same being accurately set forth in the accompanying plat and described herein:

The South half of the Southeast Quarter of the Northeast Quarter of Section 7, Township 27 South, Range 1 West of the 6th Prime Meridian, Sedgwick County, Kansas, except the East 40 feet thereof.

All lots, blocks, streets, easements and building setbacks located within the above described property are being vacated and replatted by virtue of K.S.A. 12-512(b).

I hereby certify that the details of this plat are correct to the best of my knowledge and belief this _____ day of _____, 1993.

Kenneth H. Bengtson, P.E., R.L.S. #922
 Mid-Kansas Engineering Consultants, Inc.
 3500 N. Rock Road, Building #800
 Wichita, KS 67226

Know all men by these presents that we the undersigned property owners of the land as above set forth in the Civil Engineer's and Registered Land Surveyor's Certificate, have caused the same to be surveyed and platted into lots, blocks and streets, the same to be known as "ARMOUR WOODS", an addition to Wichita, Sedgwick County, Kansas. The streets are hereby dedicated to and for public use. Easements for the construction and maintenance of public utilities and drainage as indicated on the accompanying plat, are hereby granted to the city of Wichita. Reserves "A" and "B" are platted for construction and maintenance of public utilities and drainage. The Reserves shall be owned and maintained by the Homeowner's Association. All abutter's rights of access to and from Maize Road over and across the east line of "ARMOUR WOODS" are hereby granted to the city of Wichita, Kansas.

CRANMER GRASS FARMS, INC.

David D. Cranmer

STATE OF KANSAS)
 SEDGWICK COUNTY) ss.

BE IT REMEMBERED, that on this _____ day of _____, 1993, before me the undersigned, a Notary Public in and for the County and State aforesaid, came to me personally known to be the same person who executed the foregoing instrument of writing and duly acknowledged the execution of the same.

IN WITNESS WHEREOF, I have hereunto set my hand and affixed my official seal, the day and year last above written.

Notary Public _____

My appointment expires: _____

This plat of "ARMOUR WOODS", has been submitted to and approved by the Wichita-Sedgwick County Metropolitan Area Planning Commission, Wichita, Kansas.

Dated this _____ day of _____, 1993.

WICHITA-SEDGWICK COUNTY METROPOLITAN AREA PLANNING COMMISSION

_____, Chairman

_____, Secretary

This plat approved and all dedications shown hereon, if any, accepted by the City Council of the City of Wichita, Kansas, this _____ day of _____, 1993.

_____, Mayor

_____, City Clerk

Entered on transfer record this _____ day of _____, 1993.

_____, County Clerk

STATE OF KANSAS)
 SEDGWICK COUNTY) ss.

This is to certify that this instrument was filed for record in the Register of Deeds office this _____ day of _____, 1993.

_____, Register of Deeds

_____, Deputy

Ed Resa