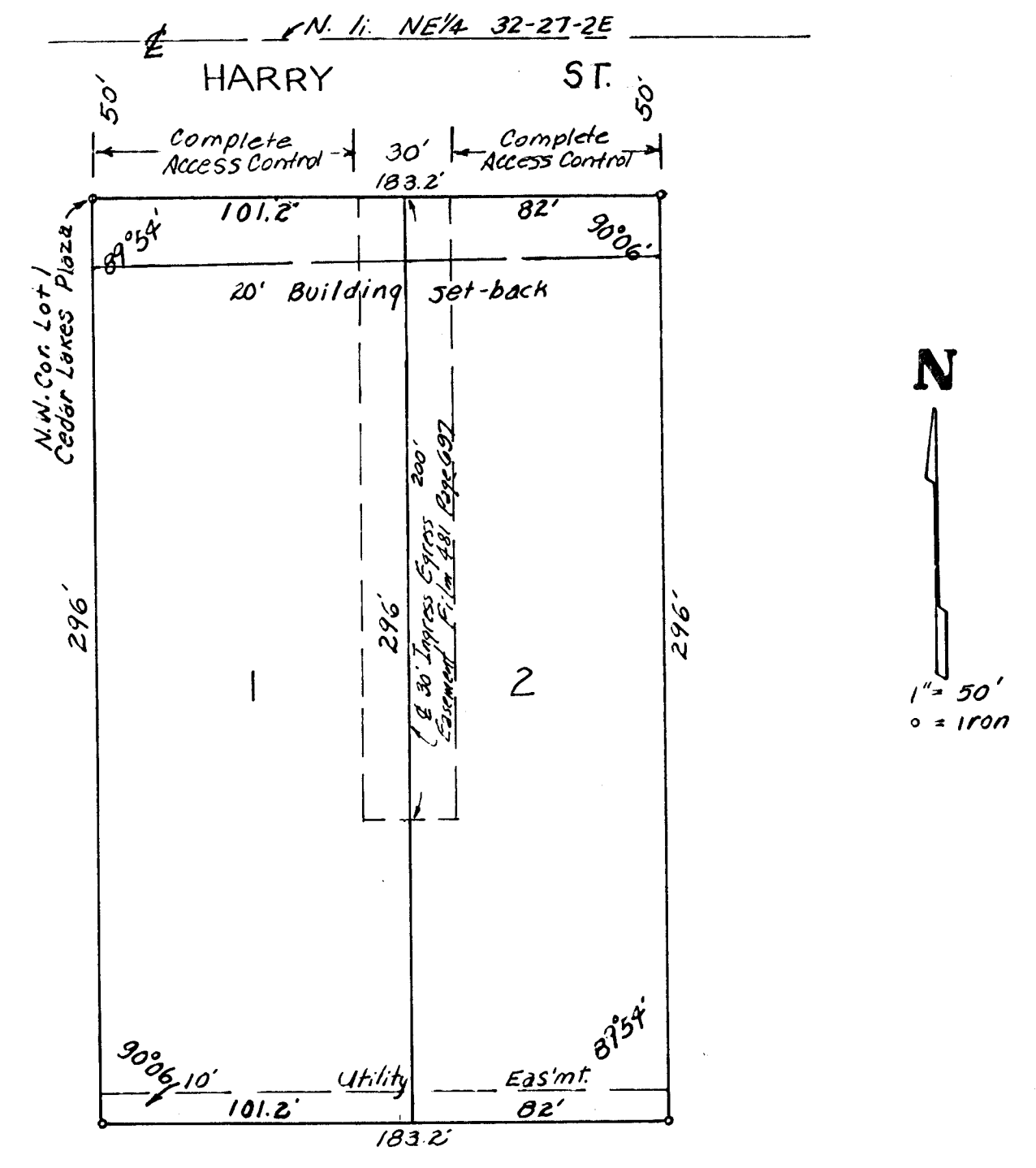


Caliendo 8th Addition

CALIENDO 8TH. ADDITION

WICHITA, KANSAS.



State of Kansas } s.s. We Daughman Company P.A., Surveyors Sedgwick County } do hereby certify that we in aforesaid county and state do hereby certify that we have surveyed and platted "CALIENDO 8TH ADDITION," Wichita, Kansas, and that the accompanying plat is a true and correct exhibit of the property surveyed described as and being a replat of Lot 1, except the East 183.2' thereof, Cedar Lakes Plaza, Wichita, Sedgwick County, Kansas, All being situated in the N.E. 1/4 of Sec. 32, Twp-27-S, R-2-E.

5/7/81
Date



Baughman Company P.A.
William L. Forber Surveyor
William L. Forber

Know all men by these presents that I, the undersigned, have caused the land described in the Surveyors certificate to be platted into a lot and street to be known as "CALIENDO 8TH ADDITION" Wichita, Kansas. The easement is hereby granted as indicated for the construction and maintenance of all public utilities. All abutters right of access to or from Harry St., over and across the west 85 feet of Lot 1 and over and across the east 67 feet of Lot 2 are hereby granted to the City of Wichita, Kansas.

Caliendo Investment Corporation

Richard Caliendo Vice-President
Richard Caliendo

This plat of "CALIENDO 8TH ADDITION," Wichita, Kansas, has been submitted to and approved by the Wichita-Sedgwick County Metropolitan Area Planning Commission Wichita, Kansas. Dated this 21st day of May 1981.

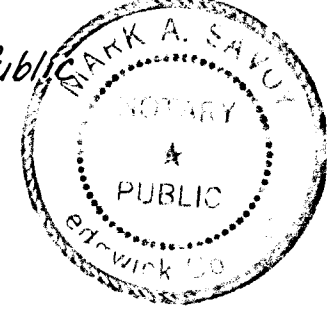
Wichita-Sedgwick County Metropolitan Area Planning Commission



Alvin J. Hennessy, Jr. Chairman
Alvin J. Hennessy, Jr.
Robert A. Lakin Secretary
Robert A. Lakin

State of Kansas } s.s. The foregoing instrument was acknowledged before me this 8th day of May 1981, by Richard Caliendo, President of Caliendo Investment Corporation.

Mark A. Savoy Notary Public
Mark A. Savoy



My App. Exp. 5/12/84

This plat approved and all dedications shown hereon accepted by the Board of Commissioners of the City of Wichita, Kansas, this 16th day of June 1981.

R. C. Brown Mayor
R. C. Brown
Donald C. Gisch City Clerk
Donald C. Gisch

Entered on transfer record this _____ day of _____ 1981.

Dorothy H. White
County Clerk

This plat approved and all dedications shown hereon accepted by the Board of Commissioners of Sedgwick County, Kansas, this _____ day of _____ 1981.

Donald E. Gragg
Chairman

Jack Spratt
Commissioner

Tom Scott
Commissioner

Dorothy H. White
County Clerk

State of Kansas } s.s. This is to certify that this plat was filed for record in the office of the Register of Deeds this _____ day of _____ 1981, at _____ o'clock _____ M; and is duly recorded.

Betty F. McCort
Register of Deeds

Pat Kettler
Deputy