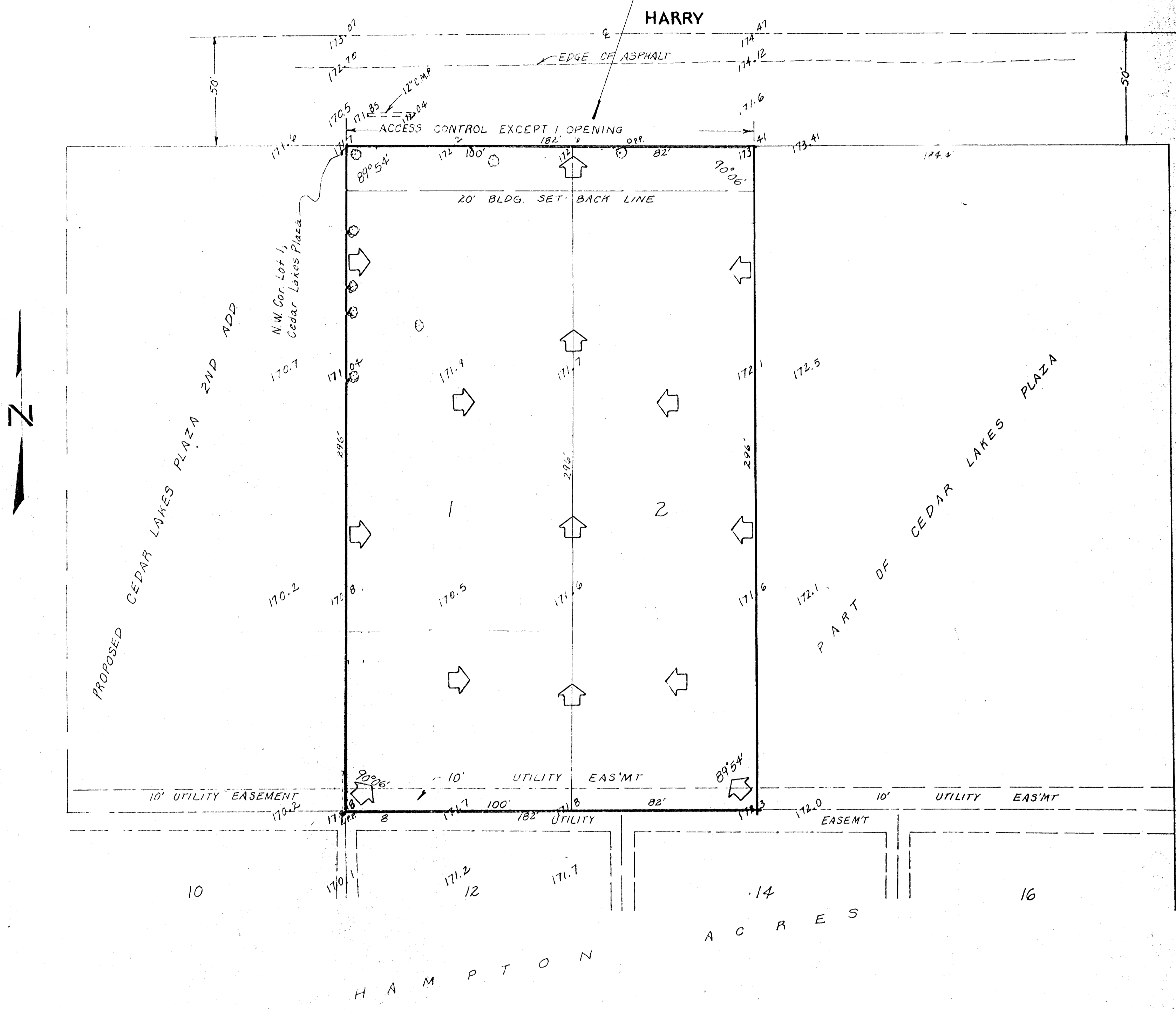


Coils to be drained via dr. approach.  
 Only 1 opening to be constructed.  
 Asphalt flumes to be constructed w.  
 Asph. temporary hookup.



DRAINAGE PLAN  
 CALIENDO 8TH ADD'N.

THE WEST 182 FEET OF LOT 1, CEDAR LAKES PLAZA,  
 WICHITA, SEDGWICK COUNTY, KANSAS

CALIENDO INV. CORP.  
 RICHARD CALIENDO, VICE-PRES.

1" = 30'  
 Elev. = City Datum

BENCH MARK  
 City Standard Disc, 48' S, & 46' W. of  
 E. Harry & Webb  
 Elev. = 172.033 City Datum