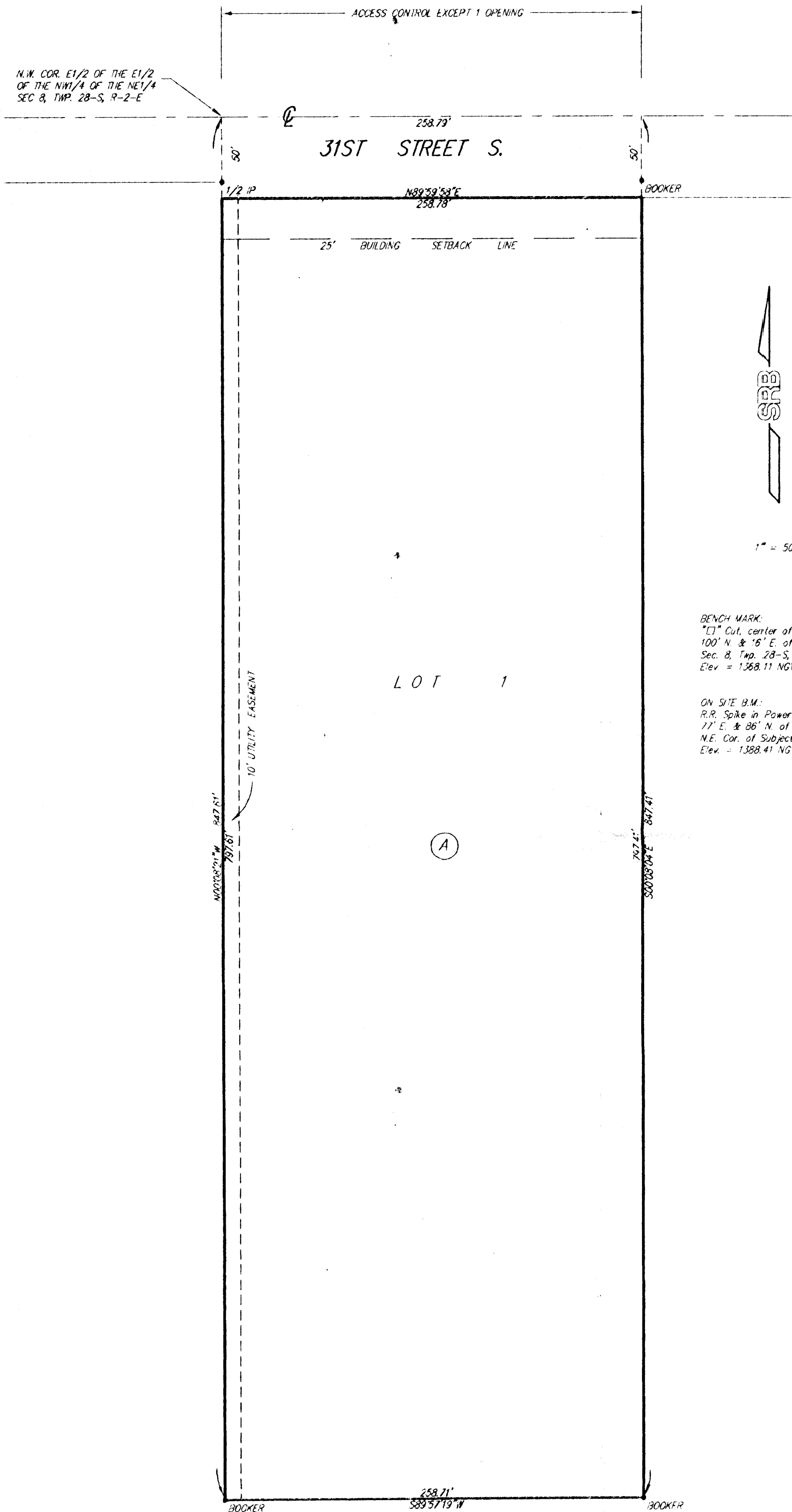


ARROWHEAD PLAINS

AN ADDITION TO SEDGWICK COUNTY, KANSAS



State of Kansas)
Sedgwick County) SS

We, Savoy, Ruggles & Bohm, P.A., Surveyors in aforesaid county and state do hereby certify that, under the supervision of the undersigned, we have surveyed and platted "ARROWHEAD PLAINS", Sedgwick County, Kansas and that the accompanying plat is a true and correct exhibit of the property surveyed, described as follows:

The North 847.80 feet of the West 258.80 feet of the E1/2 of the E1/2 of the NW1/4 of the NE1/4 of Sec. 8, Twp. 28-S, R-2-E of the 6th P.M., Sedgwick County, Kansas.

Savoy, Ruggles & Bohm, P.A.

Date _____

Mark A. Savoy RLS #788
Surveyor

Know all men by these presents that we, the undersigned, have caused the land described in the surveyors certificate to be platted into a Lot, a Block and Street, to be known as "ARROWHEAD PLAINS", Sedgwick County, Kansas. The Street is hereby dedicated to and for the use of the public. The utility easement is hereby granted as indicated for the construction and maintenance of all public utilities. All abutters rights of access to or from 31st Street South, over and across the north line of Lot 1 are hereby granted to the appropriate governing body, provided however that Lot 1, shall have access to 31st Street South at one location as shall be approved by the Engineer of the appropriate governing body.

Dean L. Bussart

Rebecca P. Bussart

Donald P. Olson

Donna Olson

State of Kansas)
Sedgwick County) SS

The foregoing instrument acknowledged before me, this _____ day of _____ 1996, by Dean L. Bussart and Rebecca P. Bussart, Husband and Wife.

Notary Public

My App't. Exp. _____

State of Kansas)
Sedgwick County) SS

The foregoing instrument acknowledged before me, this _____ day of _____ 1996, by Donald P. Olson and Donna Olson, Husband and Wife.

Notary Public

My App't. Exp. _____

This plat of "ARROWHEAD PLAINS", Sedgwick County, Kansas, has been submitted to and approved by the Wichita-Sedgwick County Metropolitan Area Planning Commission, Wichita, Kansas.
Dated this _____ day of _____ 1996.

Wichita-Sedgwick County Metropolitan Area Planning Commission

Susan Osborne-Howes
Chairman

Marvin S. Krout
Secretary

This plat approved and all dedications shown hereon, accepted by the City Council of the City of Wichita, Kansas, this _____ day of _____, 1996.

Bob Knight
Mayor

Pat Burnett
City Clerk

We, the undersigned, holders of a mortgage on the above described property do hereby consent to this plat of "ARROWHEAD PLAINS", Sedgwick County, Kansas.

Peoples Bank & Trust Company, McPherson

State of Kansas)
Sedgwick County) SS

The foregoing instrument acknowledged before me, this _____ day of _____ 1996, by _____ of Peoples Bank & Trust Company, McPherson, on behalf of the Bank.

Notary Public

My App't. Exp. _____

State of Kansas)
Sedgwick County) SS

This plat approved and all dedications shown hereon, are hereby accepted by the Board of County Commissioners, Sedgwick County, Kansas, on _____, 1996.

Thomas G. Winters
Chairman

Melody C. Miller
Chairman Pro-Tem

Mark F. Schroeder
Commissioner

Betsy Gwin
Commissioner

Paul W. Hancock
Commissioner

Susan E. Crockett-Spoon
County Clerk

Entered on transfer record this _____ day of _____, 1996.

Susan E. Crockett-Spoon
County Clerk

State of Kansas)
Sedgwick County) SS

This is to certify that this plat has been filed for record in the office of the Register of Deeds, this _____ day of _____ 1996, at _____ o'clock _____ M. and is duly recorded.

Pat Kettler
Register of Deeds

Ed Resa
Deputy

- BOOKER = 1/2" REBAR W/BOOKER CAP (FOUND)
- 1/2" IP = 1/2" IRON PIPE (FOUND)